



Glenville Grove, Deptford

Asking Price £700,000 Freehold

OLIVER *OJ* JAUQUES
EST.1986



Glenville Grove, Deptford

A beautifully presented family home enjoying a cleverly designed rear extension, with light thanks to a full glass southerly wall and two southerly skylights which floods the living space with natural light creating a contemporary, homely feel. To the first floor there are three well proportioned bedrooms and a family bathroom, which are complemented by a fourth double ensuite bedroom downstairs. The south facing garden is laid to brick paving with a lawned area to the rear. Ideal for the commuting family, as New Cross station with its London Overground Line and mainline services, is an easy 4 minute stroll away.

- Four Bedroomed Home
- Two bathrooms
- Flooded With natural Light
- Southerly Rear Garden
- Cul-de-Sac Location
- Off Street Allocated Parking

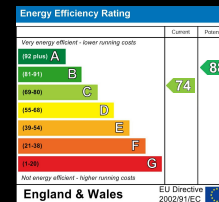
Oliver Jaques Surrey Quays Sales
0207 231 5050

Email southeast@o-j.co.uk

229/331 Lower Road, Surrey Quay, London, SE16 2LW

web <https://www.o-j.co.uk>

Every care has been taken with the preparation of this brochure but it is for general guidance only and complete accuracy cannot be guaranteed. If there is any point, which is of importance professional verification should be sought. This brochure does not constitute a contract or part of a contract. We are not qualified to verify tenure of property. Prospective purchasers should seek clarification from their solicitor or verify the tenure of this property for themselves by visiting www.gov.uk/government/organisations/land-registry. The mention of any appliances, fixtures or fittings does not imply they are in full working order. Photographs are reproduced for general information and it cannot be inferred that any item shown is included in the sale. All dimensions are approximate. Walking times are taken from Google Maps and measured from the centre of the postcode, which may differ from the individual property. We routinely refer clients to Chancery Mortgage Services Ltd. It is your decision whether you choose to deal with Chancery Mortgage Services Ltd. In making that decision, you should know that we receive an annual payment benefits from Chancery Mortgage Services Ltd, equating to approximately £220 per referral



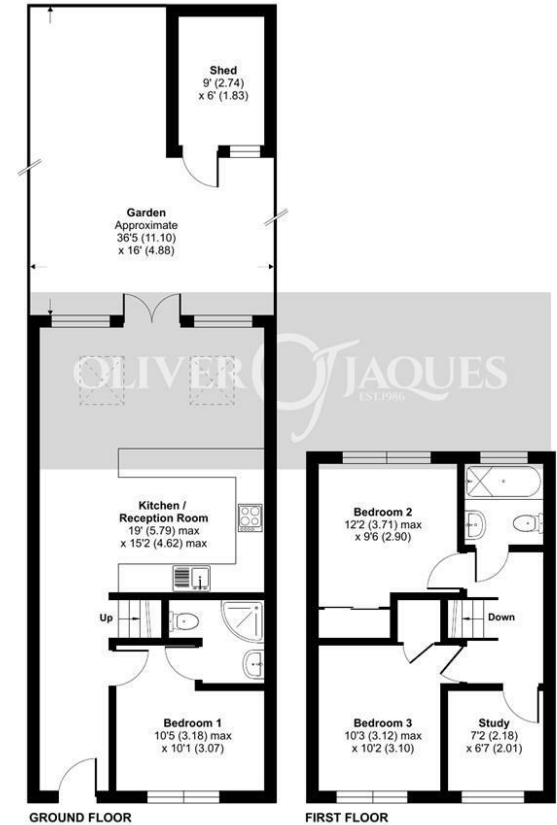
Glenville Grove, London, SE8

Approximate Area = 864 sq ft / 80.2 sq m

Outbuilding = 54 sq ft / 5 sq m

Total = 918 sq ft / 85.2 sq m

For identification only - Not to scale



Floor plan produced in accordance with RICS Property Measurement Standards incorporating International Property Measurement Standards (IPMS2 Residential). © rnhcom 2024. Produced for Oliver Jaques. REF: 1144649

Tenure: Freehold

Ground Rent: N/A

Service Charge: N/A

Lease Expires: N/A

Shared Ownership: No

Council Tax Band: Lewisham London Borough Council (Band D)

£2,037.98