



Ahn Moss Way, Canada Water

£1,900 PGM Calendar Month

OLIVER  JAQUES  
EST. 1986



## Ann Moss Way, Canada Water SE16

Situated conveniently for the transport links and amenities of Canada Water, Rotherhithe, and Surrey Quays, this well presented two bedroom apartment on popular Ann Moss Way is available for occupation from early June, on a furnished basis. Boasting double glazing throughout, and benefiting from an integrated kitchen, spacious lounge diner with laminate floor, two equal sized double bedrooms and a further modern three piece bathroom suite with shower.

- Two Bedroom Apartment
- Ample Storage
- Council Tax Band B
- Close to Canada Water Station
- Double Glazed
- EPC Rating C
- £2,192 Deposit Amount

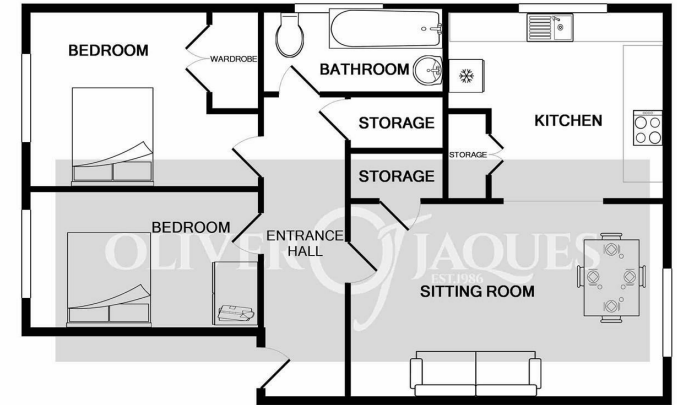
Oliver Jaques Surrey Quays Lettings  
020 7231 5050

Email [southeast@o-j.co.uk](mailto:southeast@o-j.co.uk)

229/231 Lower Road, Surrey Quays, London, SE16 2LW

web <https://www.o-j.co.uk>

Every care has been taken with the preparation of this brochure but it is for general guidance only and complete accuracy cannot be guaranteed. If there is any point, which is of importance professional verification should be sought. This brochure does not constitute a contract or part of a contract. We are not qualified to verify tenure of property. Prospective purchasers should seek clarification from their solicitor or verify the tenure of this property for themselves by visiting [www.gov.uk/government/organisations/land-registry](http://www.gov.uk/government/organisations/land-registry). The mention of any appliances, fixtures or fittings does not imply they are in full working order. Photographs are reproduced for general information and it cannot be inferred that any item shown is included in the sale. All dimensions are approximate. Walking times are taken from Google Maps and measured from the centre of the postcode, which may differ from the individual property. We always refer prospective buyers to our panelled conveyancers and Chancery Mortgage Services Ltd. It is your decision whether to use them. Should you decide to do so you should know that we could receive a referral fee from them for recommending them to you.



TOTAL APPROX. FLOOR AREA 706 SQ.FT. (65.6 SQ.M.)

Whilst every attempt has been made to ensure the accuracy of the floor plan contained here, measurements of doors, windows, rooms and any other items are approximate and no responsibility is taken for any error, omission, or mis-statement. This plan is for illustrative purposes only and should be used as such by any prospective purchaser. The services, systems and appliances shown have not been tested and no guarantee as to their operability or efficiency can be given.  
Made with Metropix ©2018

