



Baltic Quay, Surrey Quays

Asking Price £535,000 Leasehold - Share of Freehold

OLIVER *OJ* JAQUES
EST.1986



Baltic Quay, Surrey Quays

At 99.4sqm (1,070sqft), this three bedroomed apartment forming part of the landmark Baltic Quay development, enjoys spacious accommodation in one of Surrey Quays' premier addresses. Baltic Quay was one of the area's first major Dockland developments and enjoys a 24 hour concierge service and secure underground parking with serviced lifts giving access direct from the carpark. The building had undergone a £500,000 programme of works to cement its position at the top of the local property market. This unit, located on the raised first floor, is presented in good order throughout and benefits from two bathrooms, wooden flooring throughout and a fully integrated modern kitchen.

- Three Double Bedrooms
- Contemporary Fixtures Throughout
- Secure Allocated parking
- Two bathrooms
- 24hr Concierge Service
- 99.4sqm (1,070sqft)

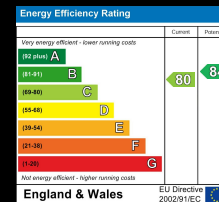
Oliver Jaques Surrey Quays Sales
0207 231 5050

Email southeast@o-j.co.uk

229/331 Lower Road, Surrey Quay, London, SE16 2LW

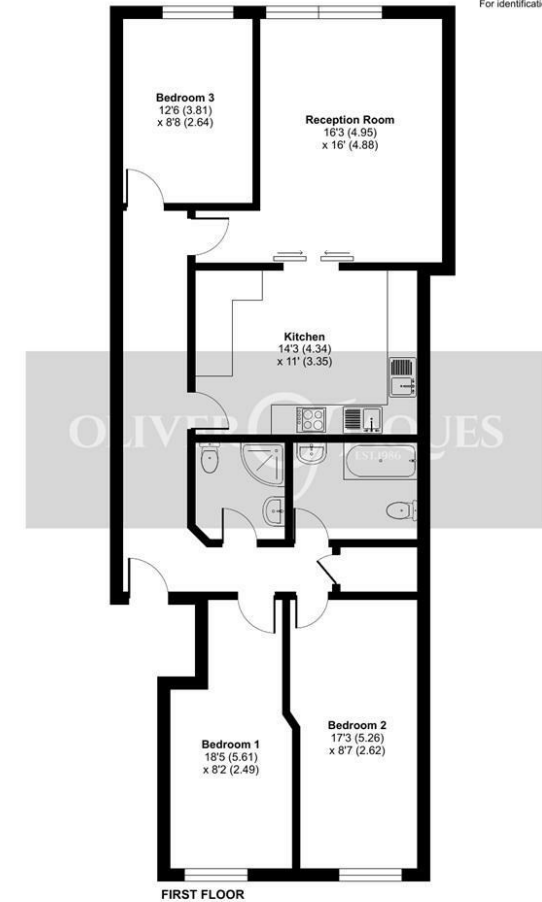
web <https://www.o-j.co.uk>

Every care has been taken with the preparation of this brochure but it is for general guidance only and complete accuracy cannot be guaranteed. If there is any point, which is of importance professional verification should be sought. This brochure does not constitute a contact or part of a contract. We are not qualified to verify tenure of property. Prospective purchasers should seek clarification from their solicitor or verify the tenure of this property for themselves by visiting www.gov.uk/government/organisations/land-registry. The mention of any appliances, fixtures or fittings does not imply they are in full working order. Photographs are reproduced for general information and it cannot be inferred that any item shown is included in the sale. All dimensions are approximate. Walking times are taken from Google Maps and measured from the centre of the postcode, which may differ from the individual property. We routinely refer clients to Chancery Mortgage Services Ltd. It is your decision whether you choose to deal with Chancery Mortgage Services Ltd. In making that decision, you should know that we receive an annual payment benefits from Chancery Mortgage Services Ltd, equating to approximately £220 per referral



Sweden Gate, London, SE16

Approximate Area = 1070 sq ft / 99.4 sq m
For identification only - Not to scale



Floor plan produced in accordance with RICS Property Measurement Standards incorporating International Property Measurement Standards (IPMS2 Residential). © rnhccom 2024. Produced for Oliver Jaques. REF: 1102064

Tenure: Leasehold - Share of Freehold

Ground Rent: n/a

Service Charge: £7,614.70 pa

(Inc Reserve Fund)

Lease Expires: 12th February 2186

Shared Ownership: No

Council Tax Band: Southwark London

Borough Council (Band F)

£2,589.86 pa