



Rainbow Quay, Surrey Quays

Asking Price £380,000 Leasehold

OLIVER  JAUQUES
EST. 1986



Rainbow Quay, Surrey Quays

Nestled between Surrey Quays' two scenic docks, this immaculately kept, quayside apartment feels a world away from its convenient location near the Thames. The property benefits from floor-to-ceiling windows and Juliette balconies to both the reception room and bedroom which offer views directly over Greenland Dock. Rainbow Quay further enjoys secure underground parking, impeccably maintained communal gardens and an active residents' association. Moments from the Thames Clipper service - offering commuter riverboat services to Canary Wharf and beyond - and within walking distance of both Surrey Quays and Canada Water underground stations.

- Second Floor Apartment
- Juliette Balconies
- Well-Kept Communal Gardens
- Direct Views Over Docks
- Secure Allocated Parking
- Quiet Residential Location

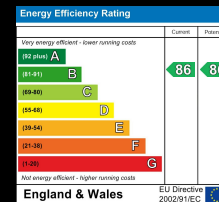
Oliver Jaques Surrey Quays Sales
0207 231 5050

Email southeast@o-j.co.uk

229/331 Lower Road, Surrey Quay, London, SE16 2LW

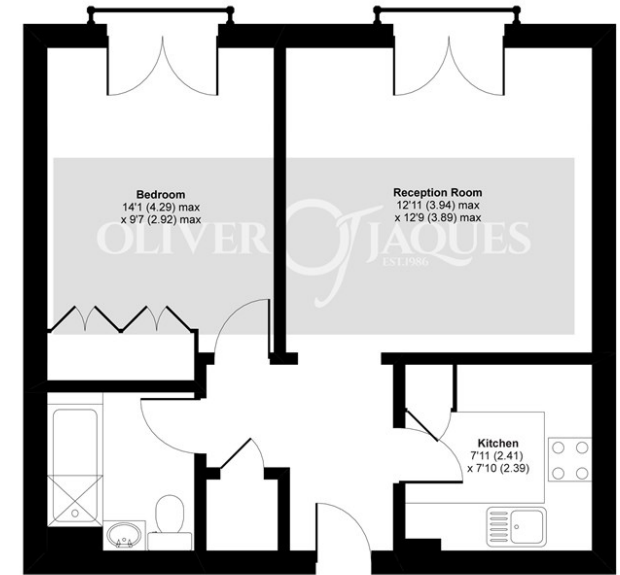
web <https://www.o-j.co.uk>

Every care has been taken with the preparation of this brochure but it is for general guidance only and complete accuracy cannot be guaranteed. If there is any point, which is of importance professional verification should be sought. This brochure does not constitute a contract or part of a contract. We are not qualified to verify tenure of property. Prospective purchasers should seek clarification from their solicitor or verify the tenure of this property for themselves by visiting www.gov.uk/government/organisations/land-registry. The mention of any appliances, fixtures or fittings does not imply they are in full working order. Photographs are reproduced for general information and it cannot be inferred that any item shown is included in the sale. All dimensions are approximate. Walking times are taken from Google Maps and measured from the centre of the postcode, which may differ from the individual property. We routinely refer clients to Chancery Mortgage Services Ltd. It is your decision whether you choose to deal with Chancery Mortgage Services Ltd. In making that decision, you should know that we receive an annual payment benefits from Chancery Mortgage Services Ltd, equating to approximately £220 per referral



Rainbow Quay, London, SE16

APPROX. GROSS INTERNAL FLOOR AREA 483 SQ FT 44.8 SQ METRES



SECOND FLOOR

Whilst every attempt has been made to ensure the accuracy of the floor plan contained here, measurements of doors, windows and rooms are approximate and no responsibility is taken for any error, omission or misstatement. These plans are for representation purposes only as defined by RICS Code of Measuring Practice and should be used as such by any prospective purchaser. Specifically no guarantee is given on the total square footage of the property if quoted on this plan. Any figure given is for initial guidance only and should not be relied on as a basis of valuation.

Copyright nichecom.co.uk 2019 Produced for Oliver Jaques REF : 522690

Tenure: Leasehold

Ground Rent: £232 pa

Service Charge: £2,170 pa

Lease Expires: 31st December 2122

Shared Ownership: No

Council Tax Band: Southwark London Borough Council (Band D)

£1,792.98