



Nyland Court, Naomi Street

Guide Price £425,000 Leasehold





Nyland Court, Naomi Street

A fifth-floor apartment within Barratt's popular Greenland Place development, accessed via the concierge entrance, providing enhanced security and convenience. The apartment boasts a spacious private west-facing balcony. Inside, it offers open-plan living with floor-to-ceiling windows, spanning 51.3sqm (552sqft). The generous bedroom also features floor-to-ceiling windows with built-in wardrobes. Greenland Place is becoming a sought-after neighbourhood with its array of high-end amenities onsite, including delis, bars, salons, and supermarkets.

- West Facing Balcony With City Views
- Open Plan Living Areas
- Private Communal Garden
- 24hr Concierge & Residents' Gym
- One Double Bedroom
- Fifth Floor Apartment

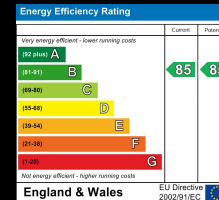
Oliver Jaques Surrey Quays Sales
0207 231 5050

Email southeast@o-j.co.uk

229/331 Lower Road, Surrey Quay, London, SE16 2LW

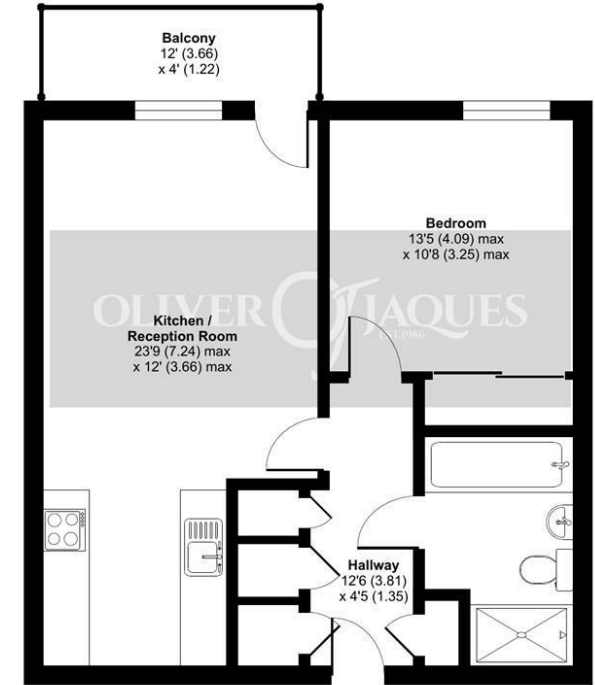
web <https://www.o-j.co.uk>

Every care has been taken with the preparation of this brochure but it is for general guidance only and complete accuracy cannot be guaranteed. If there is any point, which is of importance professional verification should be sought. This brochure does not constitute a contract or part of a contract. We are not qualified to verify tenure of property. Prospective purchasers should seek clarification from their solicitor or verify the tenure of this property for themselves by visiting www.gov.uk/government/organisations/land-registry. The mention of any appliances, fixtures or fittings does not imply they are in full working order. Photographs are reproduced for general information and it cannot be inferred that any item shown is included in the sale. All dimensions are approximate. Walking times are taken from Google Maps and measured from the centre of the postcode, which may differ from the individual property. We routinely refer clients to Chancery Mortgage Services Ltd. It is your decision whether you choose to deal with Chancery Mortgage Services Ltd. In making that decision, you should know that we receive an annual payment benefits from Chancery Mortgage Services Ltd, equating to approximately £220 per referral



Naomi Street, SE8

Approximate Area = 552 sq ft / 51.3 sq m
For identification only - Not to scale



FIFTH FLOOR



Floor plan produced in accordance with RICS Property Measurement Standards incorporating International Property Measurement Standards (IPMS2 Residential). © rnhccom 2024. Produced for Oliver Jaques. REF: 1097631

Tenure: Leasehold

Ground Rent: £437.66 pa

10yr RPI Reviews

Service Charge: £2,451 pa

Lease Expires: 21st December 3011

Shared Ownership: No

Council Tax Band: London Borough of Lewisham (Band B) £1,585.09 pa