



Hithe Grove, Canada Water

Offers In Excess Of £475,000 Leasehold

OLIVER  JAUQUES
EST.1986



Hithe Grove, Canada Water

Directly opposite the wide open space of Southwark Park and benefiting from an enviable position just 0.3 miles from Canada Water Station, and 0.1 miles from Surrey Quays Station this apartment offers conveniently located accommodation in a gated development, with an allocated parking space. The property benefits from gas fired central heating and is fully double glazed. Externally it benefits from a paved frontage facing west over the scenic Southwark Park and a terrace to the rear with space for outdoor dining. The kitchen offers an island, gas hob with extractor and integrated units. At 692sqft, this property makes for a great first buy and home for years to come.

- Two Double Bedrooms
- Secure Cycle Storage
- 0.3 Miles to Canada Water Station
- Primary bedroom en Suite
- Securely Gated development
- 0.1 Miles to Surrey Quays Station

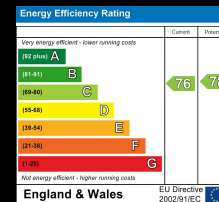
Oliver Jaques Surrey Quays Sales
0207 231 5050

Email southeast@o-j.co.uk

229/331 Lower Road, Surrey Quay, London, SE16 2LW

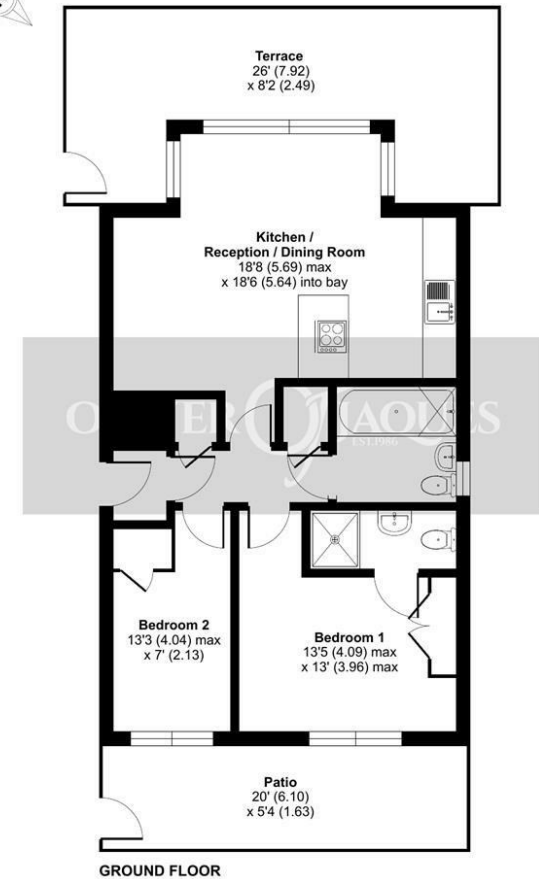
web <https://www.o-j.co.uk>

Every care has been taken with the preparation of this brochure but it is for general guidance only and complete accuracy cannot be guaranteed. If there is any point, which is of importance professional verification should be sought. This brochure does not constitute a contract or part of a contract. We are not qualified to verify tenure of property. Prospective purchasers should seek clarification from their solicitor or verify the tenure of this property for themselves by visiting www.gov.uk/government/organisations/land-registry. The mention of any appliances, fixtures or fittings does not imply they are in full working order. Photographs are reproduced for general information and it cannot be inferred that any item shown is included in the sale. All dimensions are approximate. Walking times are taken from Google Maps and measured from the centre of the postcode, which may differ from the individual property. We routinely refer clients to Chancery Mortgage Services Ltd. It is your decision whether you choose to deal with Chancery Mortgage Services Ltd. In making that decision, you should know that we receive an annual payment benefits from Chancery Mortgage Services Ltd, equating to approximately £220 per referral



Hithe Grove, London, SE16

Approximate Area = 692 sq ft / 64.3 sq m
For identification only - Not to scale



Floor plan produced in accordance with RICS Property Measurement Standards incorporating International Property Measurement Standards (IPMS2 Residential). © rnhccom 2023. Produced for Oliver Jaques. REF: 1077786

Tenure: Leasehold
Ground Rent: TBC
Service Charge: TBC
Lease Expires: TBC
Shared Ownership: No
Council Tax Band: (Band)
 £TBC