



Naomi Street, Surrey Quays

£550,000 Leasehold

OLIVER  JAUQUES
EST.1986



Naomi Street, Surrey Quays

A First-Floor two bedroom, two bathroom apartment, forming part of Barratt's popular Greenland Place development. Spanning 827sqft / 76.8sqm, the property represents one of the larger two bed units in the development and enjoys, in addition, a sizeable balcony to enjoy the outside space. The combined developments of Greenland Place and Marine Wharf have almost become a neighbourhood in their own right with the inclusion, on site, of Tesco & Co-Op supermarkets, Delis, Cafés, Salons and Bistros. This property further benefits from a 24hr concierge service and residents' gym. Moments from Greenland Surrey Quays Pier and the banks of the Thames, this property makes a great home in a rapidly appreciating corner of Surrey Quays.

- Two Double Bedrooms
- Two Bathrooms
- Gym Facilities & 24 Hr Concierge
- Private Balcony
- Allocated Parking Space
- Private Communal Garden

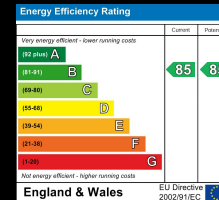
Oliver Jaques Surrey Quays Sales
0207 231 5050

Email southeast@o-j.co.uk

229/331 Lower Road, Surrey Quay, London, SE16 2LW

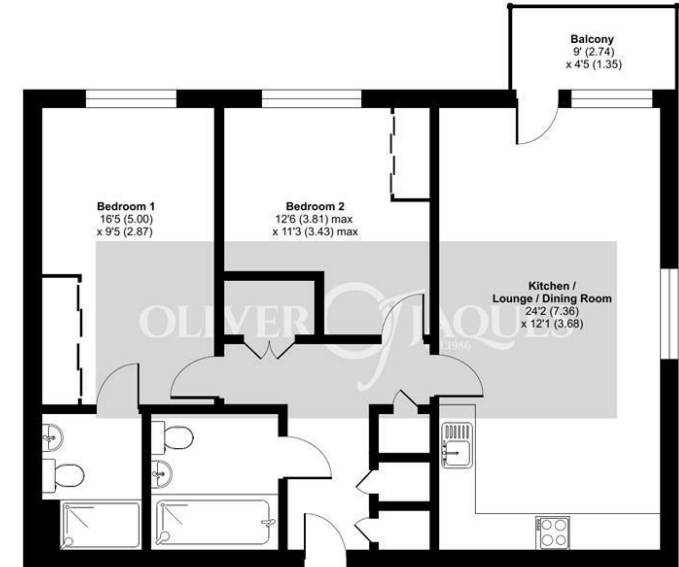
web <https://www.o-j.co.uk>

Every care has been taken with the preparation of this brochure but it is for general guidance only and complete accuracy cannot be guaranteed. If there is any point, which is of importance professional verification should be sought. This brochure does not constitute a contact or part of a contract. We are not qualified to verify tenure of property. Prospective purchasers should seek clarification from their solicitor or verify the tenure of this property for themselves by visiting www.gov.uk/government/organisations/land-registry. The mention of any appliances, fixtures or fittings does not imply they are in full working order. Photographs are reproduced for general information and it cannot be inferred that any item shown is included in the sale. All dimensions are approximate. Walking times are taken from Google Maps and measured from the centre of the postcode, which may differ from the individual property. We routinely refer clients to Chancery Mortgage Services Ltd. It is your decision whether you choose to deal with Chancery Mortgage Services Ltd. In making that decision, you should know that we receive an annual payment benefits from Chancery Mortgage Services Ltd, equating to approximately £220 per referral



Nyland Court, Naomi Street, London, SE8

Approximate Area = 827 sq ft / 76.8 sq m
For identification only - Not to scale



FIRST FLOOR

RICS Certified Property Measurer Floor plan produced in accordance with RICS Property Measurement Standards incorporating International Property Measurement Standards (IPMS2 Residential). © richecom 2023. Produced for Oliver Jaques. REF: 1075348

Tenure: Leasehold

Ground Rent: £500 pa

Service Charge: £3,700 pa

Lease Expires: 3011

Shared Ownership: No

Council Tax Band: Lewisham London

Borough (Band C)

£1,712.24