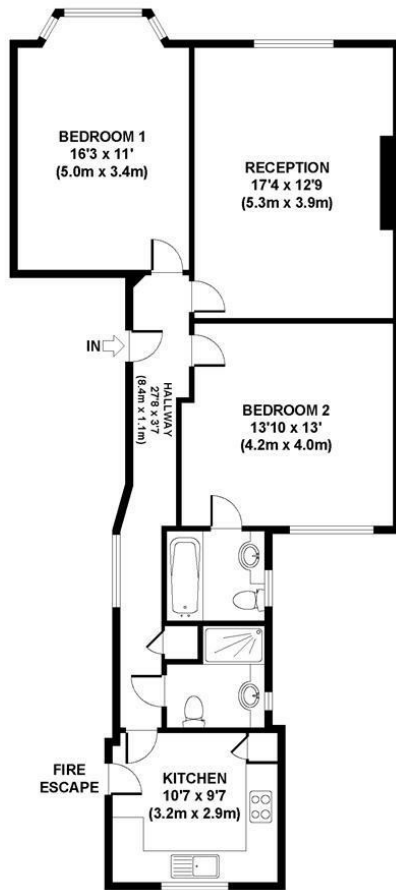




hausman
& holmes

Queens Mansions, Watford Way, NW4
Asking Price £475,000



GROUND FLOOR
 GROSS INTERNAL
 FLOOR AREA 855 SQ FT

APPROX. GROSS INTERNAL FLOOR AREA 855 SQ FT / 80 SQ M
 Floorplans are for identification and guideline purposes only, not to scale.
 Compliant with RICS code of measuring practice.
 Floorplans supplied by www.draftingfloorplan.com



- Two bedrooms
- Ideal for investors/first time buyers
- Purpose built mansion block
- Two bathrooms
- Close to Hendon Central
- Spacious & well planned

Energy Efficiency Rating		Current	Potential
Very energy efficient - lower running costs			
(92 plus) A			
(81-91) B			
(69-80) C			
(55-68) D			
(39-54) E			
(21-38) F			
(1-20) G			
Not energy efficient - higher running costs			
England & Wales		EU Directive 2002/91/EC	

Compliant with RICS code of measuring practice, Particulars and floor plans are only a guide to the property and do not constitute or form part of any offer or contract and are not to be regarded as representation of fact. Any intending purchaser must satisfy themselves as to the accuracy of these particulars as they are given without responsibility. No person in the employment of Hausman and Holmes has any authority to make or give representation or warranty to properties being sold.