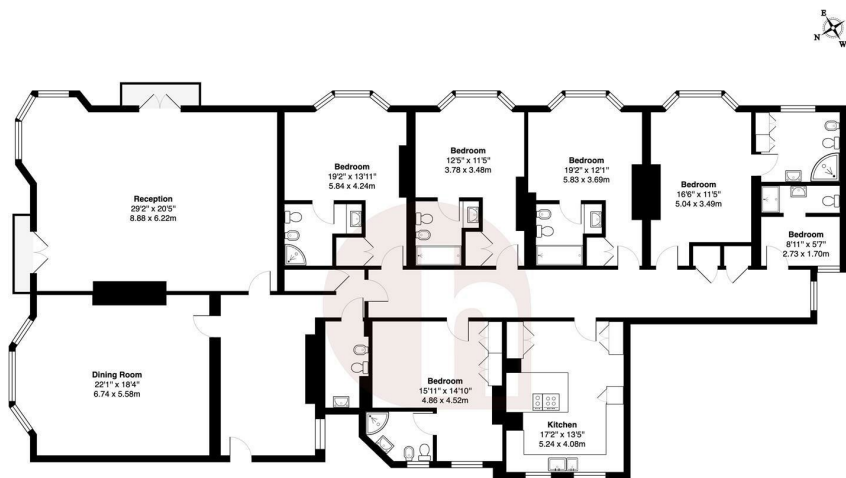




hausman
& holmes

Cumberland House, Kensington Road, W8
Asking Price £6,500,000

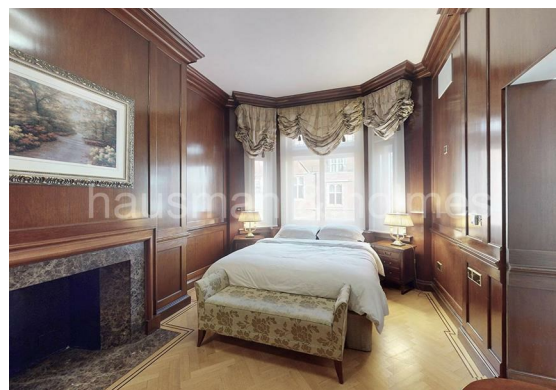


2nd Floor

Cumberland House, Kensington Road W8

Total Gross Area: 3273 sq. ft. / 304.1 m²

All measurements are approximate and for identification purposes only, not to scale.
Compliant with the RICS code of measuring practice



- Day Porter
- Overlooking Kensington Gardens
- 3273 sq. ft.

- Bright & Generous living space
- Grand Entrance Hall
- Period building



020 8458 8555

57 Golders Green Road

London NW11

info@hausmanandholmes.com

Energy Efficiency Rating		
Very energy efficient - lower running costs	Current	Potential
(92 plus) A		84
(81-91) B		
(69-80) C		
(55-68) D		
(39-54) E		
(21-38) F		
(1-20) G		
Not energy efficient - higher running costs		
England & Wales	EU Directive 2002/91/EC	

Compliant with RICS code of measuring practice, Particulars and floor plans are only a guide to the property and do not constitute or form part of any offer or contract and are not to be regarded as representation of fact. Any intending purchaser must satisfy themselves as to the accuracy of these particulars as they are given without responsibility. No person in the employment of Hausman and Holmes has any authority to make or give representation or warranty to properties being sold.