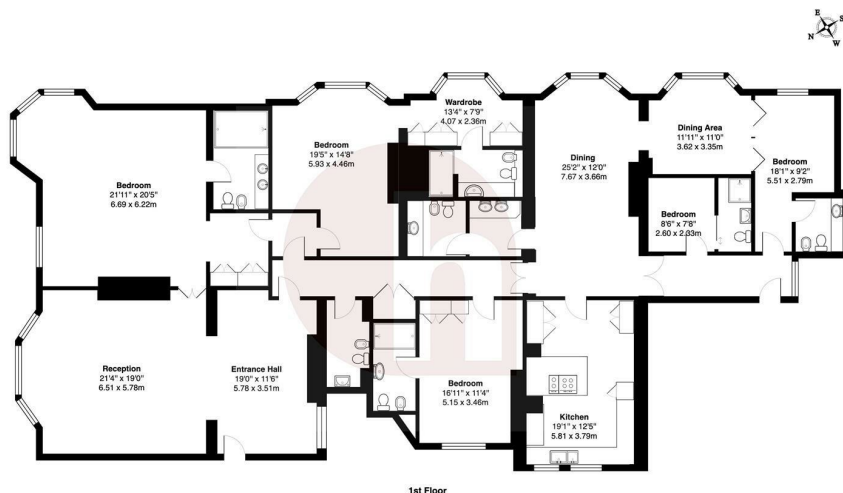




hausman
& holmes

Cumberland House, Kensington Road, W8
Asking Price £6,500,000

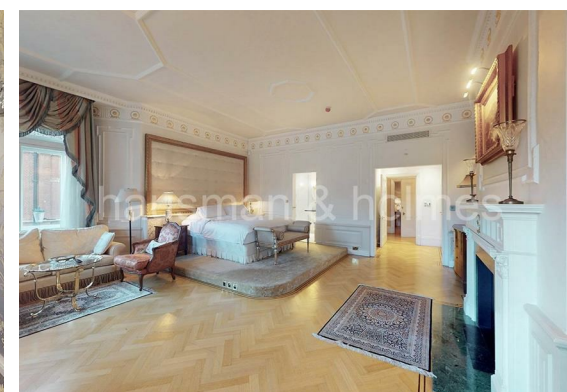




Cumberland House, Kensington Road W8

Total Gross Area: 3325 sq. ft. ... 308.9 m²

All measurements are approximate and for identification purposes only, not to scale.
Compliant with the RICS code of measuring practice



- Day Porter
- Overlooking Kensington Gardens
- 3325 sq. ft.

- Bright & Generous living space
- Grand Entrance Hall
- Period building

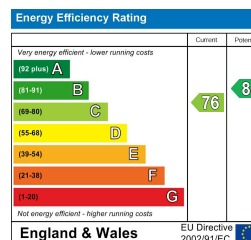


020 8458 8555

57 Golders Green Road

London NW11

info@hausmanandholmes.com



Compliant with RICS code of measuring practice, Particulars and floor plans are only a guide to the property and do not constitute or form part of any offer or contract and are not to be regarded as representation of fact. Any intending purchaser must satisfy themselves as to the accuracy of these particulars as they are given without responsibility. No person in the employment of Hausman and Holmes has any authority to make or give representation or warranty to properties being sold.