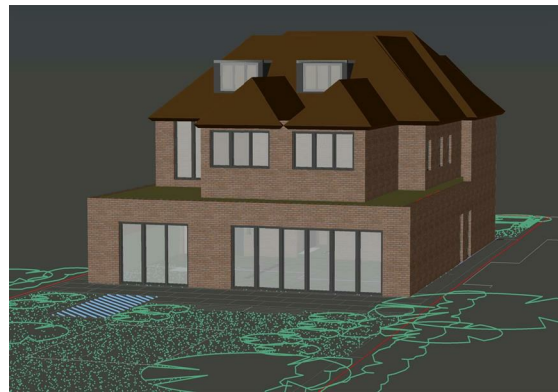
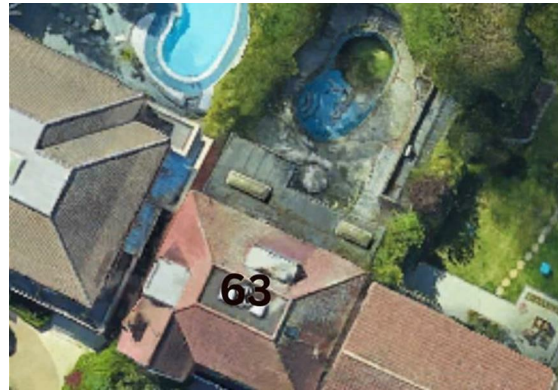
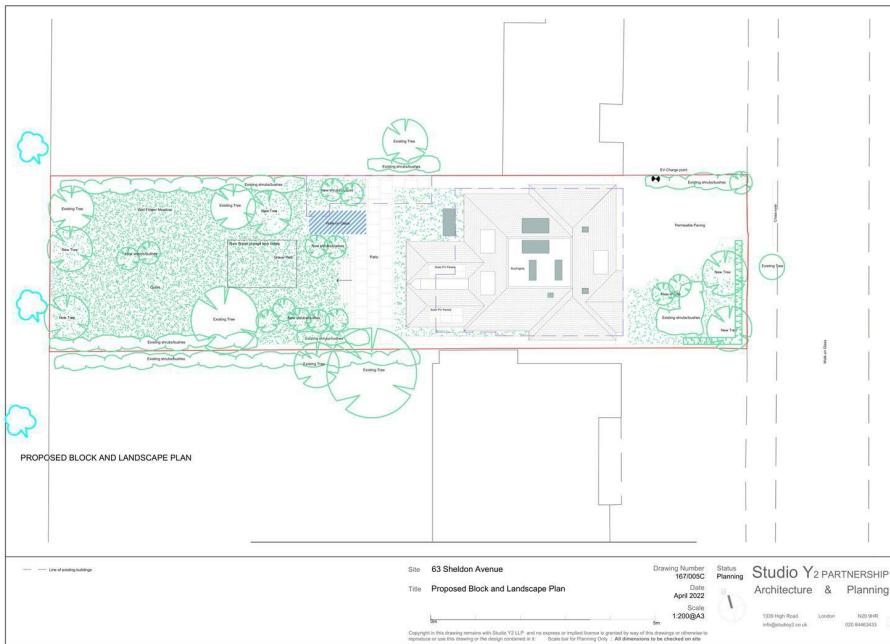




hausman  
& holmes

Sheldon Avenue, N6

Asking Price £5,750,000



- Development Opportunity
- Premier road & Location

- Superb family home
- Backing onto the golf course

**hausman & holmes** 020 8458 8555  
 57 Golders Green Road  
 London NW11  
 info@hausmanandholmes.com

Energy Efficiency Rating		Current	Potential
Very energy efficient - lower running costs			
(92 plus)	A		
(81-91)	B		
(69-80)	C		
(55-68)	D		
(39-54)	E		
(21-38)	F		
(1-20)	G		
Not energy efficient - higher running costs			
England & Wales		EU Directive 2002/91/EC	

Compliant with RICS code of measuring practice, Particulars and floor plans are only a guide to the property and do not constitute or form part of any offer or contract and are not to be regarded as representation or fact. Any intending purchaser must satisfy themselves as to the accuracy of these particulars as they are given without responsibility. No person in the employment of Hausman and Holmes has any authority to make or give representation or warranty to properties being sold.