

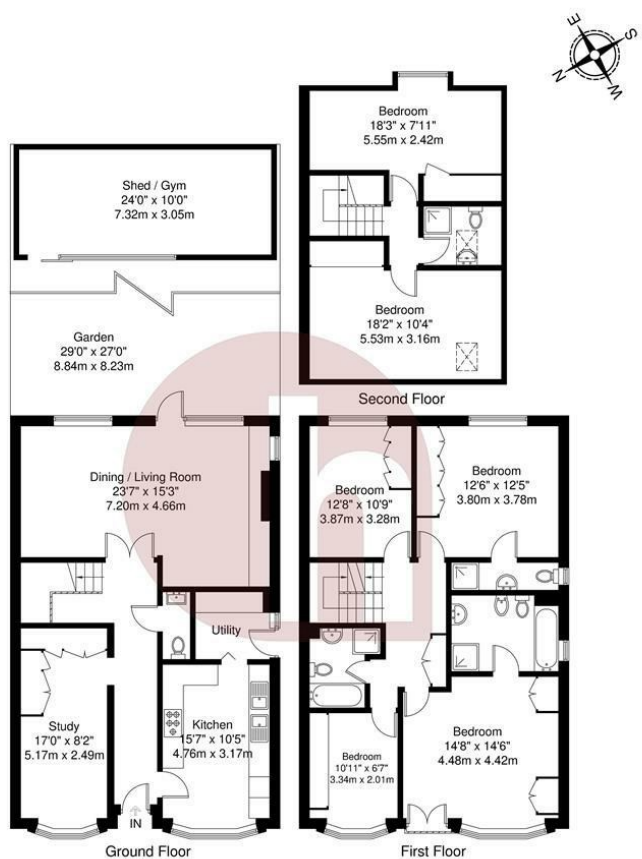


hausman  
& holmes

Sinclair Grove, NW11

Asking Price £1,450,000





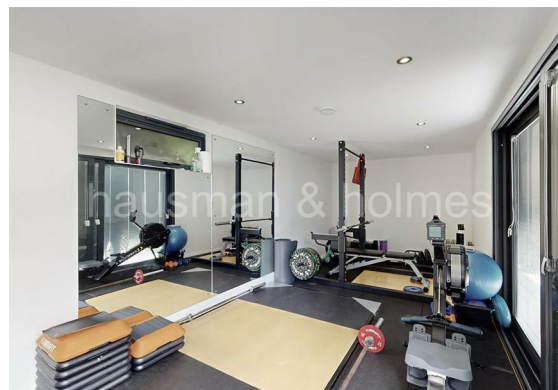
Sinclair Grove, NW11 9JH

Total Gross Internal Area = 211.8 sq m / 2279 sq ft

Shed / Gym = 22.2 sq m / 238 sq ft

Total = 234 sq m / 2517 sq ft

All Measurements are approximate and for identification guideline purposes only, not to scale.  
Compliant with the RICS code of measuring practice



- Semi-detached family home
- 2517 sq. ft
- Off street parking for 2 cars

- 6 bedrooms and 4 bathrooms
- 3 reception rooms



020 8458 8555

57 Golders Green Road

London NW11

info@hausmanandholmes.com

Energy Efficiency Rating		Current	Potential
Very energy efficient - lower running costs			
(92 plus) A			
(81-91) B			
(69-80) C			
(55-68) D			
(39-54) E			
(21-38) F			
(1-20) G			
Not energy efficient - higher running costs			
England & Wales		73	81
EU Directive 2002/91/EC			

Compliant with RICS code of measuring practice, Particulars and floor plans are only a guide to the property and do not constitute or form part of any offer or contract and are not to be regarded as representation of fact. Any intending purchaser must satisfy themselves as to the accuracy of these particulars as they are given without responsibility. No person in the employment of Hausman and Holmes has any authority to make or give representation or warranty to properties being sold.