

FELBRIDGE AVENUE, STANMORE



Four Bedroom Semi Detached House

Guide Price £635,000

Description

A chain free, four bedroom, two bathroom semi-detached house with a front lounge, kitchen / diner, covered terrace, detached garage, three bedrooms and bathroom on the first floor and further bedroom with en-suite shower room within the loft conversion. Externally, the property has off street parking to the front of the house, shared drive leading to the detached garage and a 70ft rear garden (approx).





- *Four bedroom semi detached house*
- *Off street parking and detached garage*
- *Loft conversion providing bedroom with en-suite shower room*
- *Close to facilities at Belmont Circle*
- *Gas central heating and double glazed windows*
- *No Upper Chain*

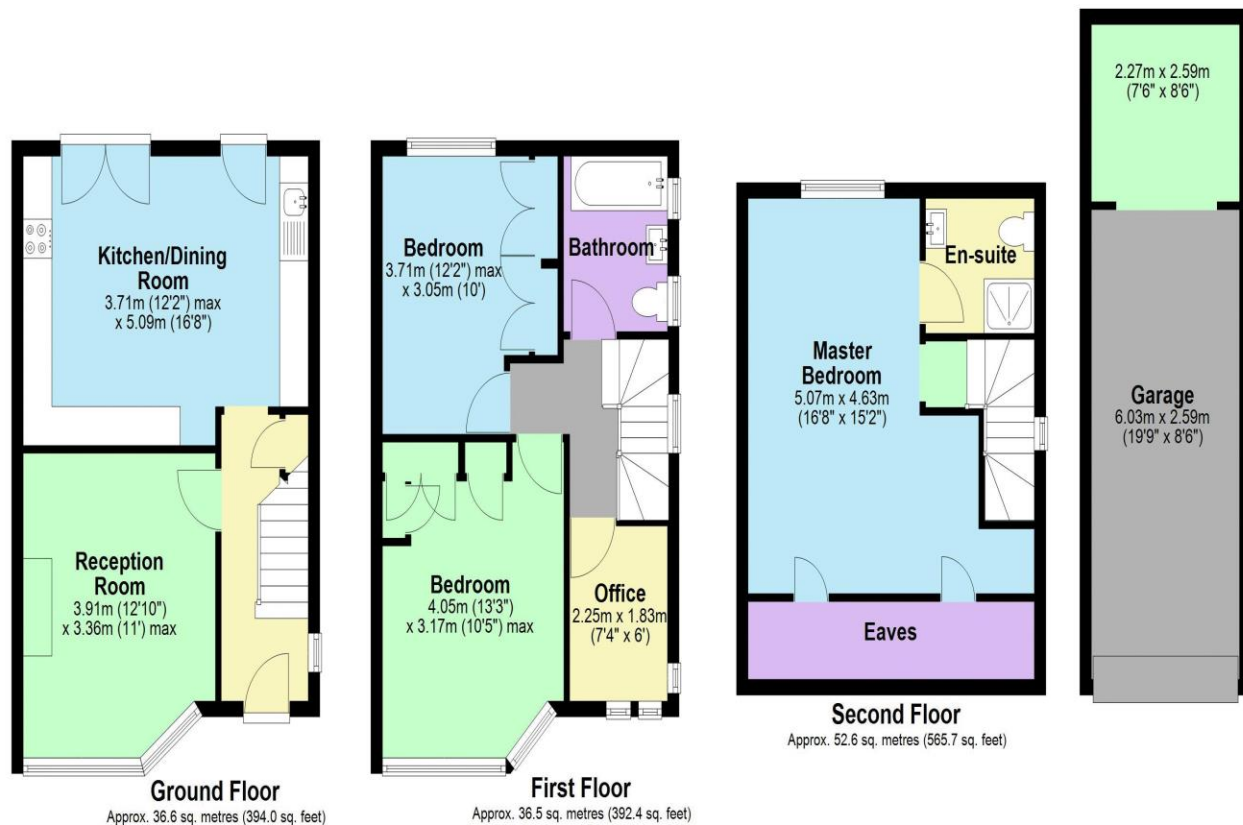


Additional Information

TENURE: FREEHOLD

LOCAL AUTHORITY: LONDON BOROUGH OF HARROW

ENERGY EFFICIENCY RATING: D



Total area: approx. 125.6 sq. metres (1352.1 sq. feet)



We have not sought to verify the legal title of the property, the existence of planning permissions and/or building regulation approvals and have been unable to check the working condition of any services or appliances.

Property layouts are for general guidance and are not drawn exactly to scale. Measurements are taken at the widest points and bays, alcoves, wardrobes etc. may not be shown.