

COLLAPIT CLOSE, NORTH HARROW



Two Bedroom Second Floor Flat

OIEO £300,000

Description

Ideally situated in a quiet cul-de-sac location within a short walk to North Harrow station, this TWO DOUBLE bedroom second floor flat boasts contemporary interiors and generous sized rooms throughout. The flat consists of an Entrance hall, large lounge/dining room, modern kitchen (with appliances) master bedroom, bedroom two (both with wardrobes), bathroom suite with electric shower above bath. BENEFITS include D/Glazing, economy 7 heating, entryphone system, communal gardens and one allocated parking space.



- *Two Double Bedrooms*
- *Double Glazing*
- *New Carpets*
- *Communal Gardens*
- *Second Floor*
- *Economy Electric Heating*
- *Entryphone System*
- *One Allocated Parking Space*



Additional Information

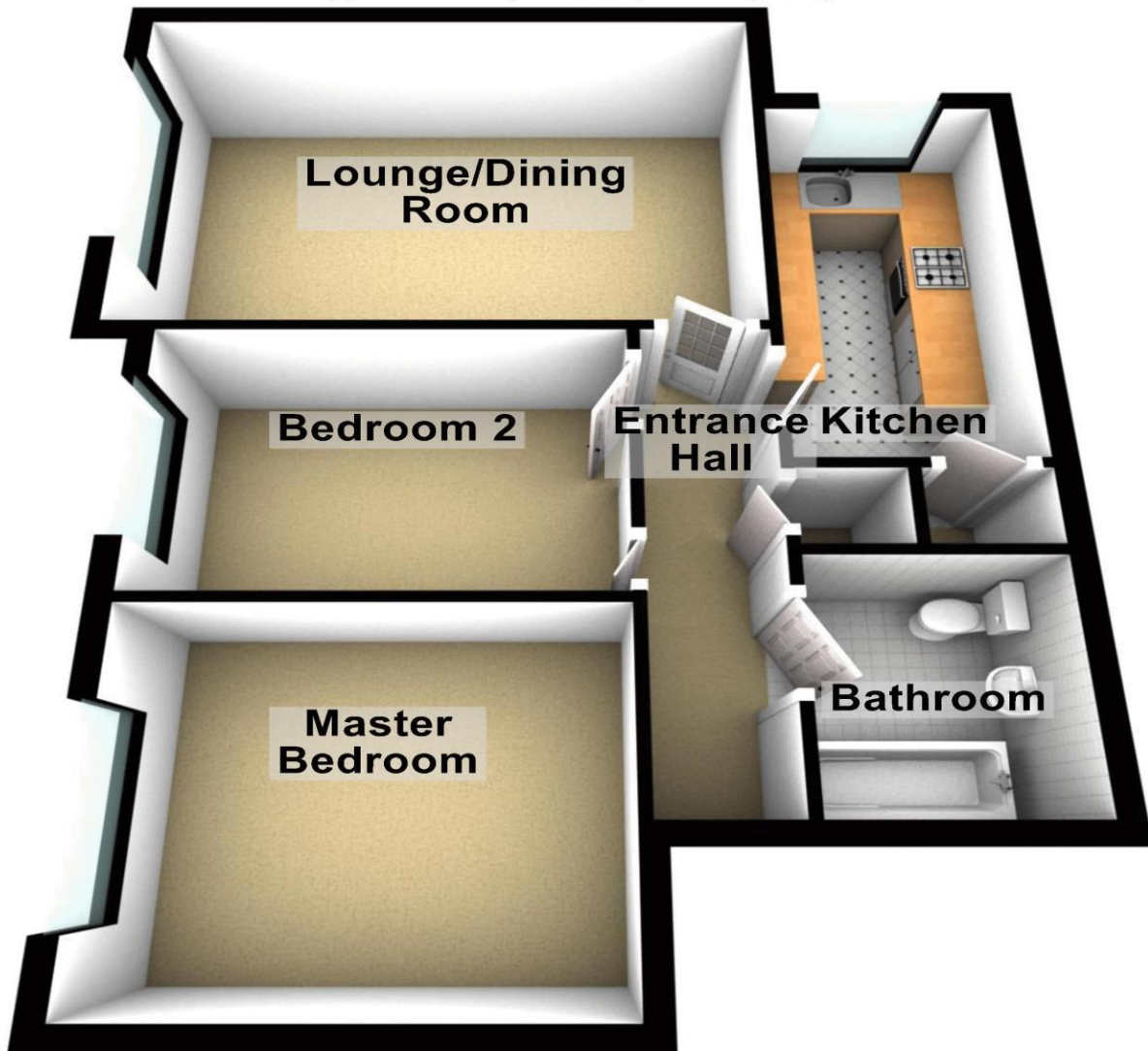
TENURE: (JUST UNDER 170 YEARS)

LOCAL AUTHORITY: LONDON BOROUGH OF HARROW

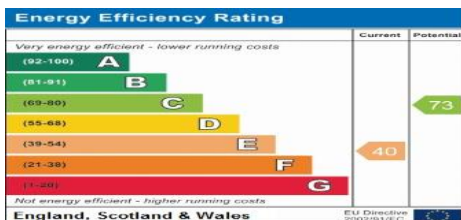
ENERGY EFFICIENCY RATING: E

Second Floor

Approx. 57.3 sq. metres (616.6 sq. feet)



Total area: approx. 57.3 sq. metres (616.6 sq. feet)



We have not sought to verify the legal title of the property, the existence of planning permissions and/or building regulation approvals and have been unable to check the working condition of any services or appliances.

Property layouts are for general guidance and are not drawn exactly to scale. Measurements are taken at the widest points and bays, alcoves, wardrobes etc. may not be shown.