

WOODBERRY AVENUE, NORTH HARROW



Three Bedroom End Of Terrace House

Guide Price £650,000

Description

Robertson Phillips are pleased to be able to offer for sale this "Halls Adjoining" end of terraced corner sited family house with large garage to the rear. Offered in good order the house is well positioned for shopping and transport facilities in the local area. Ample scope to extend for the future. An internal inspection comes highly advised.





- *Three bedroom halls adjoining family house*
- *Ample scope to extend for the future*
- *Gas central heating and double glazed windows*
- *Larger than average garage to the rear*
- *Offered for sale in good order throughout*
- *Sought after location close to facilities*

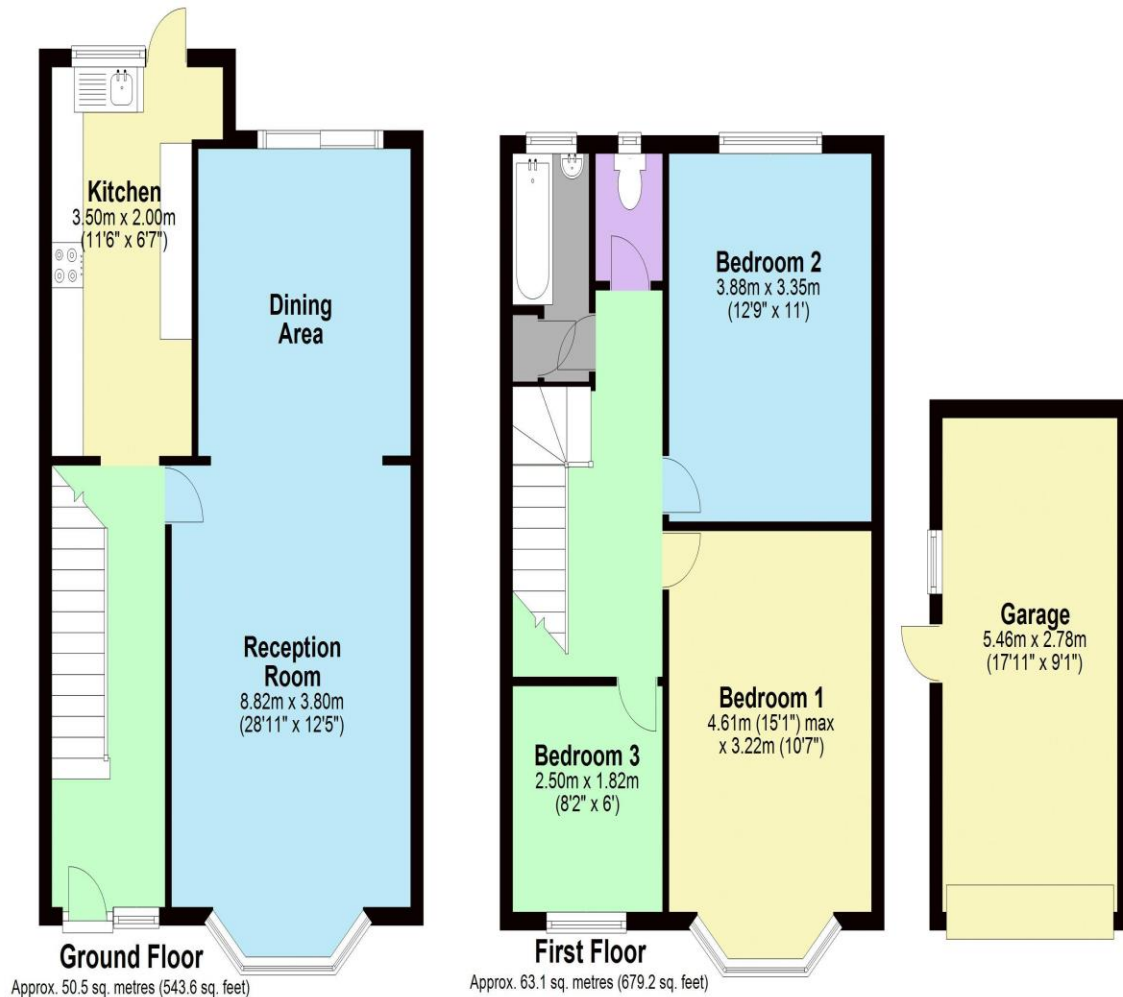


Additional Information

TENURE: FREEHOLD

LOCAL AUTHORITY: LONDON BOROUGH OF HARROW

ENERGY EFFICIENCY RATING: TBC



Total area: approx. 113.6 sq. metres (1222.7 sq. feet)



We have not sought to verify the legal title of the property, the existence of planning permissions and/or building regulation approvals and have been unable to check the working condition of any services or appliances.

Property layouts are for general guidance and are not drawn exactly to scale. Measurements are taken at the widest points and bays, alcoves, wardrobes etc. may not be shown.