

PARKFIELD GARDENS, NORTH HARROW



Four Bedroom Semi Detached House Guide Price £895,000

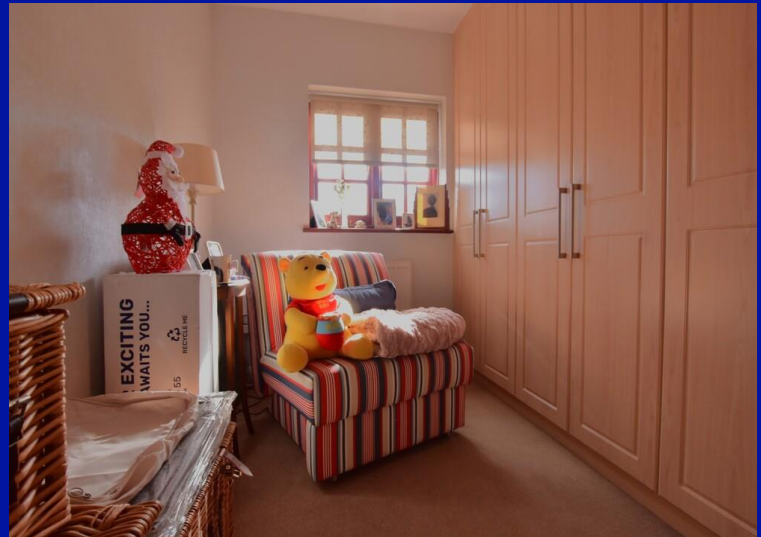
Description

This magnificent four bedroom semi detached property which is situated close to shopping facilities, sought after schools and transportation links. Accommodation: entrance hallway, lounge, dining room, fitted kitchen/breakfast, conservatory, study room, cloakroom, four good sized bedrooms and family bathroom with separate wc. Further benefits include gas central heating, double glazing and an attractive rear garden of over 100ft.





- *Highly desirable cul-de-sac location*
- *Large rear garden over 100ft*
- *Ample scope to extend further (stpp)*
- *Four bedroom semi detached house with own driveway*
- *Offered for sale in good order throughout*
- *Early viewing advised. Chain Free.*

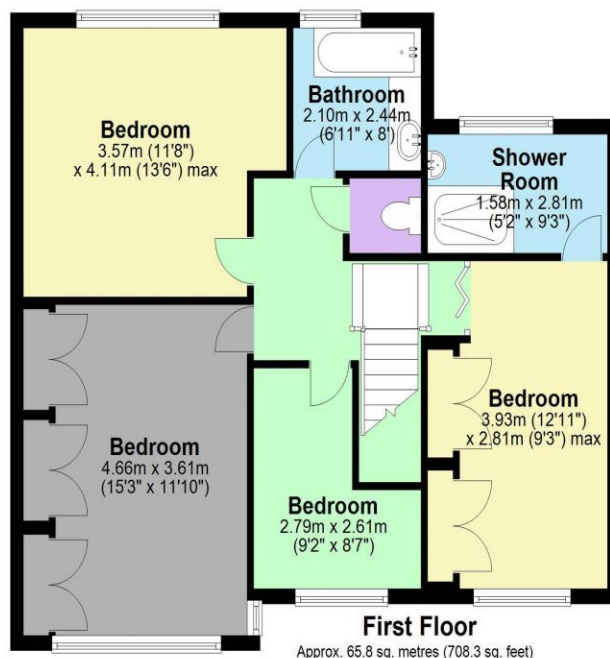
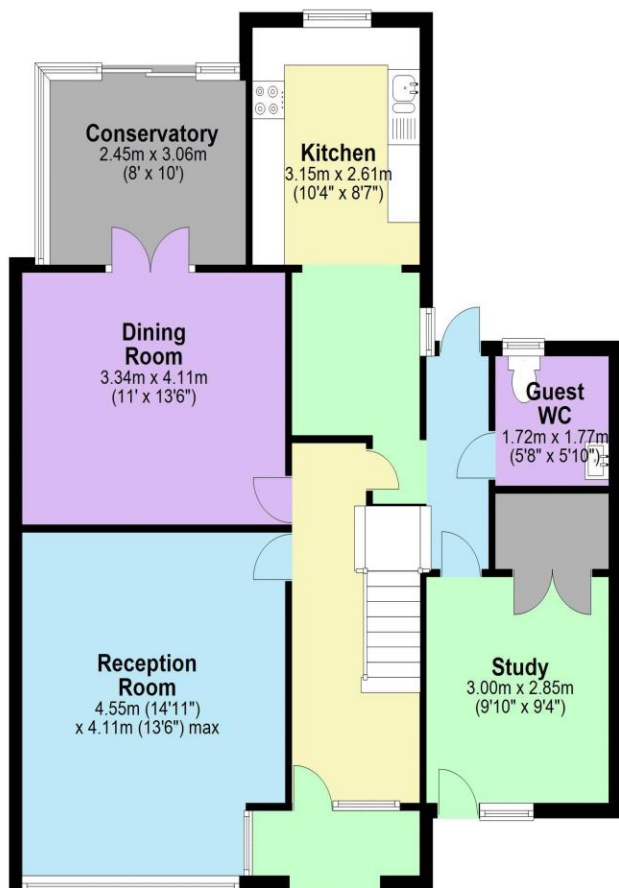


Additional Information

TENURE: FREEHOLD

LOCAL AUTHORITY: LONDON BOROUGH OF HARROW

ENERGY EFFICIENCY RATING: E



Total area: approx. 149.4 sq. metres (1608.1 sq. feet)

Score	Energy rating	Current	Potential
92+	A		
81-91	B		
69-80	C		
55-68	D		
39-54	E		
21-38	F		
1-20	G		



We have not sought to verify the legal title of the property, the existence of planning permissions and/or building regulation approvals and have been unable to check the working condition of any services or appliances.

Property layouts are for general guidance and are not drawn exactly to scale. Measurements are taken at the widest points and bays, alcoves, wardrobes etc. may not be shown.