

HIDE ROAD, HARROW



Four Bedroom Semi Detached House

Guide Price £675,000

Description

A period four bedroom semi detached house with off street parking located on one of Harrows more sought after roads close to shopping and transport facilities including Harrow Metropolitan Line station. The property is offered for sale in need of some updating, which has been reflected in a highly competitive guide price. Benefits to the property include many period feature, two large reception rooms (one is a through lounge), a large kitchen, the aforementioned off street parking and very good sized rear garden which offers scope to extend (stpp). Hide Road is a popular residential road with a good mix of property styles and sizes.



Location: Located just moments from North Harrow, Harrow on the Hill, and Harrow & Wealdstone train stations, this property offers easy access to a wide range of local shops, coffee houses, and restaurants. Plus, with the highly sought-after Marlborough Hill Primary School just a stone's throw away, this is an opportunity not to be missed!





- *Substantial four bedroom semi detached Edwardian house*
- *Gas central heating and double glazed windows*
- *Off street parking and large rear garden*
- *In excess of 1500sq foot with ample scope to extend*
- *Some updating required*
- *No Upper Chain, Viewing advised*

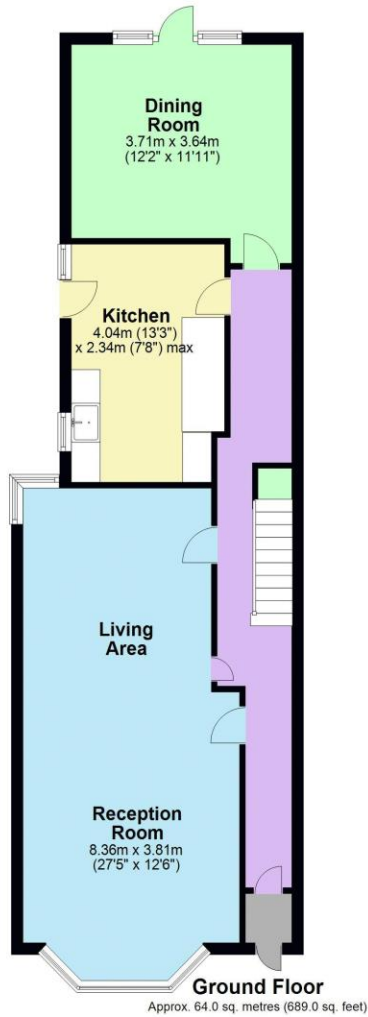


Additional Information

TENURE: FREEHOLD

LOCAL AUTHORITY: LONDON BOROUGH OF HARROW

ENERGY EFFICIENCY RATING: E



Total area: approx. 129.1 sq. metres (1389.8 sq. feet)

Score	Energy rating	Current	Potential
92+	A		
81-91	B		82 B
69-80	C		
55-68	D		
39-54	E	54 E	
21-38	F		
1-20	G		



We have not sought to verify the legal title of the property, the existence of planning permissions and/or building regulation approvals and have been unable to check the working condition of any services or appliances.

Property layouts are for general guidance and are not drawn exactly to scale. Measurements are taken at the widest points and bays, alcoves, wardrobes etc. may not be shown.