

NORTHOLT ROAD, SOUTH HARROW



Three Bedroom Split Level Flat

Guide Price £300,000

Description

Robertson Phillips are proud to present, this purpose built, three bedroom split level flat with no upper chain and a short walk to South Harrow Station. The property consists of; A communal staircase access to the second floor, entering the property from the front door, to an entrance hallway a separate kitchen and a spacious Lounge/Diner. Leading up to the third floor you have two double bedrooms and one single bedroom and a modern family bathroom. Further benefits include; ample storage, integral garage, gas central heating, and double glazed windows.



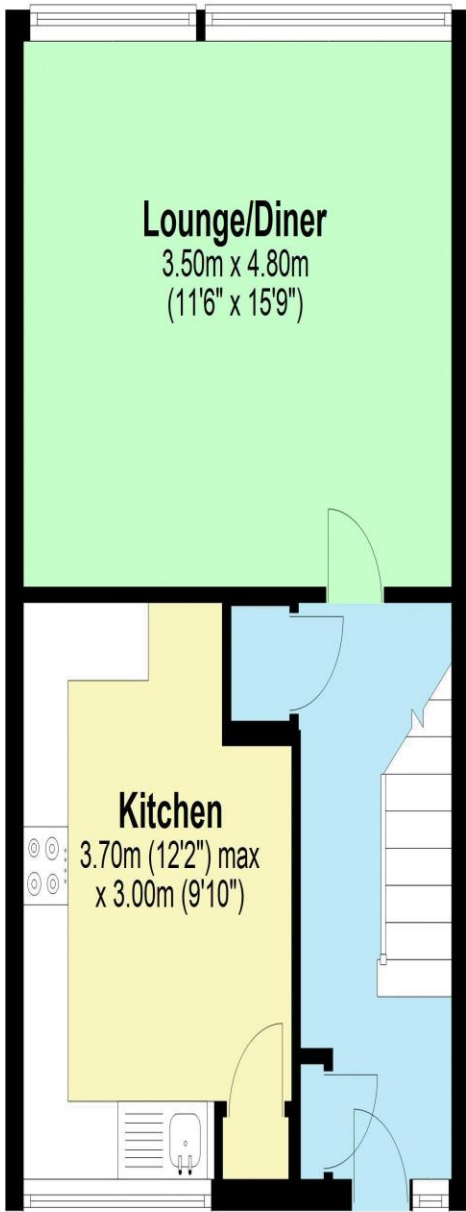


- *Three Bedroom Split Level Flat*
- *Chain Free*
- *Close To South Harrow Station
On The Piccadilly Line*
- *Gas Central Heating*
- *Separate Kitchen*
- *Ample Storage*
- *Integral Garage*
- *Double Glazed Windows*



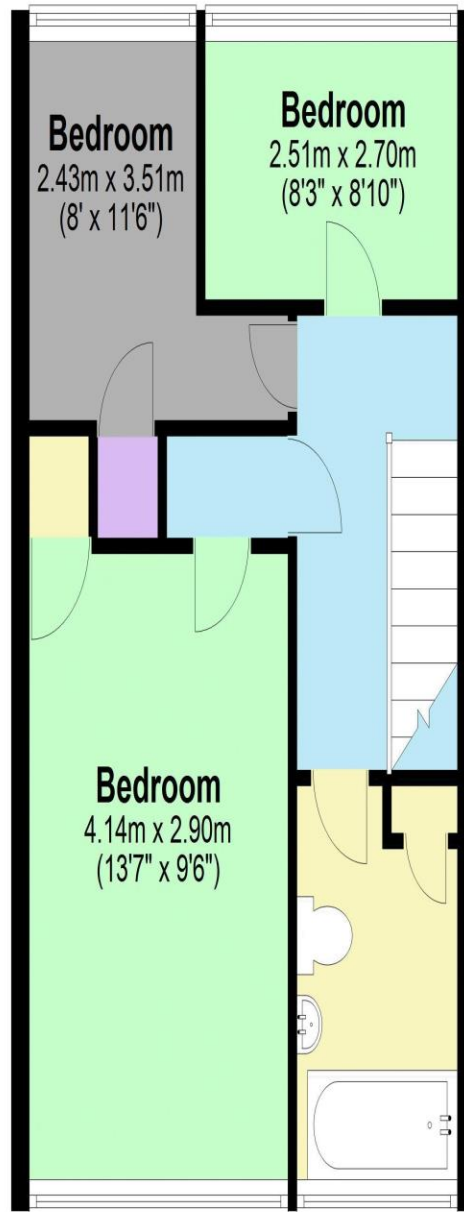
Additional Information

TENURE: LEASEHOLD 86 YEARS
LOCAL AUTHORITY: LONDON BOROUGH OF HARROW.
ENERGY EFFICIENCY RATING: TBC



Second Floor

Approx. 35.0 sq. metres (376.7 sq. feet)



Third Floor

Approx. 35.0 sq. metres (376.7 sq. feet)

Total area: approx. 70.0 sq. metres (753.5 sq. feet)



We have not sought to verify the legal title of the property, the existence of planning permissions and/or building regulation approvals and have been unable to check the working condition of any services or appliances.

Property layouts are for general guidance and are not drawn exactly to scale. Measurements are taken at the widest points and bays, alcoves, wardrobes etc. may not be shown.