

MERIVALE ROAD, WEST HARROW



Two Bedroom First Floor Flat

Guide Price £325,000

Description

Robertson Phillips are pleased to be able to offer for sale this two bedroom first floor flat converted from this period property situated in a desirable sort after location within walking distance of West Harrow Metropolitan line station and West Harrow recreation park and walking distance to the Harrow on the Hill. This first floor flat benefits from double glazed windows, economical electric heating and a lease in excess of 120 years. Ideal for first time or investment buyers the flat has no upper chain. Viewing advised.

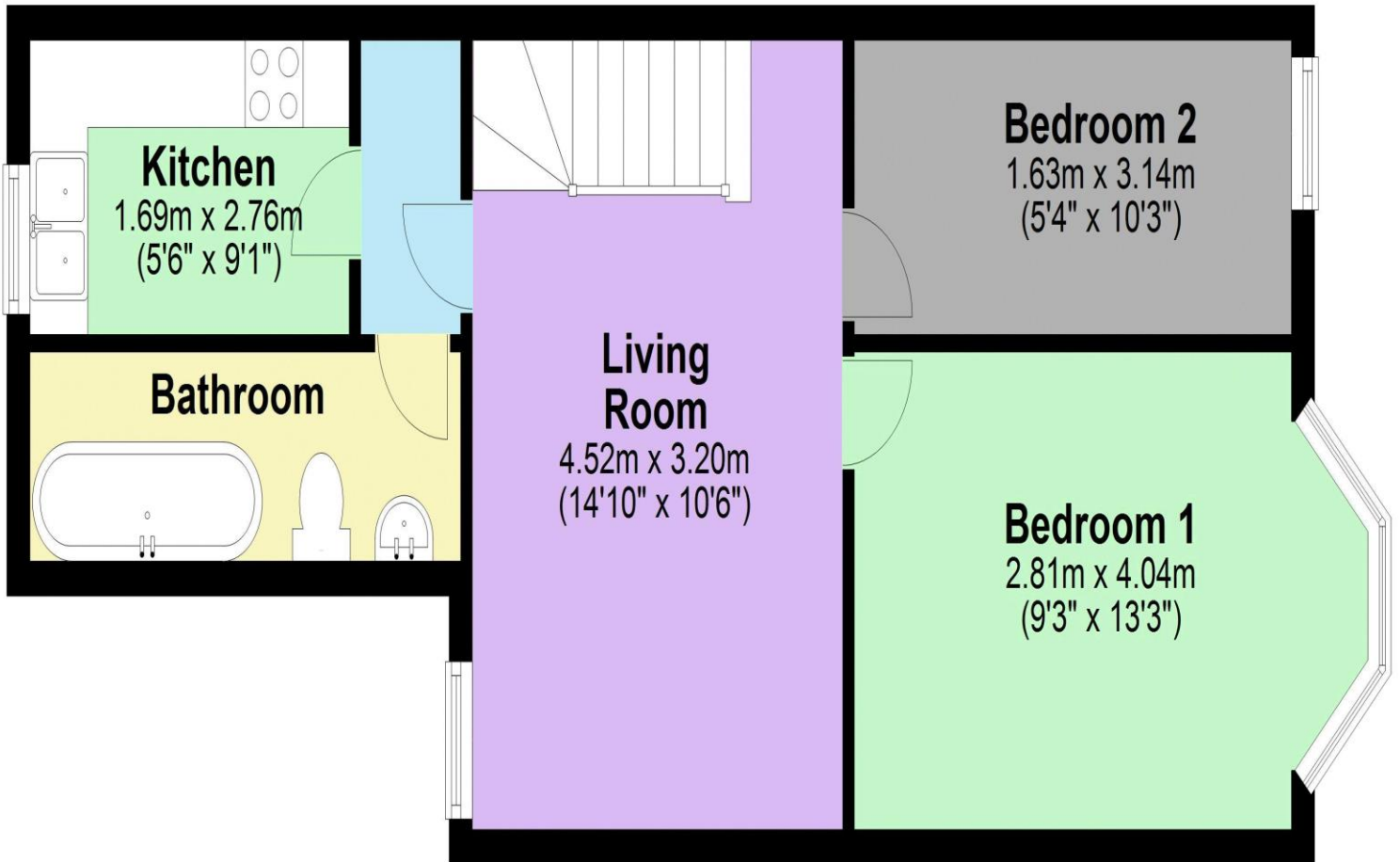


- *Two bedroom first floor converted flat*
- *Long lease and No Upper Chain*
- *Viewing advised*
- *Sort after West Harrow location*
- *Double glazed and electric heating*



Additional Information

TENURE: LEASEHOLD
LOCAL AUTHORITY: LONDON BOROUGH OF HARROW
ENERGY EFFICIENCY RATING: D



First Floor

Approx. 43.7 sq. metres (470.0 sq. feet)

Total area: approx. 43.7 sq. metres (470.0 sq. feet)



We have not sought to verify the legal title of the property, the existence of planning permissions and/or building regulation approvals and have been unable to check the working condition of any services or appliances.

Property layouts are for general guidance and are not drawn exactly to scale. Measurements are taken at the widest points and bays, alcoves, wardrobes etc. may not be shown.