

HAZELWOOD CLOSE, NORTH HARROW



Two Bedroom First Floor Flat

Guide Price £315,000

Description

This spacious two bedroom first floor flat enters the market with Robertson Phillips Estate Agents. The property is situated close to shopping facilities, sought after schools and transportation links within walking distance. The flat comprises of an entrance hallway, lounge/diner, a modern fitted kitchen, two double bedrooms and a modern family bathroom. Further benefits include gas central heating, double glazing, private parking, attractive communal gardens and a long lease.



Location: Set on Hazelwood Close, the property is only a short walk to the High Street of North Harrow, which provides access to an array of amenities, the local gym and North Harrow Station, which services the Metropolitan Line.





- *Two Bedrooms*
- *Newly Fitted Kitchen*
- *Off Street Parking*
- *Newly Installed Bathroom*
- *Chain Free*
- *Long Lease*
- *Close to Met line*
- *Gas Central Heating*



Additional Information

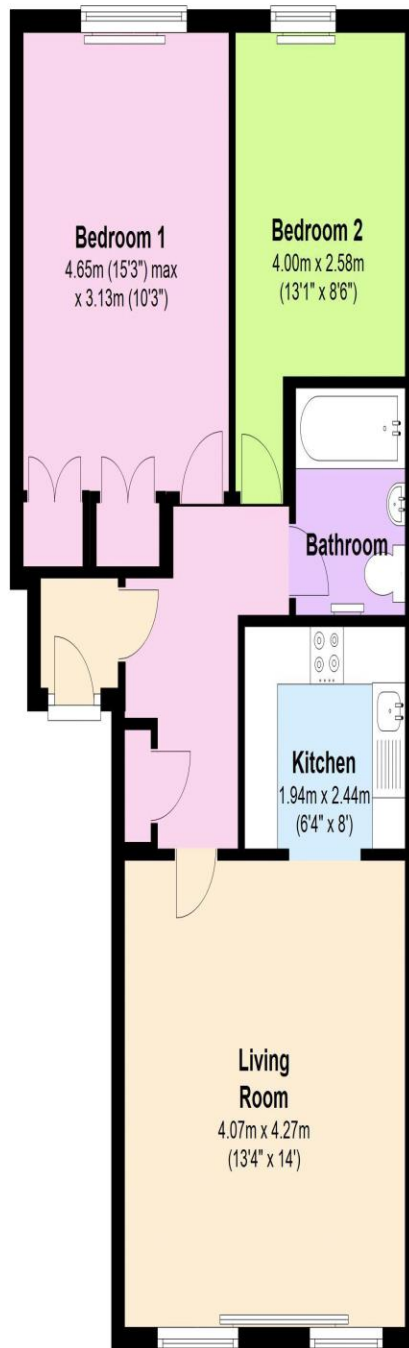
TENURE: LEASEHOLD

LOCAL AUTHORITY: LONDON BOROUGH OF HARROW.

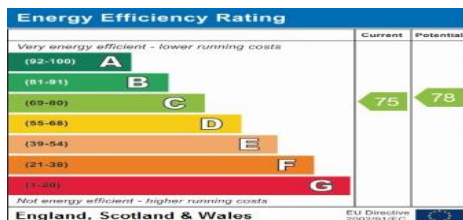
ENERGY EFFICIENCY RATING: TBC

First Floor

Approx. 56.5 sq. metres (607.9 sq. feet)



Total area: approx. 56.5 sq. metres (607.9 sq. feet)



We have not sought to verify the legal title of the property, the existence of planning permissions and/or building regulation approvals and have been unable to check the working condition of any services or appliances.

Property layouts are for general guidance and are not drawn exactly to scale. Measurements are taken at the widest points and bays, alcoves, wardrobes etc. may not be shown.