

PARKFIELD CRESCENT, HARROW



Four Bedroom Detached House

Guide Price £845,000-£875,000

Description

Guide Price £845,000 to £875,000 A highly attractive and very individual four bedroom two bathroom detached house, modernised to a very high standard with easy access to Hatch End and North Harrow with their respective shopping and transport facilities. The accommodation comprises hall, cloakroom, lounge intercommunicating to dining room, rebuilt conservatory, fitted kitchen/breakfast room with the four bedroom, two bathrooms including an en-suite and modern bathroom/WC to the first floor. Further benefits include, a pretty rear garden, gas central heating, double glazed windows and ample off street parking.



Location: Parkfield Crescent is situated within 0.4 miles to Headstone Lane station on the overground, providing access into Euston within 15 minutes. The property also falls within the catchment area to Pinner Park Primary School and Nower Hill High School, both highly respected schools within the area.





- *Guide Price £845,000 to £875,000 . Four bedroom detached house with en-suite to the master bedroom*
- *Gas central heating and double glazed windows*
- *Guests ground floor cloakroom*
- *Offered for sale in very good order throughout*
- *Two reception rooms plus usable conservatory addition*
- *Viewing highly advised*

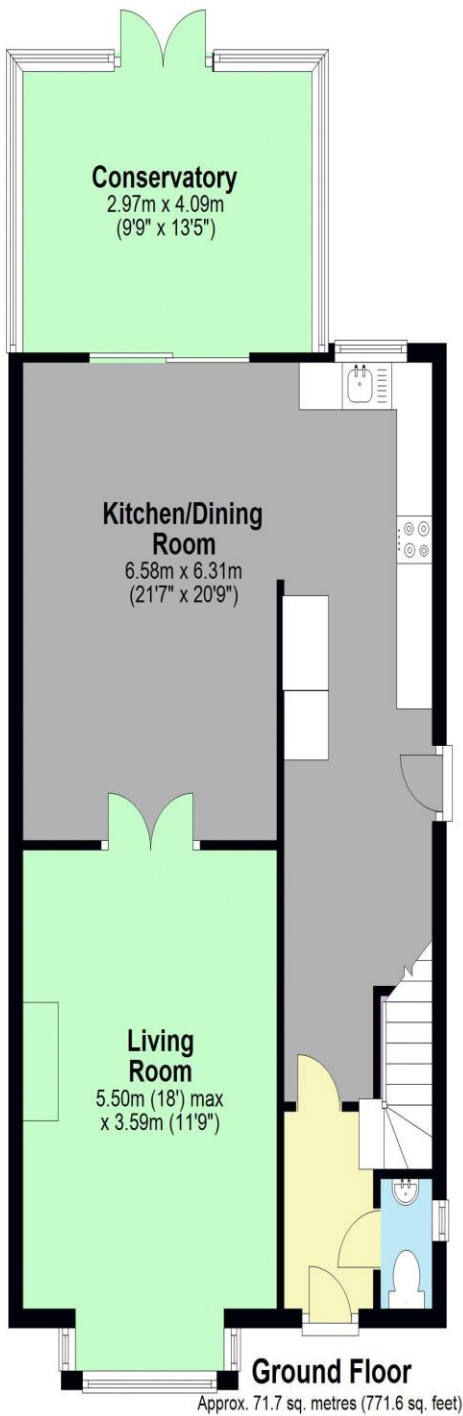


Additional Information

TENURE: FREEHOLD

LOCAL AUTHORITY: LONDON BOROUGH OF HARROW

ENERGY EFFICIENCY RATING: D



Total area: approx. 130.9 sq. metres (1409.0 sq. feet)



We have not sought to verify the legal title of the property, the existence of planning permissions and/or building regulation approvals and have been unable to check the working condition of any services or appliances.

Property layouts are for general guidance and are not drawn exactly to scale. Measurements are taken at the widest points and bays, alcoves, wardrobes etc. may not be shown.