

RISINGHOLME CLOSE, HARROW WEALD

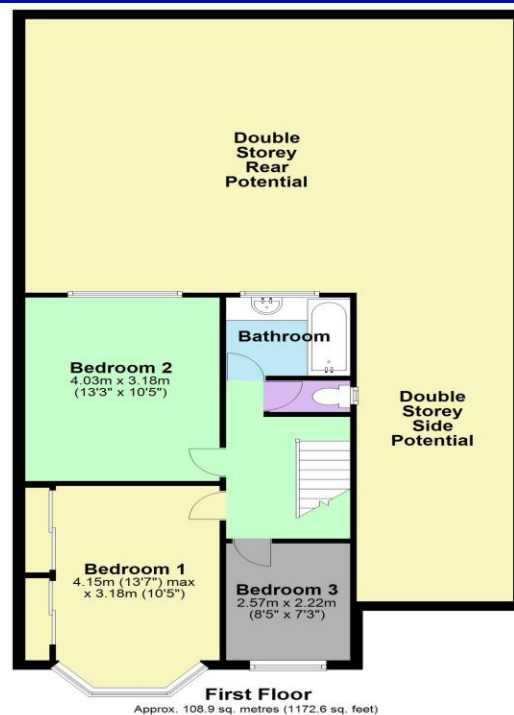
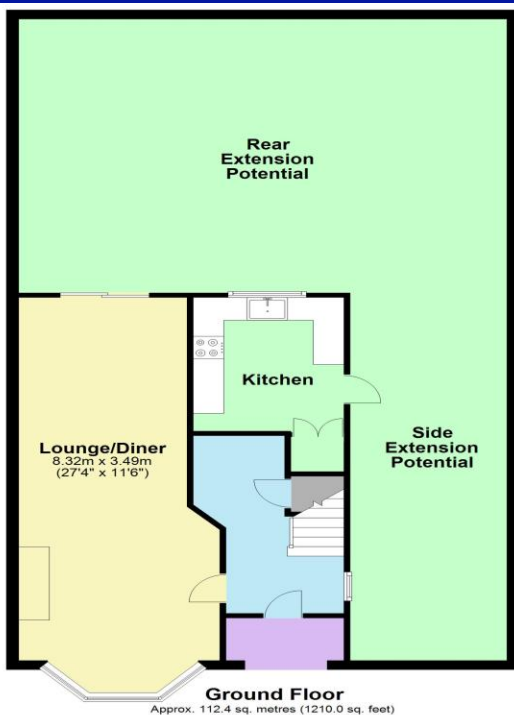


Three Bedroom Detached House

Guide Price £650,000

Description

Robertson Phillips are pleased to be able to offer for sale this three bedroom detached house with a large garage via own driveway occupying a large plot which gives scope for tremendous extension possibilities (stpp). Of interest to both owner occupiers and investors the house is a blank canvass with gas central heating and double glazed windows as an existing benefit. Close to shopping and transport facilities an internal inspection comes highly advised.



Total area: approx. 221.4 sq. metres (2382.6 sq. feet)

- *Three bedroom detached house*
- *Large plot with scope for extensions/redevelopment (stpp)*
- *Within easy reach of shopping and transport facilities*
- *Large garage via own driveway*
- *Cul-de-sac location*

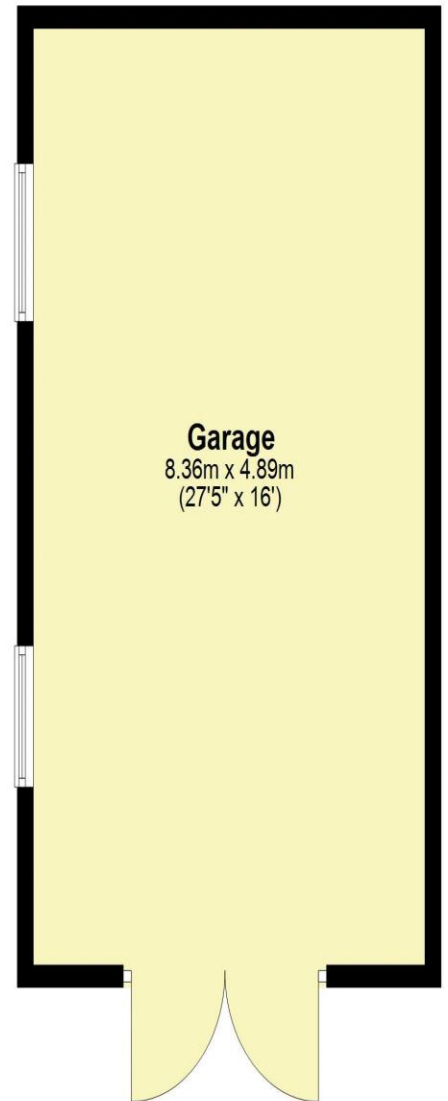
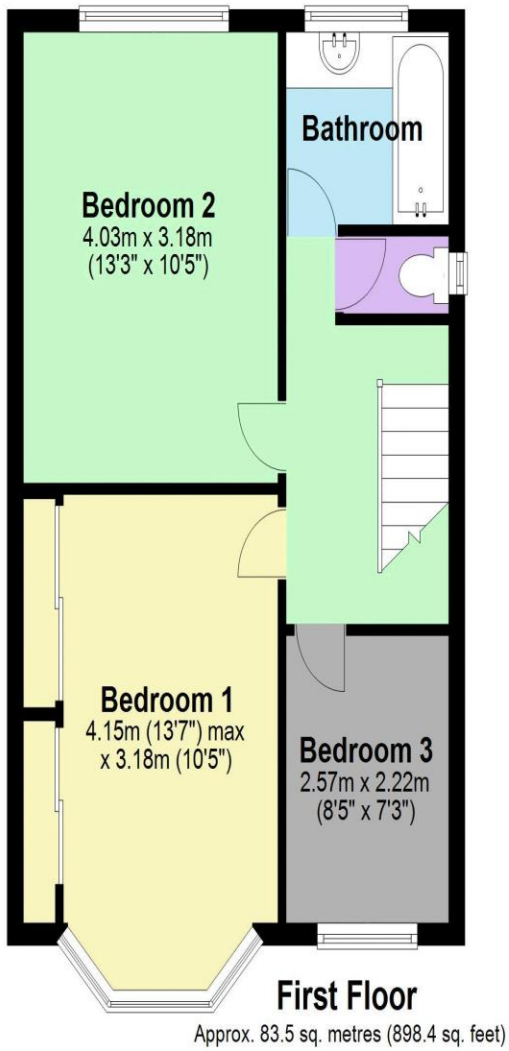
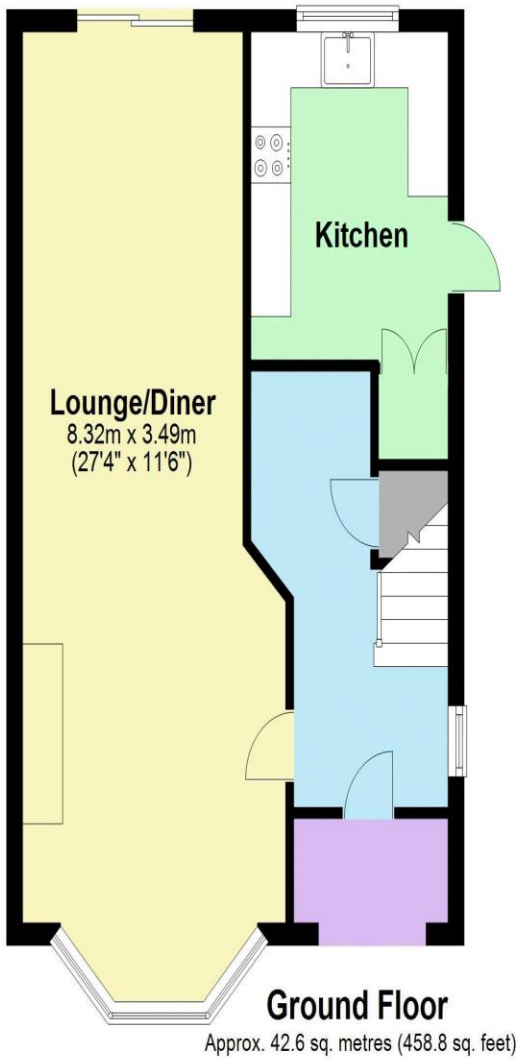


Additional Information

TENURE: FREEHOLD

LOCAL AUTHORITY: LONDON BOROUGH OF HARROW

ENERGY EFFICIENCY RATING: E



Total area: approx. 126.1 sq. metres (1357.2 sq. feet)



We have not sought to verify the legal title of the property, the existence of planning permissions and/or building regulation approvals and have been unable to check the working condition of any services or appliances.

Property layouts are for general guidance and are not drawn exactly to scale. Measurements are taken at the widest points and bays, alcoves, wardrobes etc. may not be shown.