

***WEIGHTON ROAD, HARROW WEALD***

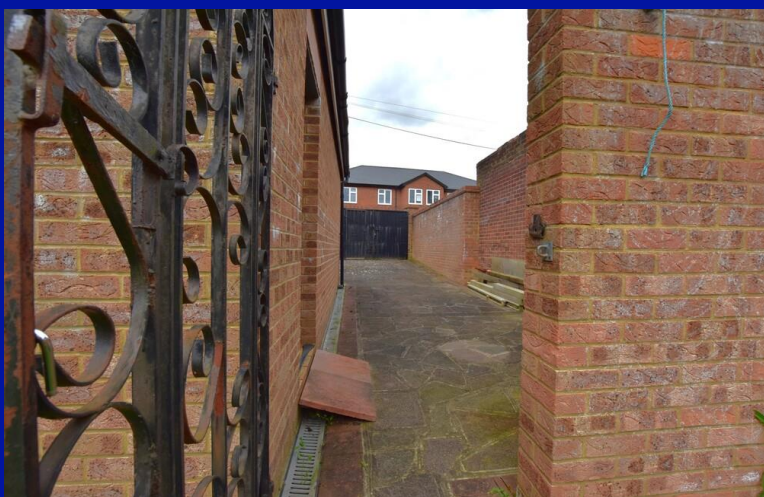


***Five Bedroom Semi Detached House***

***Guide Price £900,000***

## A SIZABLE SEMI DETACHED HOUSE

offering a great deal of flexibility to be used as a five bedroom house or as a three bedroom house with a self contained two bedroom annex. Please inspect the floorplan to explore the options that the property can offer for you. The house is in very good condition and benefits from gas fired central heating, double glazed windows, off street parking and a useful garage to the rear with access via Alma Row. An internal inspection comes highly advised to appreciate this property.



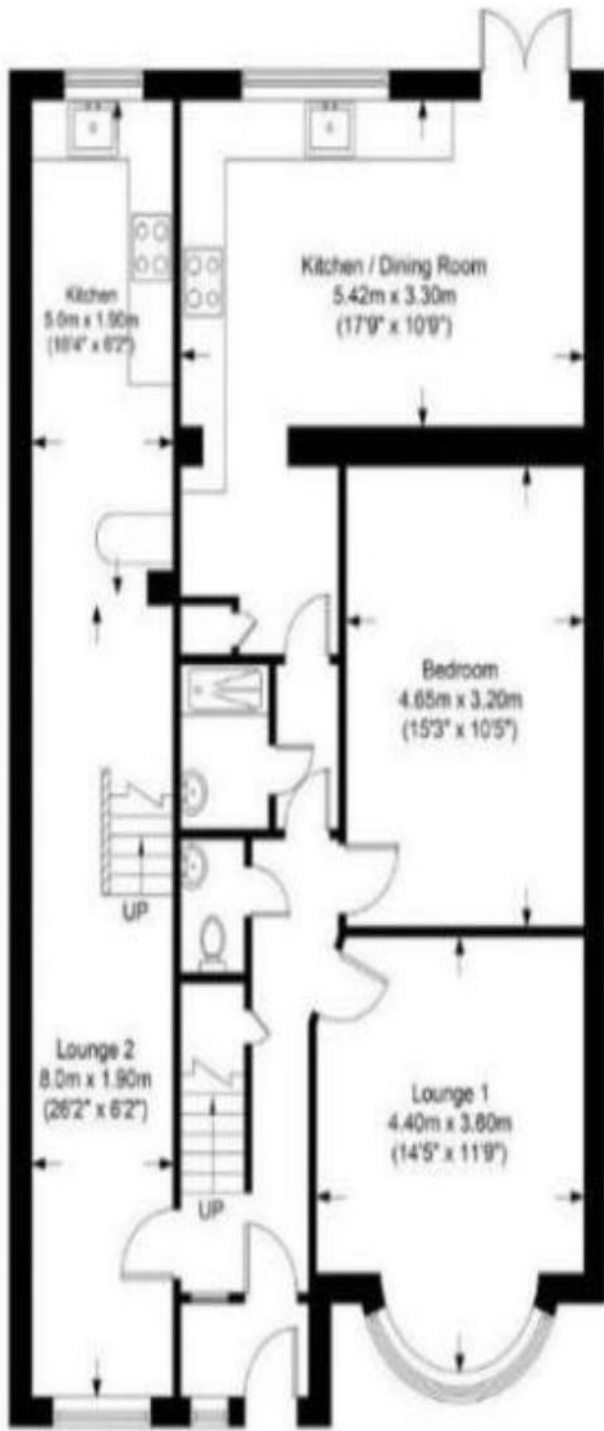


- *Five bedroom semi detached house*
- *Well positioned for shopping and transport facilities*
- *No Upper Chain. Viewing highly advised*
- *Offered for sale in very good order throughout*
- *Gas central heating and Double glazed windows*

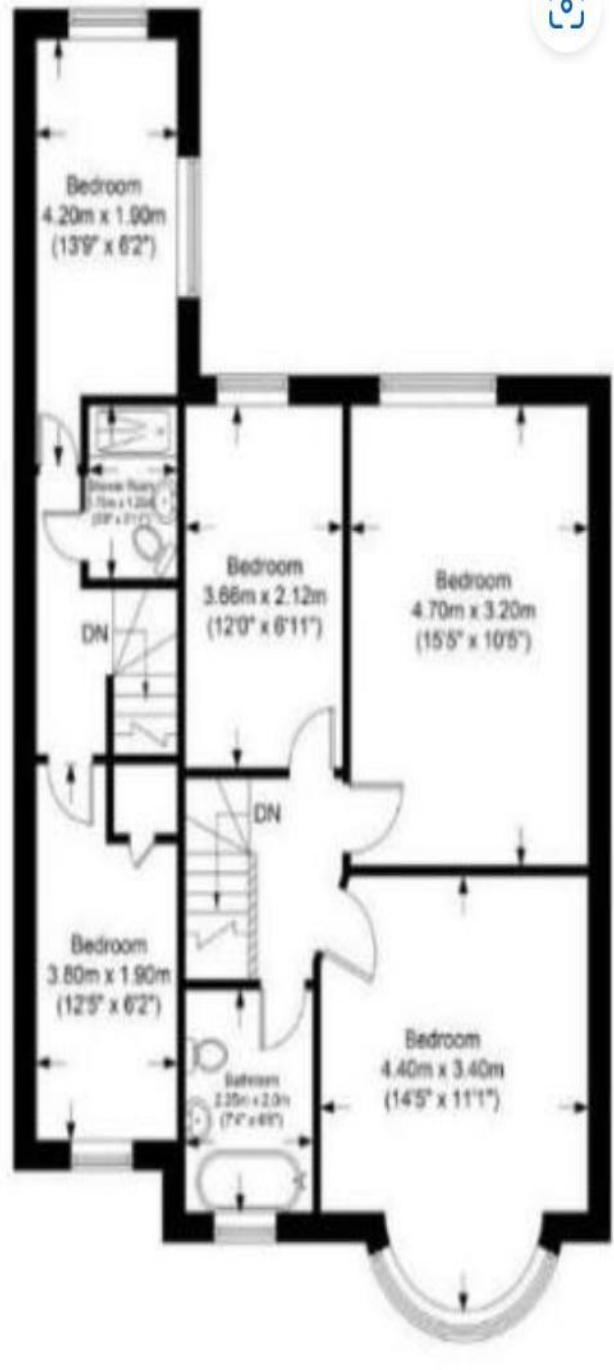


### Additional Information

TENURE: FREEHOLD  
LOCAL AUTHORITY: LONDON BOROUGH OF HARROW  
ENERGY EFFICIENCY RATING: C



Ground Floor



First Floor



We have not sought to verify the legal title of the property, the existence of planning permissions and/or building regulation approvals and have been unable to check the working condition of any services or appliances.

Property layouts are for general guidance and are not drawn exactly to scale. Measurements are taken at the widest points and bays, alcoves, wardrobes etc. may not be shown.