

SAPPHIRE COURT, NORTH HARROW

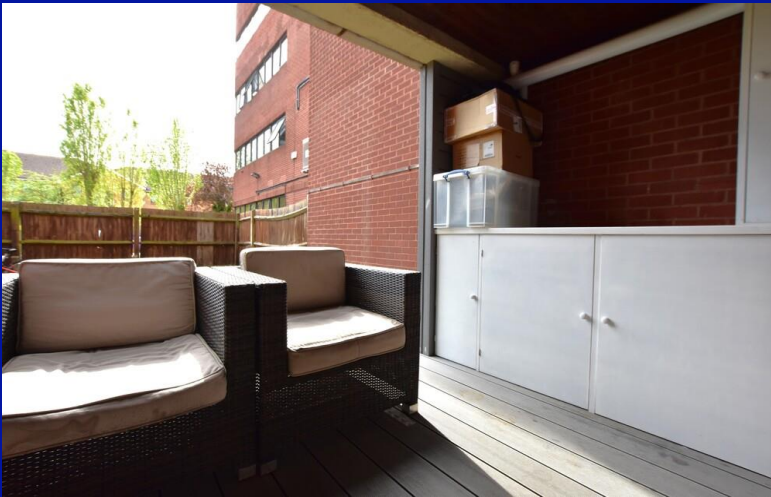


Two Bedroom Purpose Built Flat

Guide Price £425,000

Description

Offered for sale in very good order throughout is this ideally located, two bedroom purpose built apartment. The ground floor flat is situated just 0.2 miles from North Harrow station, so is well placed for commuters looking to get into the city with minimal fuss. Comprising of; Entrance hallway, spacious lounge/dining room, fitted kitchen, two good sized bedrooms and spacious bathroom. Further benefits include gas central heating, double glazing, attractive communal grounds and allocated parking.



Location: Sapphire Court, is on Pinner Road, just off the High Road itself, and 0.2 miles from North Harrow station which provides access to the metropolitan line. There is an array of eateries, amenities and the local gym also in eyeshot of the property.

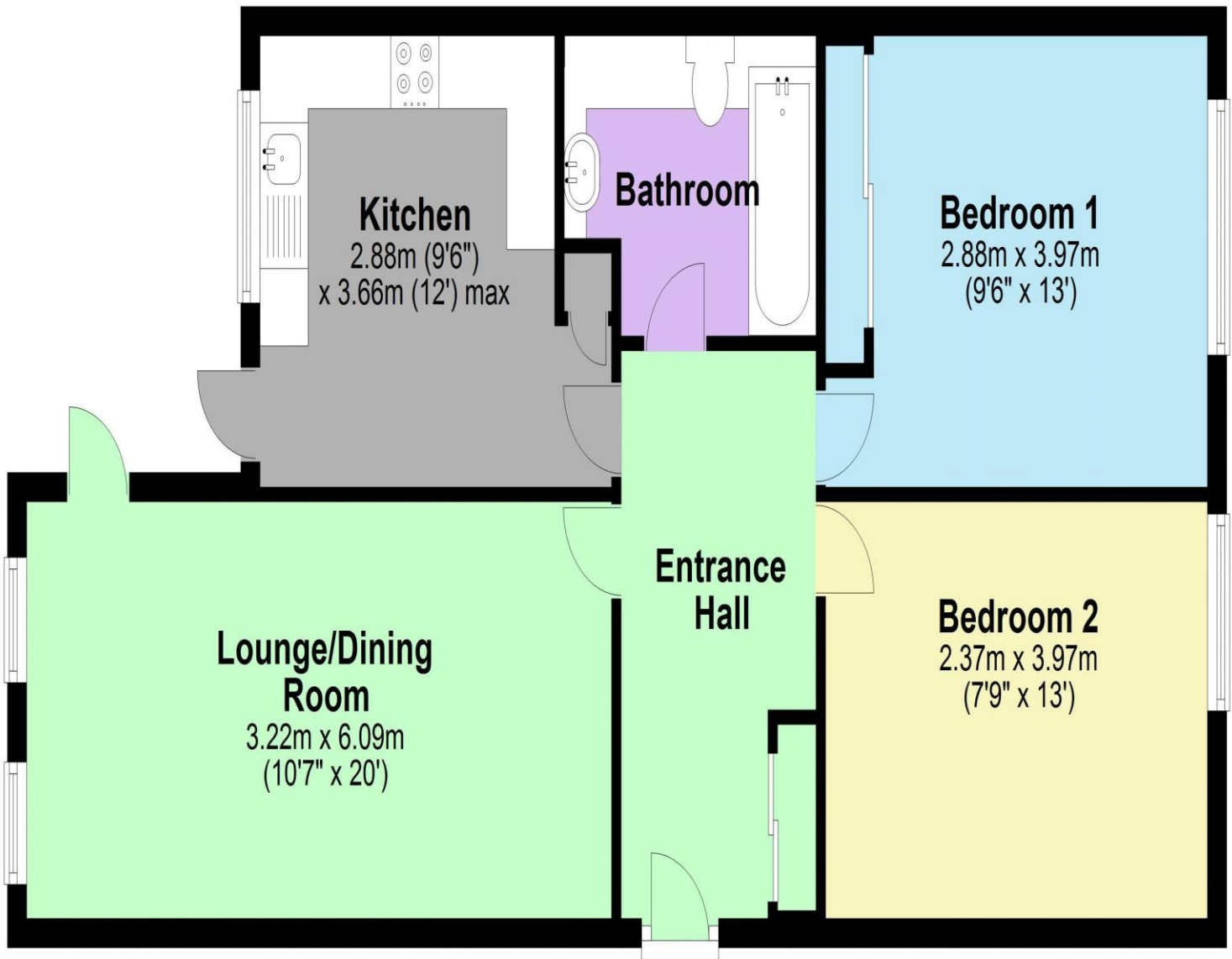


- *Two bedroom ground floor apartment*
- *Gas central heating and Double glazed windows*
- *Allocated parking*
- *Share of Freehold*
- *Offered for sale in very good order throughout*
- *Communal grounds with direct access*
- *Viewing advised, No Upper Chain*



Additional Information

TENURE: SHARE OF FREEHOLD
LOCAL AUTHORITY: LONDON BOROUGH OF HARROW
ENERGY EFFICIENCY RATING: C



Ground Floor

Approx. 65.1 sq. metres (701.2 sq. feet)

Total area: approx. 65.1 sq. metres (701.2 sq. feet)



We have not sought to verify the legal title of the property, the existence of planning permissions and/or building regulation approvals and have been unable to check the working condition of any services or appliances.

Property layouts are for general guidance and are not drawn exactly to scale. Measurements are taken at the widest points and bays, alcoves, wardrobes etc. may not be shown.