

HIDE ROAD, HARROW



Three Bedroom Semi Detached House

Guide Price £599,950

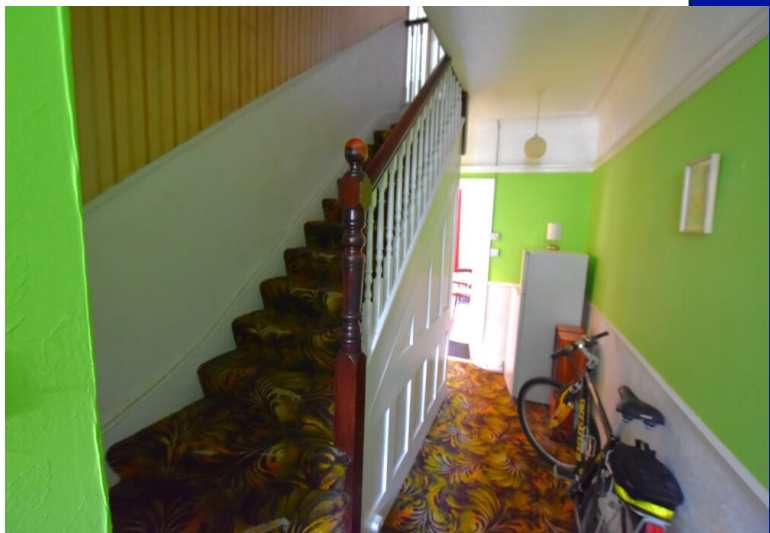
Description

A period three bedroom semi detached house with off street parking located on one of Harrows more sought after roads close to shopping and transport facilities including Harrow Metropolitan Line station. The property is offered for sale in need of modernisation, which has been reflected in a highly competitive guide price. Benefits to the property include many period features, two large reception rooms, a large kitchen, the aforementioned off street parking and very good sized rear garden which offers scope to extend (stpp). Hide Road is a popular residential road with a good mix of property styles and sizes.



Location: Located just moments from North Harrow, Harrow on the Hill, and Harrow & Wealdstone train stations, this property offers easy access to a wide range of local shops, coffee houses, and restaurants. Plus, with the highly sought-after Marlborough Hill Primary School just a stone's throw away, this is an opportunity not to be missed!





- *Three Bedroom Period Semi Detached House*
- *In Need Of Work*
- *Two Reception Rooms*
- *Good School Catchment*
- *For Sale With No Upper Chain*
- *Potential To Extend (STTP)*
- *Period Features*
- *Sought After Road*

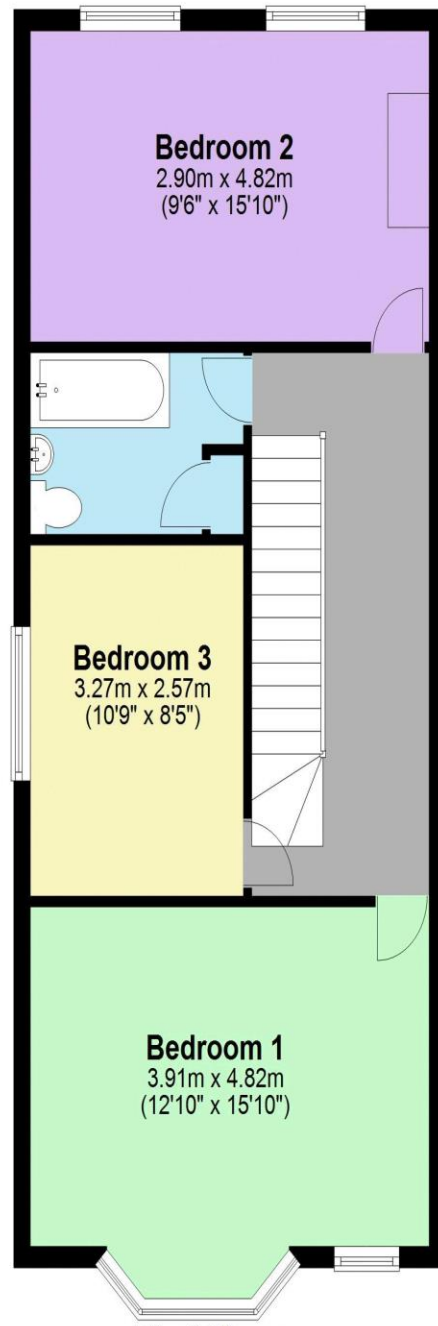
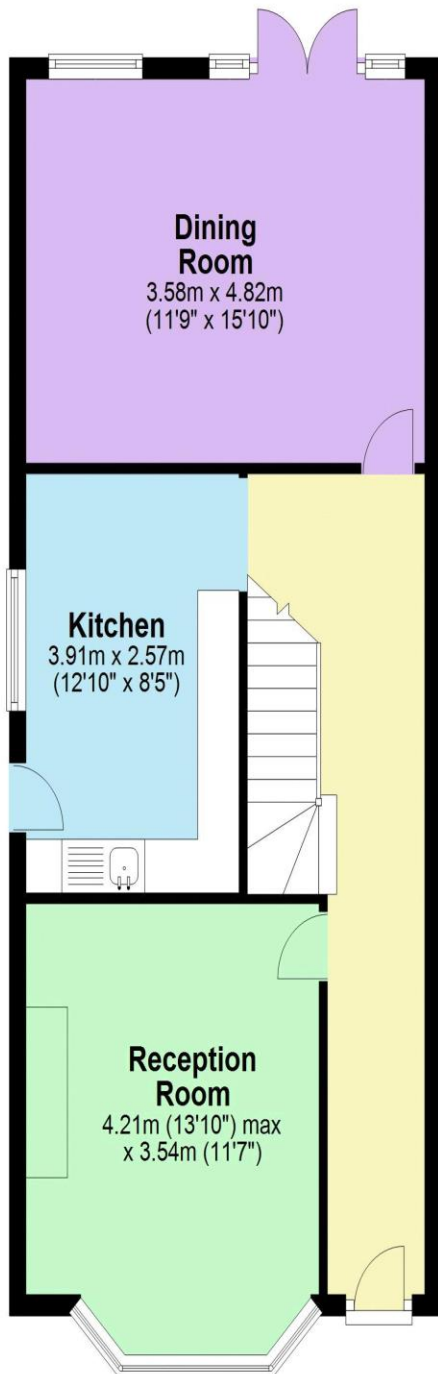


Additional Information

TENURE: FREEHOLD

LOCAL AUTHORITY: LONDON BOROUGH OF HARROW

ENERGY EFFICIENCY RATING: TBC



Total area: approx. 109.9 sq. metres (1183.4 sq. feet)



We have not sought to verify the legal title of the property, the existence of planning permissions and/or building regulation approvals and have been unable to check the working condition of any services or appliances.

Property layouts are for general guidance and are not drawn exactly to scale. Measurements are taken at the widest points and bays, alcoves, wardrobes etc. may not be shown.