

# ***KINGSLEY ROAD, PINNER***



***Three Bedroom Terraced House***

***Guide Price £650,000***

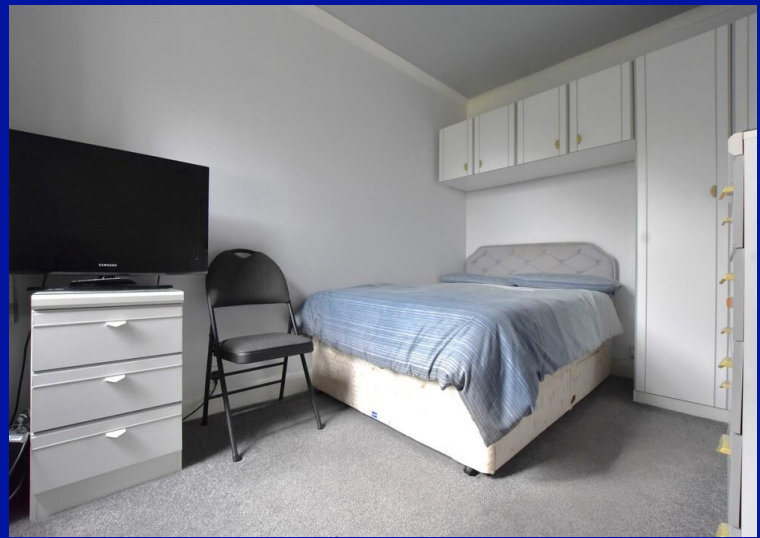
## *Description*

This charming three bedroom terraced property enters the market with Robertson Phillips Estate Agents. The property is situated close to shopping facilities, sought after schools and transportation links. Accommodation: lounge/dining room, fitted kitchen, first floor landing, three good sized bedrooms and shower room and WC. Further benefits include gas central heating, part double glazing and an attractive garden.





- *Three bedroom character terraced house*
- *Offered for sale in good condition*
- *Viewing highly advised*
- *Highly sought after location close to facilities*
- *Some period features*

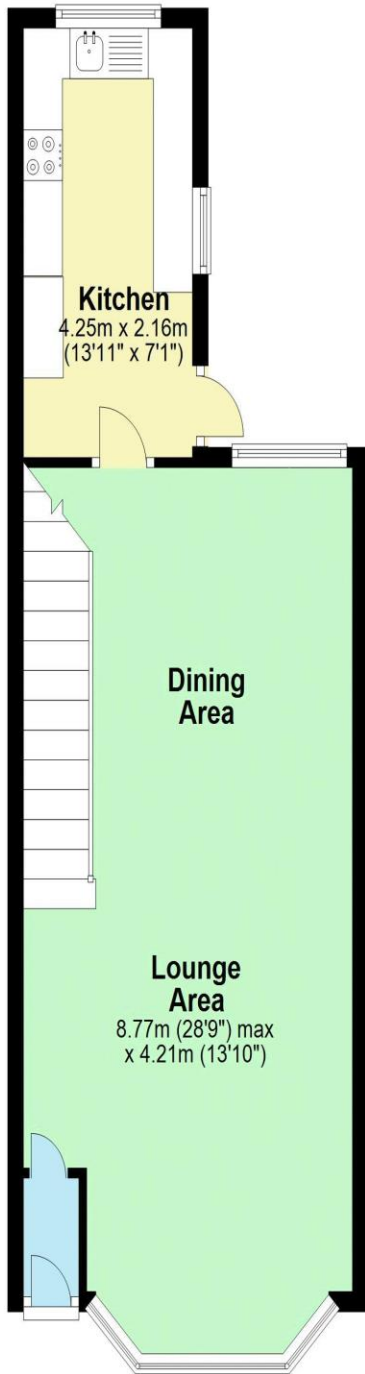


**Additional Information**

**TENURE: FREEHOLD**

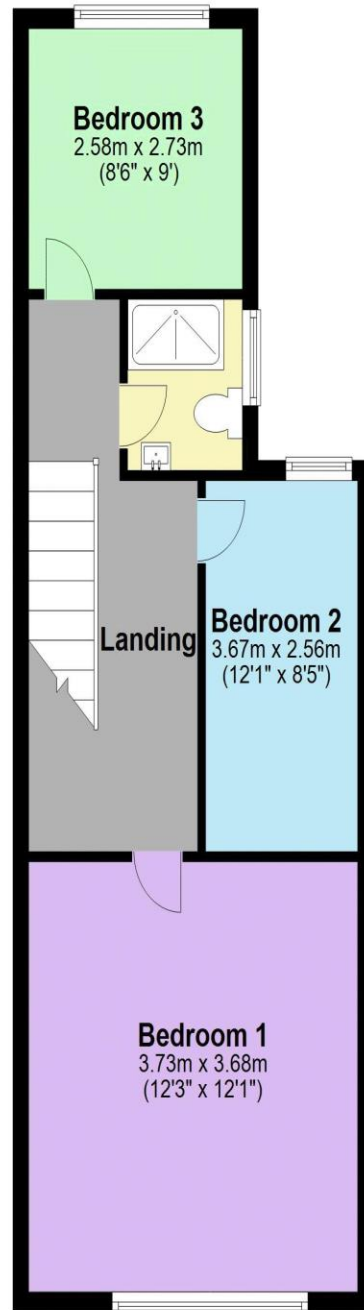
**LOCAL AUTHORITY: LONDON BOROUGH OF HARROW**

**ENERGY EFFICIENCY RATING: TBC**



**Ground Floor**

Approx. 43.9 sq. metres (472.7 sq. feet)



**First Floor**

Approx. 49.1 sq. metres (528.4 sq. feet)

Total area: approx. 93.0 sq. metres (1001.0 sq. feet)



We have not sought to verify the legal title of the property, the existence of planning permissions and/or building regulation approvals and have been unable to check the working condition of any services or appliances.

**Property layouts are for general guidance and are not drawn exactly to scale. Measurements are taken at the widest points and bays, alcoves, wardrobes etc. may not be shown.**