

LOWICK ROAD, HARROW



Three Bedroom Semi Detached House

Guide Price £800,000-£850,000

Description

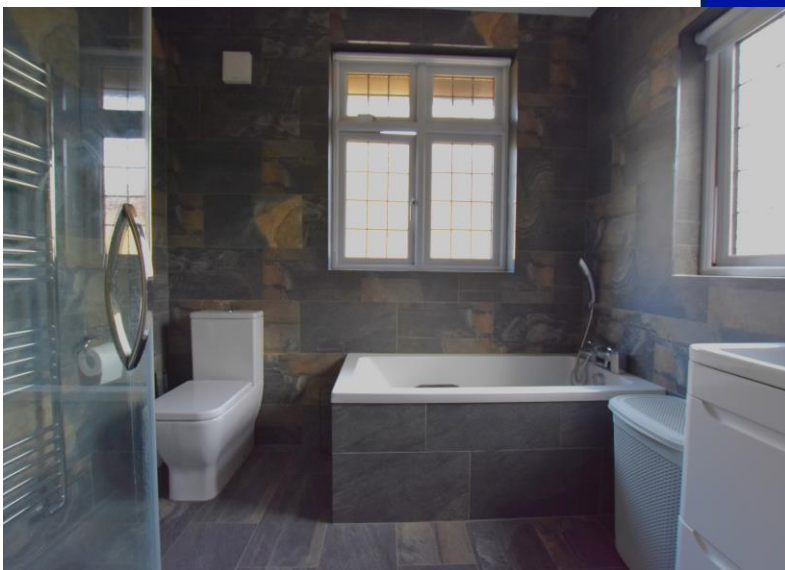
Guide Price £800,000 to £850,000. Serious buyers only are being invited to view A SPACIOUS SEMI DETACHED HOUSE WITH OWN DRIVEWAY well positioned for local shopping and transport facilities with easy access to Harrow town centre and just minutes walk from Harrow Metropolitan Line Station and the Bakerloo/Silverlink Line station at Harrow & Wealdstone. The property offers generous accommodation including a huge kitchen/diner/family room across the back with garden aspect. Huge scope to extend further.



Location: If travelling down Harrow View towards Harrow, take the turning into Marlborough Hill, take 3rd right onto Rusland Park road and then the first right into Lowick Road.

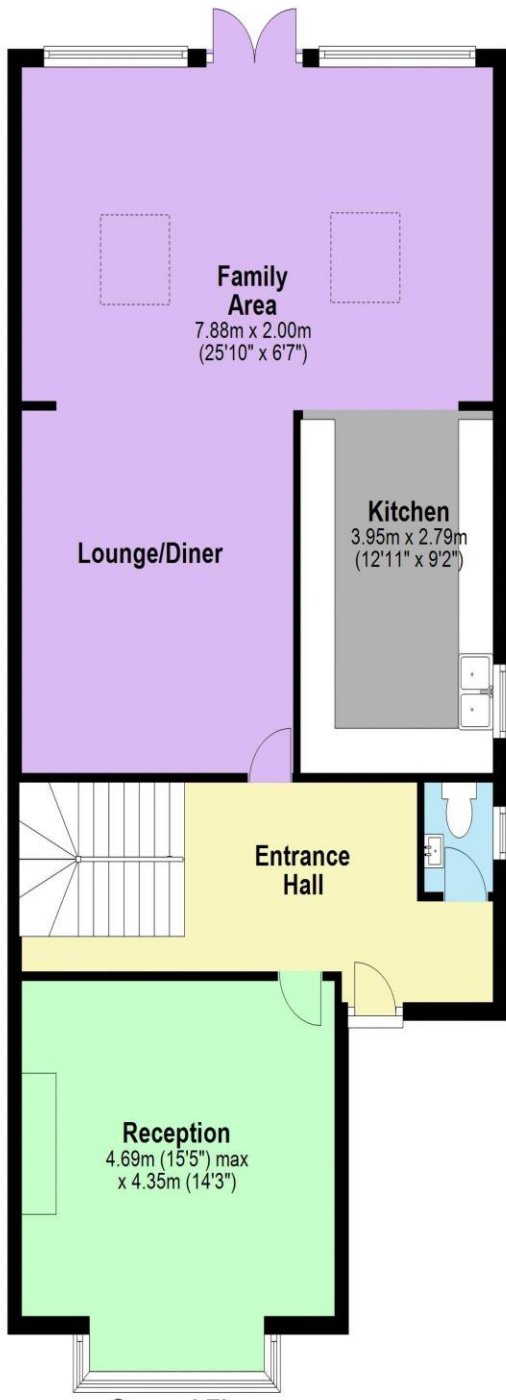


- *Spacious Three Bedroom Semi Detached House*
- *Garage*
- *Guest WC*
- *Few Mins Walk To Harrow & Wealdstone Station*
- *Own Driveway*
- *Open Plan Living/Kitchen/Dining/Family Area.*
- *Huge Scope To Extend Further*
- *Close Proximity To Harrow Town Centre*



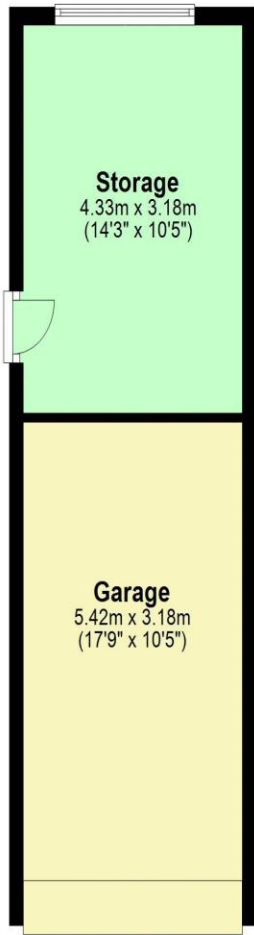
Additional Information

TENURE: FREEHOLD
 LOCAL AUTHORITY: LONDON BOROUGH OF HARROW
 ENERGY EFFICIENCY RATING: TBC



Ground Floor

Approx. 119.2 sq. metres (1283.0 sq. feet)



First Floor

Approx. 61.9 sq. metres (666.5 sq. feet)

Total area: approx. 181.1 sq. metres (1949.4 sq. feet)



We have not sought to verify the legal title of the property, the existence of planning permissions and/or building regulation approvals and have been unable to check the working condition of any services or appliances.

Property layouts are for general guidance and are not drawn exactly to scale. Measurements are taken at the widest points and bays, alcoves, wardrobes etc. may not be shown.