

## *MIDDLE WAY, HARROW WEALD*



*Three Bedroom Terraced House*

*Guide Price £550,000*



## Description

Guide Price £550,000 to £575,000. Robertson Phillips are pleased to be able to offer for sale this double fronted three bedroom terraced house which can be used as up to four bedroom if required. Located on a quiet residential road this house offers great potential to extend at ground level (stpp). The property is offered chain free and benefits from gas fired central heating, some double glazed windows, two good sized receptions (one could be used as a 4th bedroom) and a ground floor cloakroom. Great First Time or Buy to Let Investment.



**Location:** Middle Way is situated for fantastic transport links, which includes Harrow & Wealdstone Bakerloo/Mainline station, a number of bus routes available on your doorstep. Great schools Nearby are Whitefriars first and middle schools, Salvatorian College and Sacred Heart High School,



- *Three Bedroom Terraced House*
- *Quiet Residential Road*
- *Two Receptions*
- *Gas Central Heating & Double Glazed Windows*
- *Potential To Extend On Ground Level (STPP)*
- *Chain Free*
- *Guest WC*



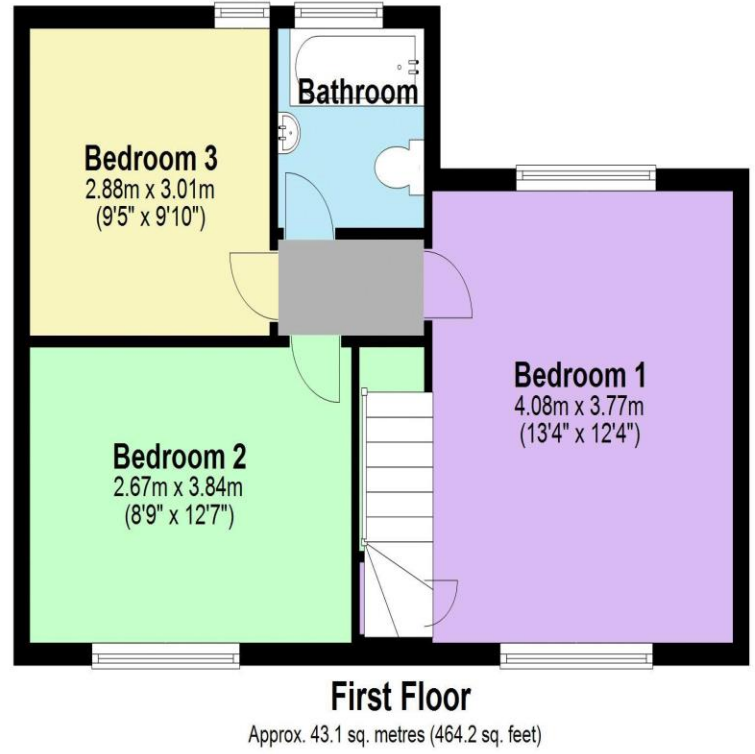
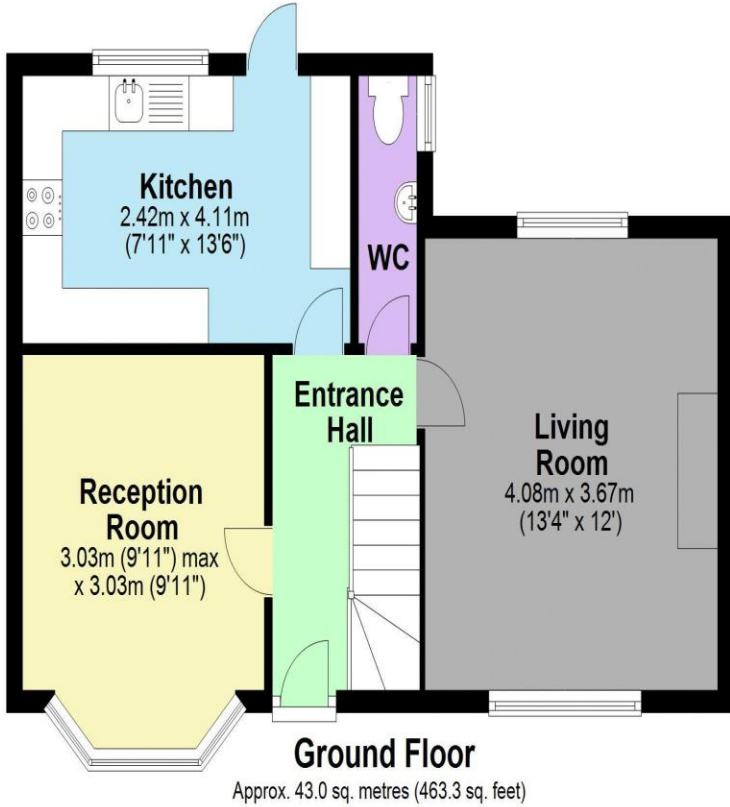
#### Additional Information

TENURE: FREEHOLD

LOCAL AUTHORITY: LONDON BOROUGH OF HARROW

ENERGY EFFICIENCY RATING: D





Total area: approx. 86.2 sq. metres (927.5 sq. feet)



We have not sought to verify the legal title of the property, the existence of planning permissions and/or building regulation approvals and have been unable to check the working condition of any services or appliances.

**Property layouts are for general guidance and are not drawn exactly to scale. Measurements are taken at the widest points and bays, alcoves, wardrobes etc. may not be shown.**