

***SOUTHFIELD PARK, NORTH HARROW***



***Three Bedroom Semi Detached House***

***Guide Price £750,000***

## *Description*

Robertson Phillips are pleased to be able to offer for sale the impressive three bedroom semi detached house with useable loft space located on one of North Harrows most desirable road popular for its diverse range of property types and styles. This particular semi-detached house is offered for sale with the benefits of gas fired central heating, double glazed windows, two separate reception rooms, three bedrooms at first floor level and a useable loft space with stairs from the first-floor landing and a Velux type window. Additional benefits include off street parking to the front and a garage to the rear accessed via a communal driveway to the side. No Upper Chain is also to be offered, and as such, an internal inspection comes highly advised.



***Location:*** The property is within 0.2 miles of North Harrows amenities and eateries, and further along is the tube station on the same parade. There are also numerous bus routes available.

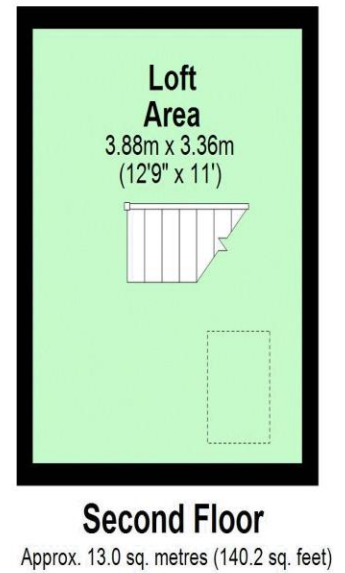
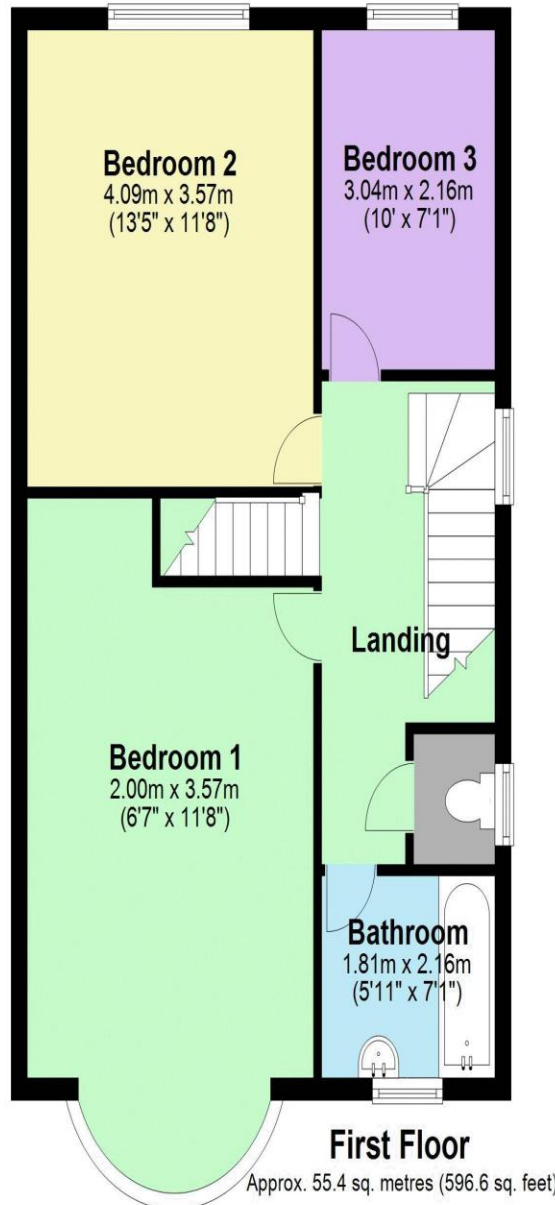
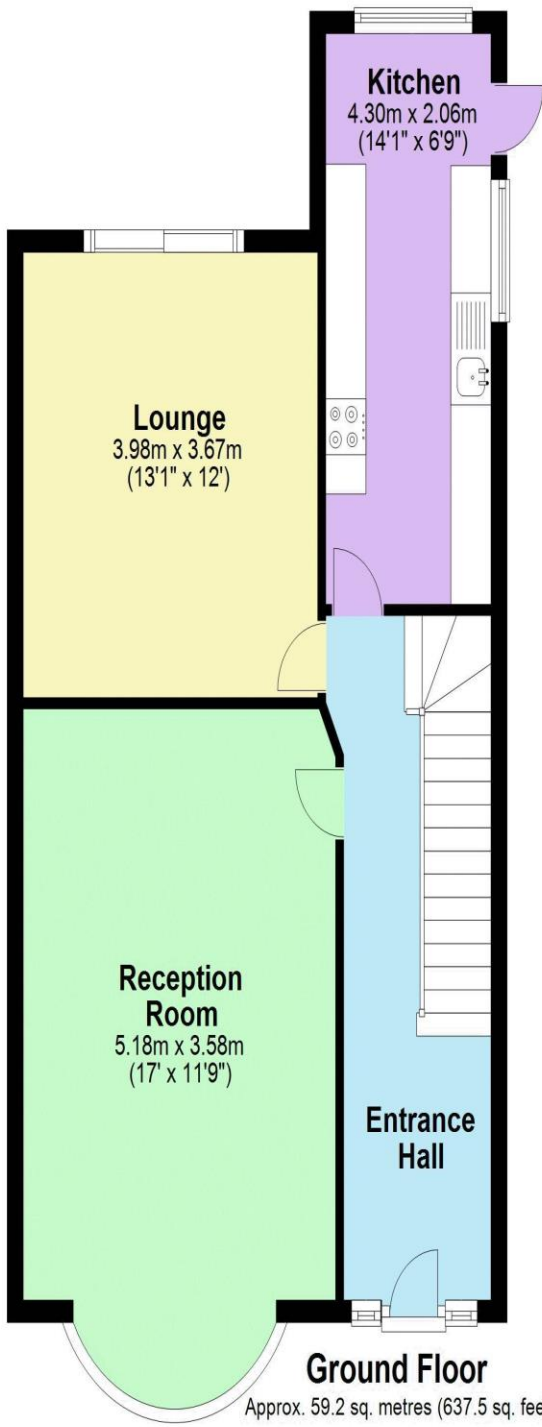


- *Three bedroom semi detached house plus useable loft room*
- *Gas fired central heating and double glazed windows*
- *Potential to extend (stpp)*
- *Favoured road within easy reach of facilities*
- *Off street parking and a garage to the rear*
- *No Upper Chain*



**Additional Information**

TENURE: FREEHOLD  
 LOCAL AUTHORITY: LONDON BOROUGH OF HARROW  
 ENERGY EFFICIENCY RATING: TBC



Total area: approx. 127.7 sq. metres (1374.2 sq. feet)



We have not sought to verify the legal title of the property, the existence of planning permissions and/or building regulation approvals and have been unable to check the working condition of any services or appliances.

Property layouts are for general guidance and are not drawn exactly to scale. Measurements are taken at the widest points and bays, alcoves, wardrobes etc. may not be shown.