



Sarah  
Mains...



**289 Rectory Road, Gateshead – NE8 4RS**

**£150,000 Leasehold**

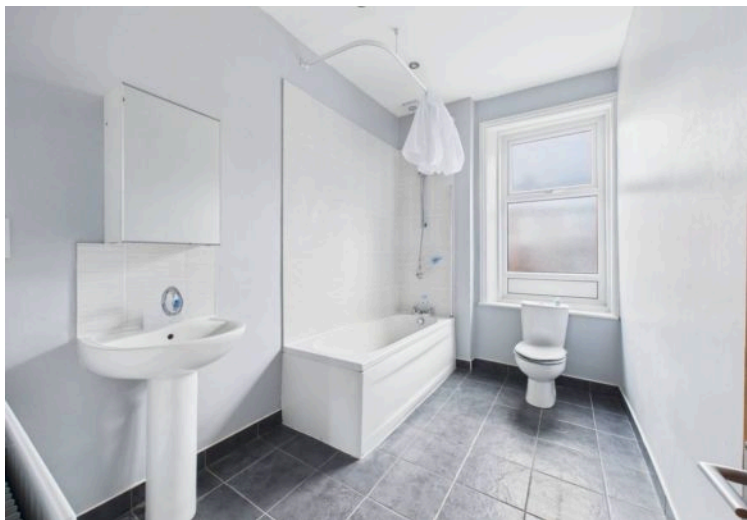
**sarahmains.com**















Council Tax band: A

Tenure: Leasehold

EPC Energy Efficiency Rating: D

EPC Environmental Impact Rating: E

- Four Bedroom Maisonette
- Popular Location
- Leasehold
- Council Tax Band A
- EPC Rating D



### Open Plan Lounge/Kitchen

25' 0" x 13' 5" (7.62m x 4.11m)

### Bedroom One

14' 4" x 14' 2" (4.37m x 4.32m)

### Bedroom Two

8' 2" x 7' 11" (2.50m x 2.41m)

### Bathroom

### Second Floor

### Bedroom Three

22' 3" x 9' 5" (6.78m x 2.87m)



You can include any text here. The text can be modified upon generating your brochure.





You can include any text here. The text can be modified upon generating your brochure.

**Newcastle**

0191 240 3333  
js@sarahmains.com

**Low Fell**

0191 487 8855  
lfs@sarahmains.com

**Whickham**

0191 488 9999  
ws@sarahmains.com

**sarahmains.com**