



7 Elizabeth Road, London, N15 5LG

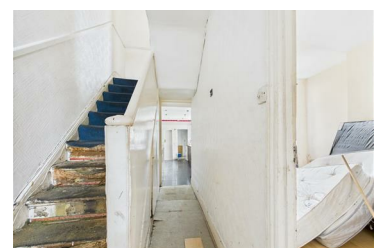
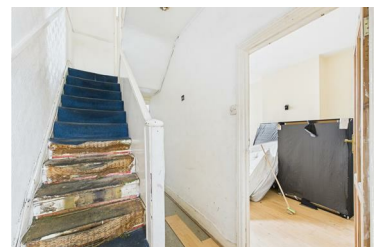
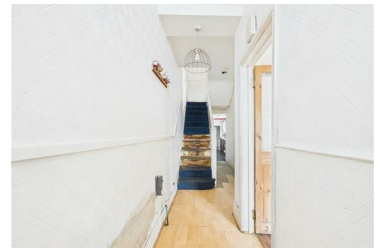
£575,000



Set within a highly sought-after location in N15, this period terraced house presents an exceptional opportunity for those looking to create a bespoke home. Offering immense potential throughout, the property is in need of full refurbishment, making it an ideal project for buyers with vision and a sympathetic eye for restoration.

The spacious accommodation includes three generously proportioned double bedrooms, two separate reception rooms, a ground floor bathroom, and an additional separate WC. The property benefits from an extended kitchen area, providing further scope for redesign and enhancement. To the rear, a private garden awaits landscaping, offering the chance to create a tranquil outdoor retreat tailored to your personal taste.

This property which, once restored, could be beautifully brought back to life. Whether you're a homeowner looking to put down roots or an investor



- CHAIN FREE SALE
- 3 DOUBLE BEDROOMS
- GROUND FLOOR BATHROOM
- EXTENDED KITCHEN
- CLOSE TO TOTTENHAM HIGH ROAD
- IN NEED OF MODERNISATION
- 2 RECEPTION ROOMS
- MINUTES FROM SEVEN SISTERS VICTORIA LINE
- TREE LINED RESIDENTIAL SIDE TURNING
- EXCELLENT LOCATION