



Bedivere Road
Ifield, West Sussex RH11 0FY

£230,000

Bedivere Road, Ifield, West Sussex RH11 0FY

Astons are pleased to offer this stylish modern one bedroom ground floor apartment built by Barratt Homes in 2018. The property is ideally situated close to local shops and Ifield train station which offers services to London. The flat benefits from a spacious open plan living room with a fitted kitchen with integrated appliances, a good sized patio terrace with space for a table and chairs and gas radiator heating. Outside there is an allocated parking space and communal grounds. The property has approximately 992 years remaining on the lease and is EPC rating B.

Hallway

Front door, security entry phone system, radiator, double glazed floor to ceiling window, large storage cupboard, thermostat, doors to:

Lounge/Diner/Kitchen

Double glazed floor to ceiling window to the front, double glazed window to the side, double glazed door to the patio terrace. Kitchen Area-range of base and eye level white fronted units with work surfaces over, under unit lighting and matching splashbacks, stainless steel inset sink with a mixer tap and drainer, built in stainless steel oven with a four ring gas hob over, tiled splashbacks and stainless steel extractor hood above, integrated fridge/freezer, dishwasher and washing machine, unit housing the gas fired combination boiler.

Terrace

There is a paved patio terrace to the front of the property with space for a small table and chairs.

Bedroom

Double glazed floor to ceiling window to the front, radiator, thermostat.

Bathroom

White suite comprising a panel enclosed bath with a mixer tap and separate mixer shower unit, W.C. pedestal hand basin with a mixer tap, part tiled walls, wood effect flooring, obscure double glazed window, extractor fan, radiator.

Parking

There is an allocated parking space to the front of the building and visitor spaces.

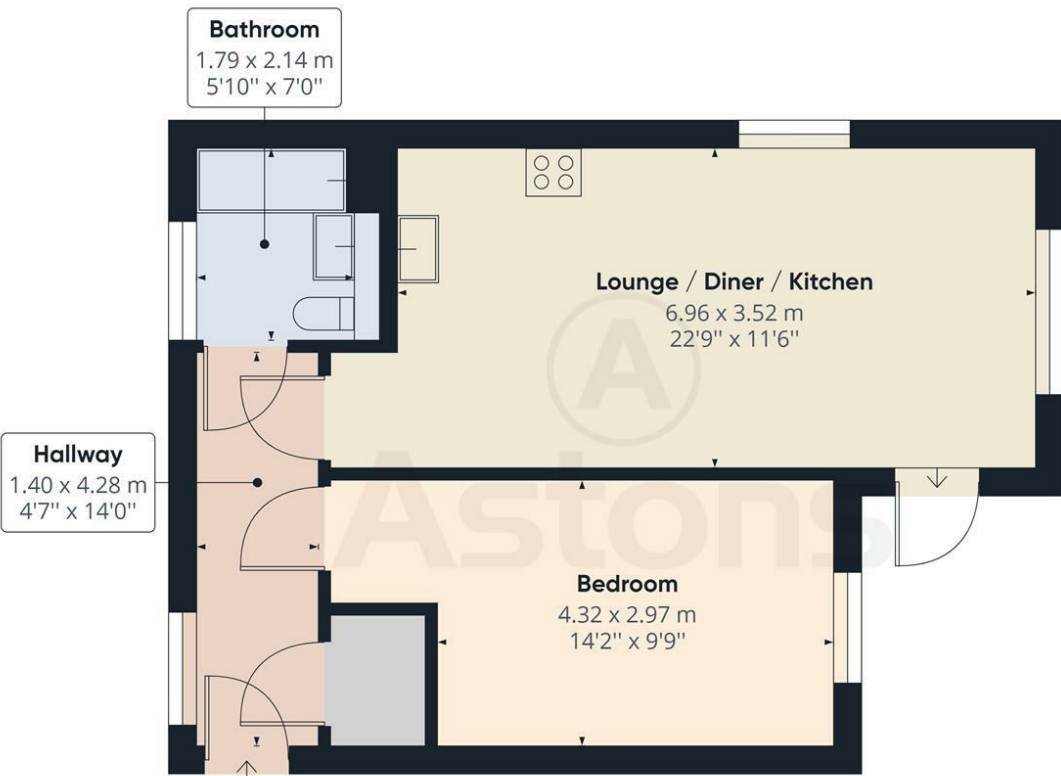
Communal Grounds

There are lawned areas to the front, side and rear of the building, with feature shrub borders.

Council Tax Band

The property is council tax band B.





Approximate total area⁽¹⁾
570.33 ft²
52.99 m²

(1) Excluding balconies and terraces

While every attempt has been made to ensure accuracy, all measurements are approximate, not to scale. This floor plan is for illustrative purposes only.

GIRAFFE360

