

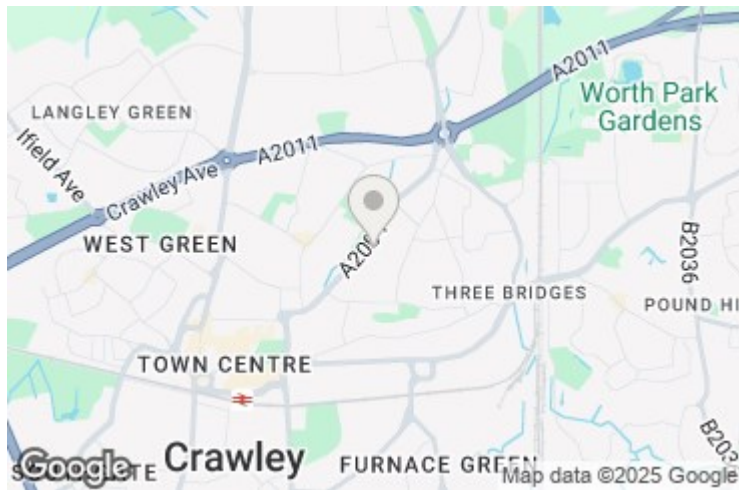


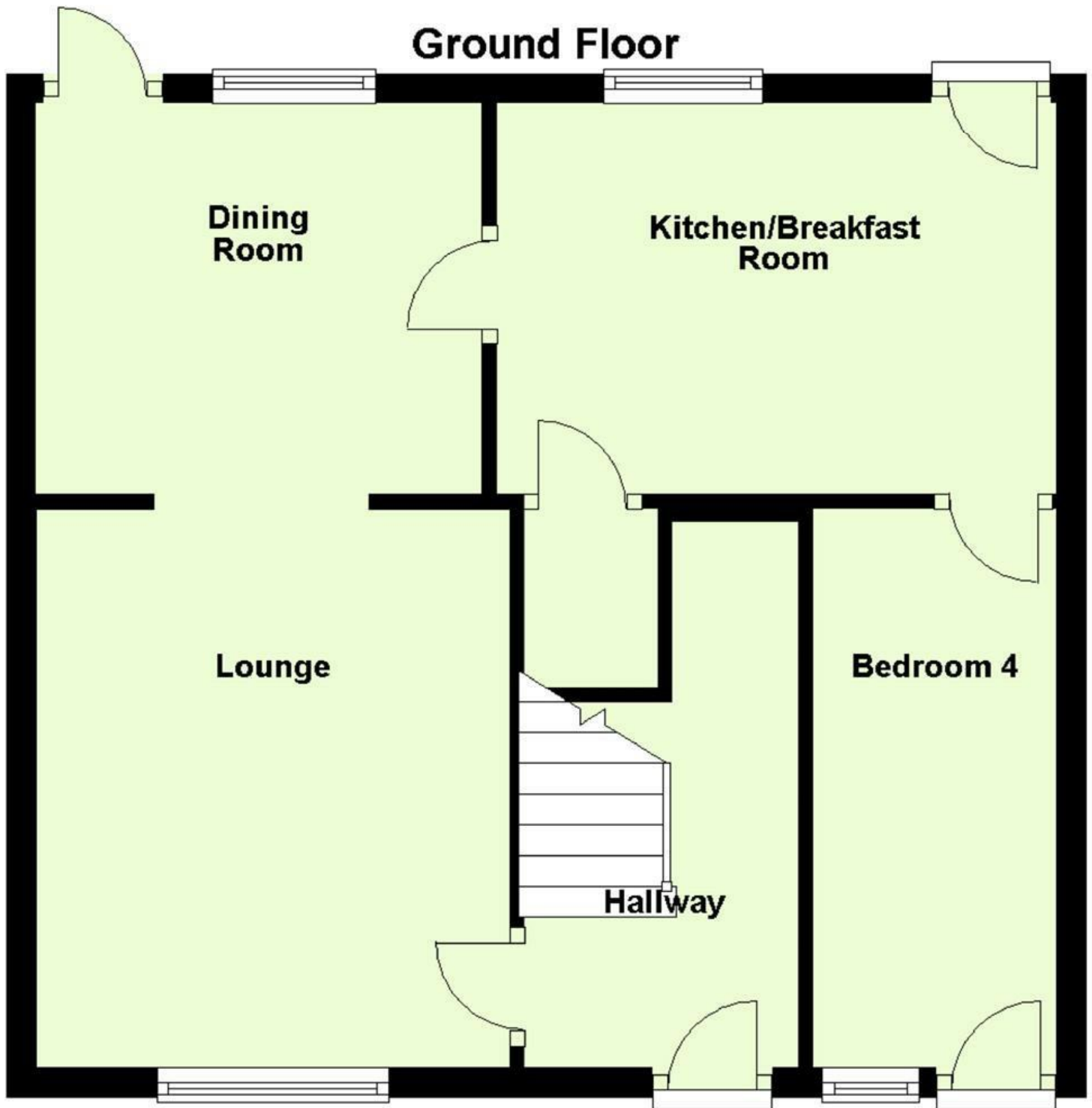
**Early Commons**  
**Three Bridges, West Sussex RH10 1RF**  
**£1,650 PCM**

\* Three bedroom terraced house \* Ideally situated in a cul de sac close to the town centre and transport links  
\* New flooring throughout \* Brand new kitchen \* Available Immediately \*

## Early Commons, Three Bridges, West Sussex RH10 1RF

Members of the property ombudsman  
Members of CMP for client money protection  
holding deposit equivalent of one week rent  
security deposit equivalent 5 weeks rent





Energy Efficiency Rating			
	Current	Potential	
Very energy efficient - lower running costs			
(92 plus) <b>A</b>			
(81-91) <b>B</b>			
(69-80) <b>C</b>			
(55-68) <b>D</b>			
(39-54) <b>E</b>			
(21-38) <b>F</b>			
(1-20) <b>G</b>			
Not energy efficient - higher running costs			
<b>England &amp; Wales</b>	EU Directive 2002/91/EC		

Environmental Impact (CO <sub>2</sub> ) Rating			
	Current	Potential	
Very environmentally friendly - lower CO <sub>2</sub> emissions			
(92 plus) <b>A</b>			
(81-91) <b>B</b>			
(69-80) <b>C</b>			
(55-68) <b>D</b>			
(39-54) <b>E</b>			
(21-38) <b>F</b>			
(1-20) <b>G</b>			
Not environmentally friendly - higher CO <sub>2</sub> emissions			
<b>England &amp; Wales</b>	EU Directive 2002/91/EC		