



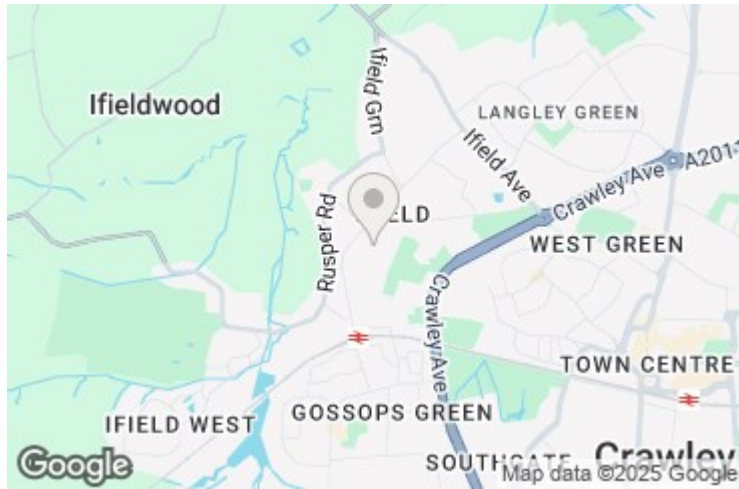
**Bedivere Road
Ifield, West Sussex RH11 0FY**

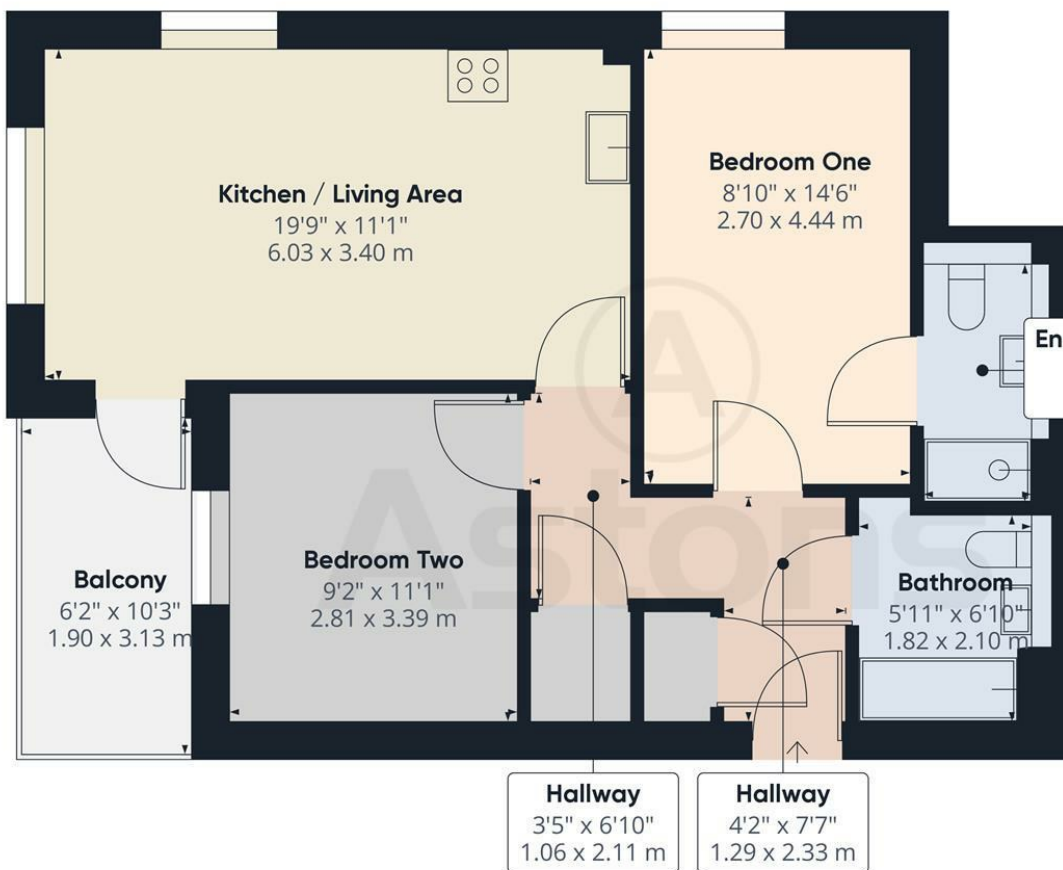
£1,450

Astons are pleased to offer this stylish modern two bedroom first floor apartment. The property is ideally situated close to local shops and Ifield train station which offers services to London. The flat benefits from a spacious open plan living room with a fitted kitchen with integrated appliances, a good sized balcony with space for a table and chairs and gas radiator heating. Outside there are two allocated parking spaces and communal grounds. Available 7th July *

Bedivere Road, Ifield, West Sussex RH11 0FY

Members of the property ombudsman
Members of CMP for client money protection
holding deposit equivalent of one week rent
security deposit equivalent 5 weeks rent
reservation deposit equivalent of one weeks rent





Approximate total area⁽¹⁾
640.4 ft²
59.5 m²

(1) Excluding balconies and terraces

While every attempt has been made to ensure accuracy, all measurements are approximate, not to scale. This floor plan is for illustrative purposes only.

GIRAFFE360

Energy Efficiency Rating		
	Current	Potential
Very energy efficient - lower running costs		
(92 plus) A		
(81-91) B		
(69-80) C		
(55-68) D		
(39-54) E		
(21-38) F		
(1-20) G		
Not energy efficient - higher running costs		
England & Wales	EU Directive 2002/91/EC	

Environmental Impact (CO ₂) Rating		
	Current	Potential
Very environmentally friendly - lower CO ₂ emissions		
(92 plus) A		
(81-91) B		
(69-80) C		
(55-68) D		
(39-54) E		
(21-38) F		
(1-20) G		
Not environmentally friendly - higher CO ₂ emissions		
England & Wales	EU Directive 2002/91/EC	