



Winter Gardens
Southgate, West Sussex RH11 8RB

£1,450

A two bedroom ground floor maisonette which is ideally situated in a cul de sac close to the town centre, local amenities and Crawley train station. The property benefits from a personal front door, light and spacious accommodation, gas radiator heating with a recently replaced gas fired boiler, double glazed windows and allocated parking. The property has an open plan garden area to the front. * Available 22nd May *

Winter Gardens, Southgate, West Sussex RH11 8RB

Hallway

Personal front door, radiator, storage cupboard, doors to:

Bedroom Two

Double glazed window to the front, radiator.

Bedroom One

Double glazed window to the side, radiator, built in wardrobes.

Bathroom

White suite comprising a panel enclosed bath with a mixer tap and shower attachment, pedestal hand basin, W.C, part tiled walls, radiator, obscure double glazed window, extractor fan, recessed down lighters.

Lounge

Double glazed window to the front, radiator, fireplace (not operational), open through to:

Kitchen

Range of base and eye level units with work surfaces over and tiled splash backs, inset stainless steel sink with a mixer tap and drainer, built in Bosch oven with a four ring gas hob over, space for a washing machine, fridge and freezer, double glazed window to the rear, radiator.

Allocated Parking

There is an allocated parking space located to the rear of the property.

Garden

To the front of the property there is an open plan lawned area.

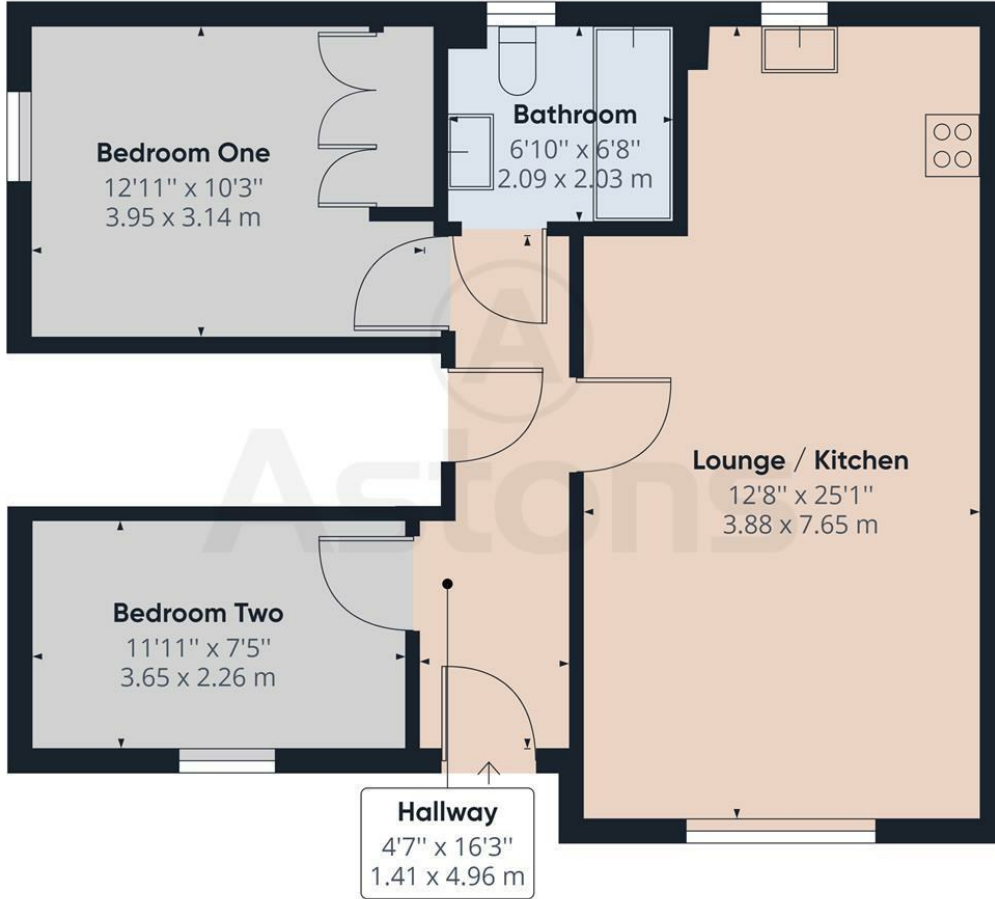
Members of the property ombudsman

Members of CMP for client money protection

holding deposit equivalent of one week rent

security deposit equivalent 5 weeks rent





Approximate total area⁽¹⁾
639.30 ft²
59.39 m²

(1) Excluding balconies and terraces

While every attempt has been made to ensure accuracy, all measurements are approximate, not to scale. This floor plan is for illustrative purposes only.

GIRAFFE360

