



Somerley Drive
Pound Hill, West Sussex RH10 3SW
£1,850 PCM

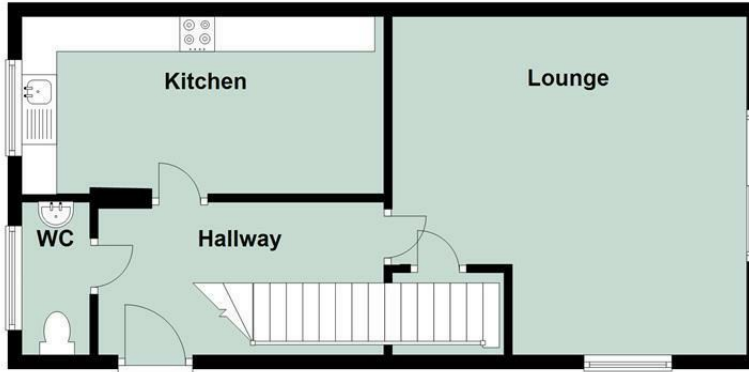
* Delightful four bedroom link detached house * en-suite to master bedroom * driveway for up to two cars * garage * downstairs cloakroom * kitchen dining space * bus links to Gatwick Airport * viewing comes highly recommended * Available from 30th July *

Somerley Drive, Pound Hill, West Sussex RH10 3SW

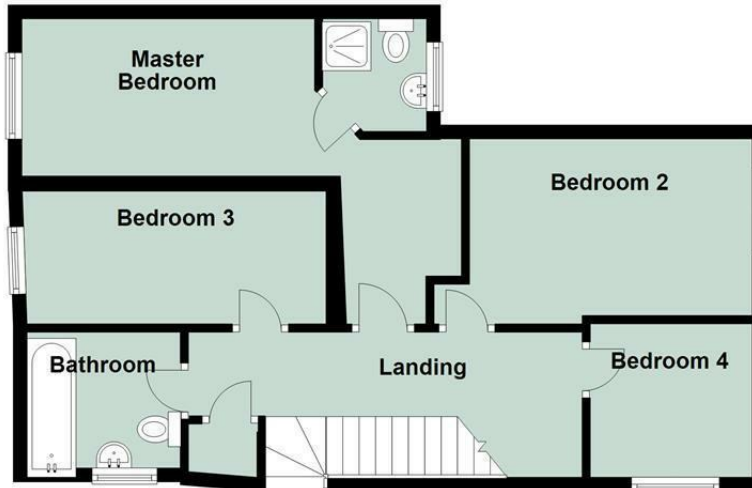
Members of the property ombudsman
Members of CMP for client money protection
holding deposit equivalent of one week rent
security deposit equivalent 5 weeks rent
reservation deposit equivalent of one weeks rent



Ground Floor



First Floor



Floor Shapes and Sizes are not exact and merely an indication of layout
Plan produced using PlanUp.

Energy Efficiency Rating		Current	Potential
Very energy efficient - lower running costs			
(92 plus) A			94
(81-91) B		83	
(69-80) C			
(55-68) D			
(39-54) E			
(21-38) F			
(1-20) G			
Not energy efficient - higher running costs			
England & Wales		EU Directive 2002/91/EC	

Environmental Impact (CO ₂) Rating		Current	Potential
Very environmentally friendly - lower CO ₂ emissions			
(92 plus) A			
(81-91) B			
(69-80) C			
(55-68) D			
(39-54) E			
(21-38) F			
(1-20) G			
Not environmentally friendly - higher CO ₂ emissions			
England & Wales		EU Directive 2002/91/EC	