



Taylifers, Harlow, CM19 5RG

Offers In Excess Of £400,000 Freehold

** KINGS GROUP HARLOW ARE DELIGHTED TO OFFER THIS WELL PRESENTED, FIVE BEDROOM, END OF TERRACE HOUSE FOR SALE IN TAYLIFERS, HARLOW **

OPEN DAY FRIDAY 23RD AUGUST

Welcome to this charming five-bedroom end of terrace house located in the sought-after area of Taylifers, Harlow. This property boasts a spacious entrance hallway that leads to a well-presented interior, perfect for a growing family.

As you step inside, you'll be greeted by a warm and inviting atmosphere, with one reception room ideal for entertaining guests or relaxing with your loved ones. The property features two bathrooms, including a convenient downstairs cloakroom.

One of the highlights of this lovely home is the loft conversion, providing an additional two double bedrooms. The allocated parking to the rear of the property offers convenience and peace of mind for residents.

Taylifers, Harlow, CM19 5RG

Cloakroom

Double glazed window to front aspect, low level W.C. wash basin with vanity under unit, radiator

Lounge/Diner 17'7 x 15'5 (5.36m x 4.70m)

Double glazed window to rear aspect, double glazed patio doors to rear aspect, wood flooring, double radiator, power points

Kitchen 14'4 x 9'5 (4.37m x 2.87m)

Double glazed window to front aspect, a range of base and wall units with roll top work surfaces, extractor fan, space for fridge/freezer, plumbing for washing machine, tiled flooring, power points

Bedroom One 17'5 x 10'11 (5.31m x 3.33m)

Double glazed window to front and side aspect, spotlights, wooden flooring, radiator, power points

Bedroom Two 16 x 9'8 (4.88m x 2.95m)

Double glazed window to front aspect, spotlights, wooden flooring, radiator, power points

Bedroom Three 11 x 10'6 (3.35m x 3.20m)

Double glazed window to rear aspect, wooden flooring, radiator, power points

Bedroom Four 14'3 x 6'8 (4.34m x 2.03m)

Double glazed window to rear aspect, spotlights, built in wardrobes, laminate flooring, power points, radiator

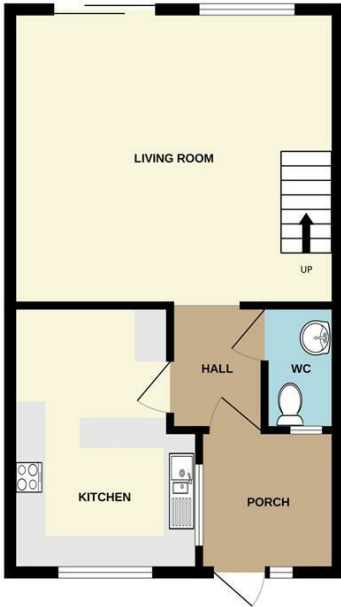
Bathroom

Double glazed opaque window to front aspect, panel enclosed bath with shower over bath, heated towel rail, vanity unit with wash basin, spotlights, tiled walls, low level W.C

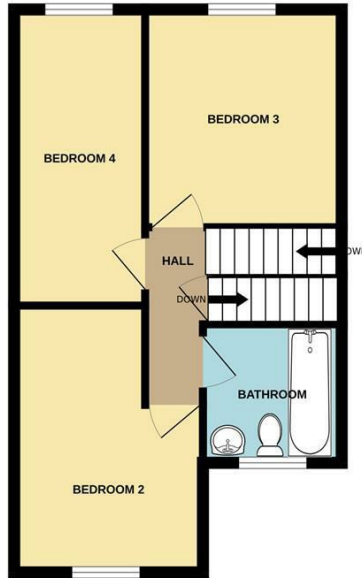
Bedroom Five 10'7 x 8'7 (3.23m x 2.62m)

Double glazed window to rear aspect, skylights, spotlights, wooden flooring, radiator

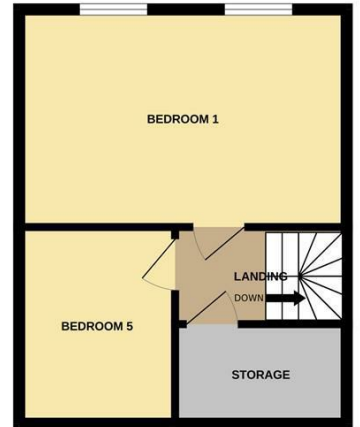
GROUND FLOOR



1ST FLOOR



2ND FLOOR



Whilst every attempt has been made to ensure the accuracy of the floorplan contained here, measurements of doors, windows, rooms and any other items are approximate and no responsibility is taken for any error, omission or mis-statement. This plan is for illustrative purposes only and should be used as such by any prospective purchaser. The services, systems and appliances shown have not been tested and no guarantee as to their operability or efficiency can be given.
Made with Metropix ©2024

