



Wharley Hook, Harlow, CM18 7DN Offers In The Region Of £450,000 Freehold

**** KINGS GROUP HARLOW ARE DELIGHTED TO OFFER THIS WELL PRESENTED, EXTENDED, FOUR/FIVE BEDROOM SEMI-DETACHED HOUSE IN WHARLEY HOOK, HARLOW ****

This delightful house boasts a spacious layout with two reception rooms, perfect for entertaining guests or relaxing with the family. With four bedrooms, there is ample space for a growing family or for those who enjoy having extra rooms for guests or hobbies. The addition of an annexe to the side provides versatility, whether it be for accommodating guests, or working from home.

One of the standout features of this property is the extension to the rear and side, providing even more living space and enhancing the overall appeal of the house.

Step outside into the lovely garden and discover a tranquil pond, adding a touch of serenity to the outdoor space. The large driveway is a practical addition, offering ample parking space for multiple vehicles, a luxury that is highly valued in today's busy world.

Don't miss the opportunity to make this house your home. With its desirable location, generous living spaces, and unique features, this property in Wharley Hook, Harlow, is sure to capture the hearts of those seeking a comfortable and versatile living space.

To avoid disappointment please call us to arrange your viewing now on 01279 433 033.

Wharley Hook, Harlow, CM18 7DN

Entrance Hallway

Carpeted, coved ceiling

Downstairs Cloakroom 5'04 x 4'39 (1.63m x 1.22m)

Double glazed opaque window to front aspect, single radiator, tiled splash backs, tiled flooring, pedestal style wash basin, low level W.C.

Lounge 22'26 x 11'97 (6.71m x 3.35m)

Coved ceiling, carpeted, double radiator, feature fire place, storage cupboard, phone point, TV aerial point, power points

Dining Room 14'27 x 13'71 (4.27m x 3.96m)

Double glazed patio doors to rear aspect leading to rear garden, laminate flooring, air conditioning, single radiator, power points

Utility 12'81 x 7'49 (3.66m x 2.13m)

Opening to side aspect, coved ceiling, laminate flooring, a range of base and wall units with roll top work surfaces, breakfast bar, plumbing for washing machine, power points, space for fridge/freezer, power points

Kitchen 16'2 x 8'02 (4.93m x 2.49m)

Double glazed window to rear aspect, double glazed French door to rear aspect leading to rear garden, tiled walls, laminate flooring, a range of base and wall units with roll top work surfaces, space for cooker, extractor fan, sink with single drainer unit, space for fridge/freezer, coved ceiling, power points

Annexe Room 24'52 x 7'88 (7.32m x 2.13m)

Double glazed opaque window to front and rear aspect, velux window, double radiator, TV aerial point, power points, carpeted

Ground Floor Bedroom 13'01 x 9'88 (3.99m x 2.74m)

Double glazed bay window to front aspect, coved ceiling, single radiator, carpeted, TV aerial point, power points, feature fireplace

First Floor Landing

Carpeted, storage cupboard

Bedroom One 11'95 x 11'35 (3.35m x 3.35m)

Double glazed window to front aspect, coved ceiling, carpeted, single radiator, power points

Bedroom Two 13'09 x 9'96 (4.19m x 2.74m)

Double glazed window to rear aspect, coved ceiling, carpeted, single radiator, fitted wardrobes, TV aerial point, power points

Bedroom Three 8'99 x 6'62 (2.44m x 1.83m)

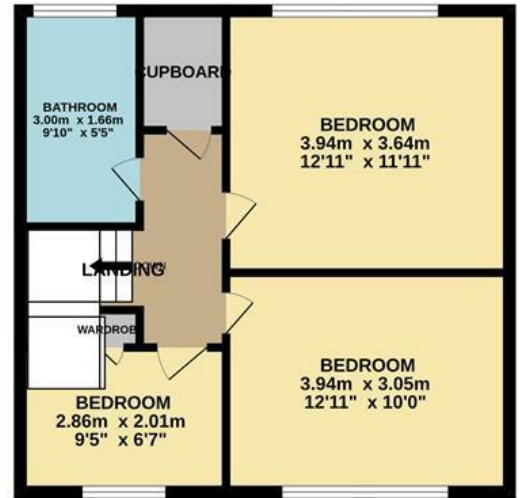
Double glazed window to front aspect, coved ceiling, single radiator, laminate flooring, built in storage cupboard, power points

Family Bathroom 9'88 x 5'54 (2.74m x 1.52m)

Double glazed opaque window to rear aspect, coved textured ceiling, spotlights, tiled splash backs, vinyl flooring, panel enclosed bath with mixer tap and shower attachment, wash basin with mixer tap and vanity under unit, low level W.C. walk in double shower unit with thermostatically controlled shower

GROUND FLOOR
107.1 sq.m. (1153 sq.ft.) approx.

1ST FLOOR
45.5 sq.m. (490 sq.ft.) approx.



WHARLEY HOOK

TOTAL FLOOR AREA : 152.6 sq.m. (1643 sq.ft.) approx.

Whilst every attempt has been made to ensure the accuracy of the floorplan contained here, measurements of doors, windows, rooms and any other items are approximate and no responsibility is taken for any error, omission or mis-statement. This plan is for illustrative purposes only and should be used as such by any prospective purchaser. The services, systems and appliances shown have not been tested and no guarantee as to their operability or efficiency can be given.
Made with Metropix ©2024



Associated Offices in London, Essex and Hertfordshire

Kings Head Office Tudor Lodge, Burton Lane, Goffs Oak, Hertfordshire EN7 6SY Tel: 01707-872000

