



www.kings-group.net

186 Hertford Road
Enfield Highway EN3 5AZ
Tel: 020 8805 5959

King Edwards Road, Enfield, EN3 7DA
Offers In The Region Of £409,995

- Two/Three bedroom end of terrace house
- Offered to the market chain free
- Includes both front and rear gardens
- Attractive investment opportunity
- Close to all local shops and amenities

A fantastic opportunity to acquire this two/three-bedroom end of terrace house, ideally located in the highly sought-after Ponders End area. Offered to the market chain free, this property is perfect for first-time buyers or investors alike, with a potential rental income of approximately £1,850 PCM.

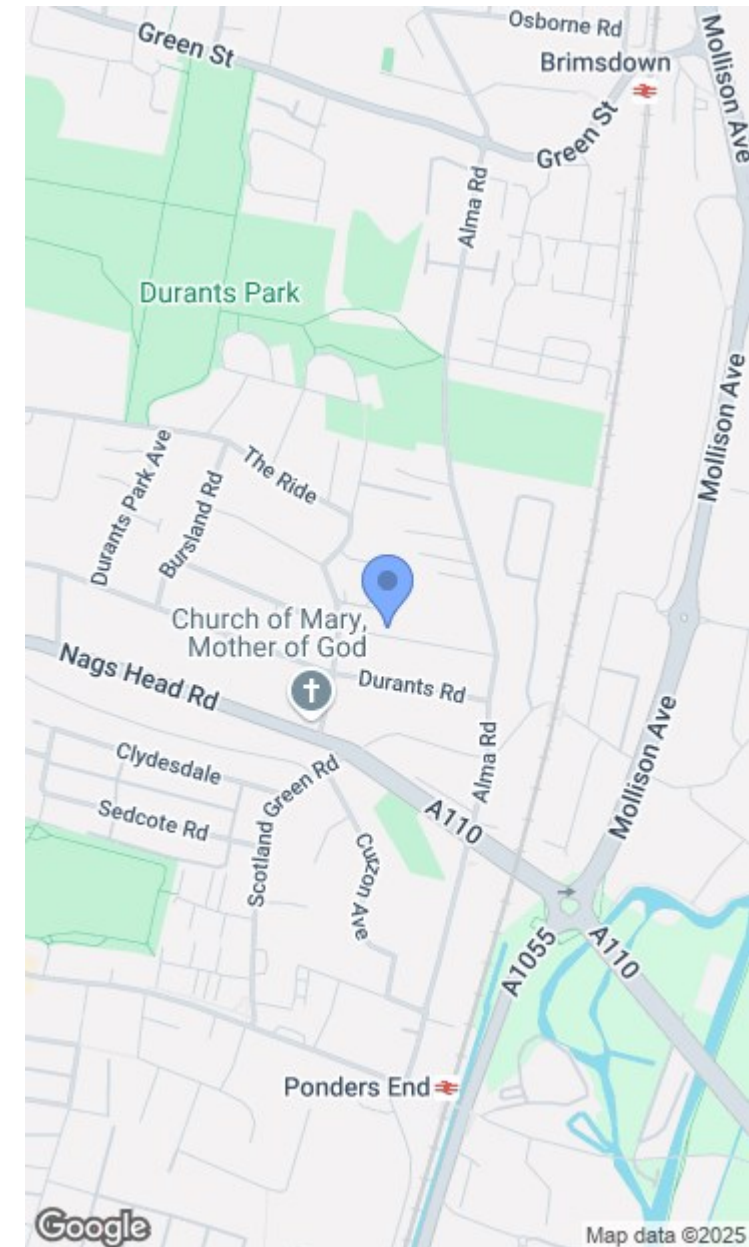
The home features two reception rooms/dining area providing versatile living and dining space, along with both front and rear gardens—ideal for families, entertaining, or those simply seeking outdoor space. The property offers excellent scope for personalisation and potential to add value, making it an attractive proposition for buyers looking to make a home their own.

Commuters will appreciate the property's excellent transport links, with both Ponders End and Southbury stations within easy reach. From here, you can enjoy direct services to Tottenham Hale, connecting to the Victoria Line, as well as fast access to London Liverpool Street—making travel into Central London quick and convenient.

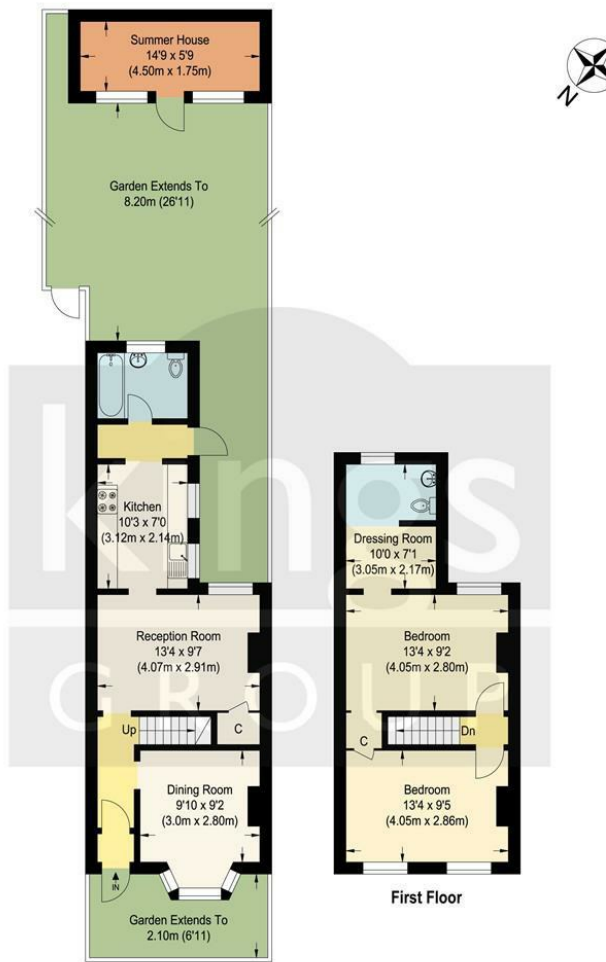
Set in a popular residential area with a strong community feel, this property combines comfort, convenience, and potential. Early viewing is highly recommended.

Freehold
Standard Construction Brick/Tiled
Low Flood Risk
Council Tax Band C
EPC Awaited

- Situated in the sought-after Ponders End location
- Features two spacious reception rooms
- Ideal purchase for first-time buyers
- Potential rental income of £1,850 PCM
- Great access into both Tottenham Hale & London Liverpool Street







Ground Floor

First Floor

King Edwards Road, EN3

Approximate Gross Internal Floor Area : 76.60 sq m / 824.51 sq ft
(Excluding Outbuilding)

Outbuilding Area : 7.90 sq m / 85.03 sq ft

Illustration for identification purposes only, measurements are approximate, not to scale.

