



96 Beaconsfield Road, Enfield Highway
£379,950 Freehold



96 Beaconsfield Road, Enfield Highway

186 Hertford Road, Enfield Highway,
Middlesex, EN3 5AZ

020 8805 5959
www.kings-group.net

- Three Bedroom Semi Detached House
- An ideal Family home or an Investment Opportunity
- Front & Rear Gardens
- First Floor Family Bathroom
- Gas Central Heating
- Potential rental income of £23,000-£24,000PA
- Close Proximity to local shops & Amenities

commuters.

All services and appliances have not and will not be tested.

Freehold
Chain Free

KINGS GROUP offer this three-bedroom Victorian semi-detached house. Located in the Enfield Lock location the property boasts a spacious and versatile layout, including a generously sized three-lounge/dining room, perfect for family gatherings and entertaining.

The house features three well-proportioned bedrooms, ideal for growing families, along with a first-floor bathroom. Outside, you'll find both front and rear gardens, providing plenty of outdoor space for relaxation or further development.

While the property does require modernisation, its classic Victorian features and structure provide a great canvas for anyone eager to renovate and add value. With some care and attention, this house has the potential to become a stunning family home or an investment opportunity.

Conveniently situated close to local shops, schools, and other amenities, the property also benefits from excellent transport links. Enfield Lock train station is just a short walk away, offering direct services to Tottenham Hale and London Liverpool Street, making this an ideal choice for



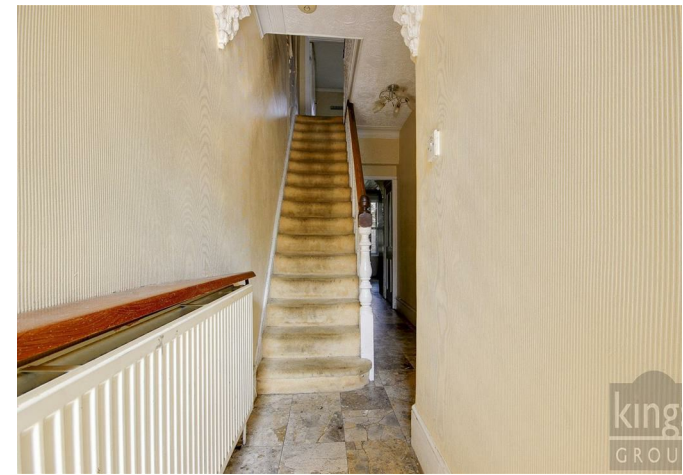
Ground Floor

First Floor

Beaconsfield Road, EN3

Approximate Gross Internal Floor Area : 97.20 sq m / 1046.25 sq ft

Illustration for identification purposes only, measurements are approximate, not to scale.



THE PROPERTY MISDESCRIPTIONS ACT 1991. The agent has not tested any apparatus, equipment, fixtures or services and so cannot verify that they are in working order, or fit for the purpose. References to the Tenure of a property are based on information supplied by the vendor. The agent has not had sight of the Title documents. A buyer is advised to obtain verification from their Solicitor or Surveyor



186 Hertford Road, Enfield Highway,
Middlesex, EN3 5AZ

020 8805 5959

www.kings-group.net



Zoopla.co.uk



rightmove.co.uk
The UK's number one property website

