



24 Archibald Close, Enfield Highway
£265,000 Leasehold



24 Archibald Close, Enfield Highway

186 Hertford Road, Enfield Highway,
Middlesex, EN3 5AZ

020 8805 5959
www.kings-group.net

- KINGS GROUP ENFIELD HIGHWAY PRESENT
- A TWO BEDROOM ONE BATHROOM PROPERTY
- DOUBLE GLAZED WINDOWS
- GAS CENTRAL HEATING
- NEW BOILER SERVICE PRIOR TO COMPLETION OF SALE
- SITUATED ON THE SECOND FLOOR WITH A BALCONY
- RESIDENTS' PARKING AND SECURE VIDEO ENTRY SYSTEM
- LOW MAINTENANCE FEES AND NO GROUND RENT
- CLOSE PROXIMITY TO LOCAL AMENITIES AND STATION SERVING TOTTENHAM HALE AND LIVERPOOL STREET
- PRE-ARRANGED VIEWINGS AVAILABLE NOW

stations, both providing easy access to Liverpool Street, this house is perfect for commuters or those who enjoy exploring the city.

Lease 82 Years
Annual service charge including buildings insurance
£1,165.94
Annual ground rent £0
Council Band C
EPC Rating C

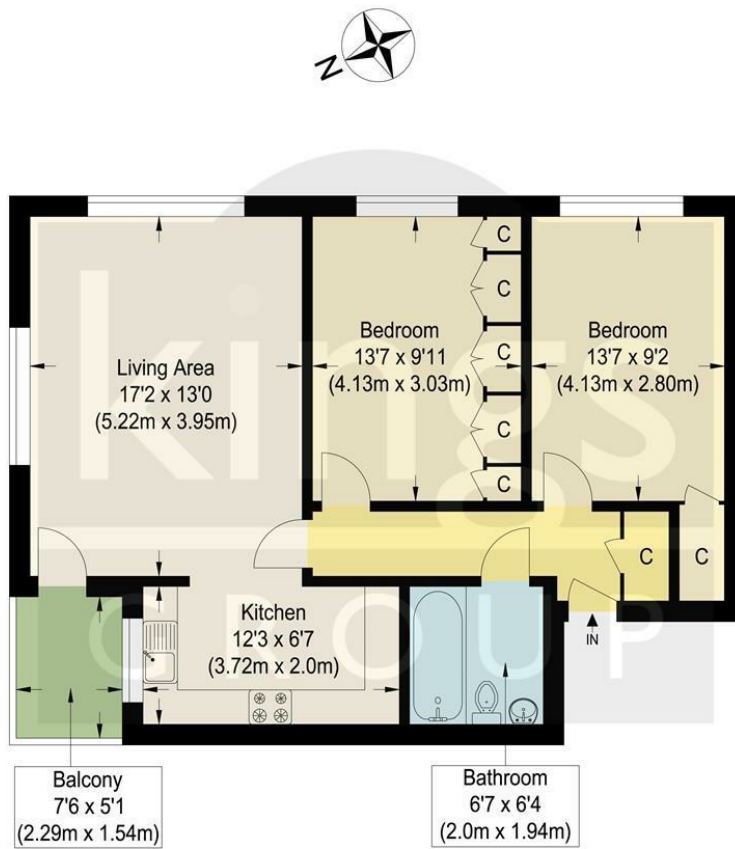
KINGS GROUP ENFIELD HIGHWAY

Nestled in the charming Archibald Close, Enfield, this delightful 2-bedroom property is a true gem waiting to be discovered. Built in 2012, this property boasts a very modern condition with UPVC windows that not only enhance its aesthetic appeal but also provide excellent insulation.

One of the standout features of this property is its low service charge fees, making it an attractive option for those looking for a hassle-free living experience. Additionally, there is a balcony and residents will benefit from a convenient car park, ensuring parking is never a concern.

The boiler of this property has been diligently serviced, with a new service scheduled prior to the completion of the sale, offering peace of mind to the new owners. Situated on the second floor, this property offers a sense of privacy and tranquillity while being in close proximity to local amenities, making daily errands a breeze.

Conveniently located near Turkey Street and Enfield Lock



Second Floor

Archibald Close

Approximate Gross Internal Floor Area : 66.10 sq m / 711.49 sq ft
 Illustration for identification purposes only, measurements are approximate, not to scale.





186 Hertford Road, Enfield Highway,
Middlesex, EN3 5AZ

020 8805 5959

www.kings-group.net



Zoopla.co.uk



rightmove.co.uk
The UK's number one property website

