



[www.kings-group.net](http://www.kings-group.net)

186 Hertford Road  
Enfield Highway EN3 5AZ  
Tel: 020 8805 5959

78 Tysoe Avenue, Enfield, EN3 6FE

£255,000



Notice Of Offer

Property Address: Flat 5 Spectrum House, 78 Tysoe Avenue Enfield, Middlesex, EN3 6FE

We advise that an offer has been made for the above property in the sum of £245,000. Any persons wishing to increase on this offer should notify the agents of their best offer prior to exchange of contracts.

Agents Address: Kings Group, 186 Hertford Road, Enfield, EN3 5AZ.

Agents Telephone Number: 0208 805 5959

**Entrance hallway**

With power point and storage cupboard.

**Reception room**

**18,2 \* 10,1 (5.49m,0.61m \* 3.05m,0.30m)**

With carpet, power point, electric heating, juliet balcony, double glazed window to the front.

**Kitchen**

**8,5 \* 7,8 (2.44m,1.52m \* 2.13m,2.44m)**

Double glazed window, work surfaces, laminated flooring, electric hob/ oven, power, extractor hood, sink/single drainer, part tiled walls.

**Bedroom one**

**16,8 \* 8,5 (4.88m,2.44m \* 2.44m,1.52m)**

Carpet flooring, double glazing window to front, power, electric heater

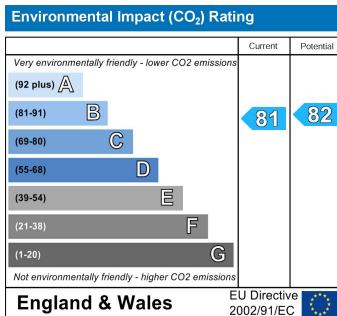
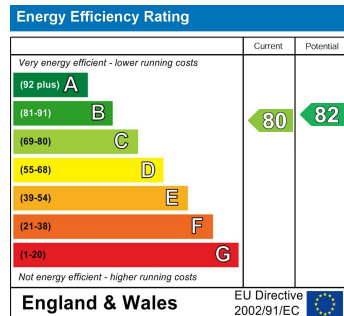
**Bedroom two**

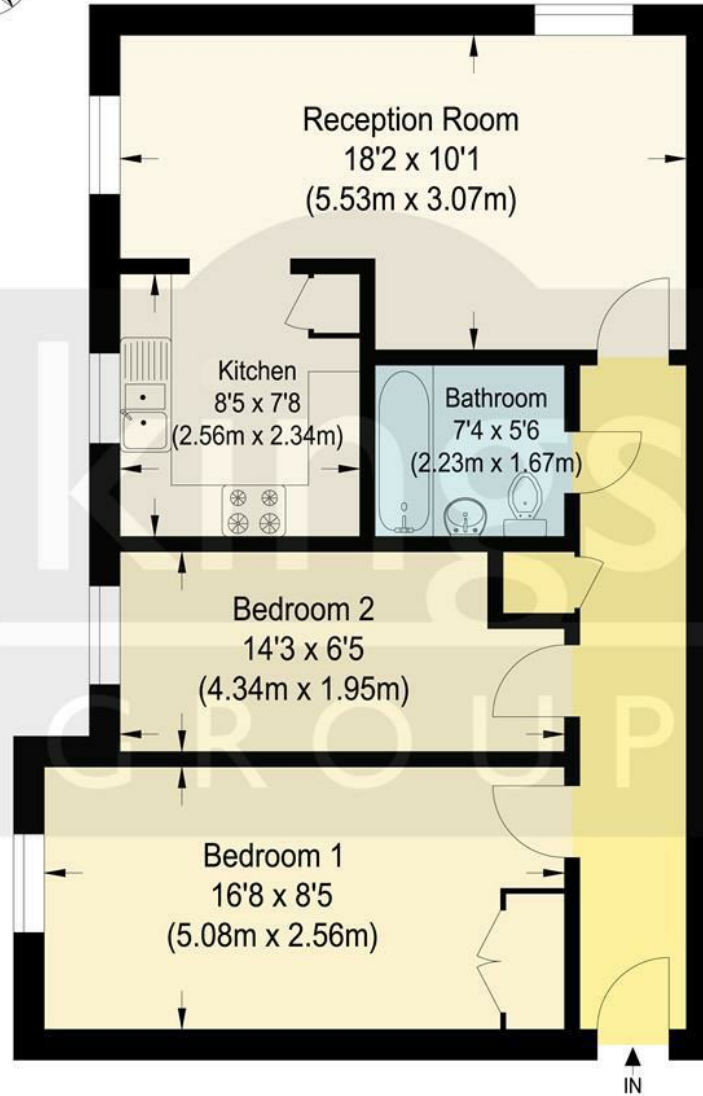
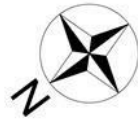
Double glazed window to front, carpet, power, electric heater.

**Bathroom**

**7,4 \* 5,6 (2.13m,1.22m \* 1.52m,1.83m)**

Low level wc, bath with shower attached, wash hand basin.





## First Floor Spectrum House

Approximate Gross Internal Floor Area : 55.50 sq m / 597.39 sq ft  
Illustration for identification purposes only, measurements are approximate, not to scale.



Associated Offices in London, Essex and Hertfordshire  
Kings Head Office Tudor Lodge, Burton Lane, Goffs Oak, Hertfordshire EN7 6SY Tel: 01707-872000



