



**19 George Lovell Drive, Enfield Highway
Offers In Excess Of £500,000 Freehold**



19 George Lovell Drive, Enfield Highway

186 Hertford Road, Enfield Highway,
Middlesex, EN3 5AZ

020 8805 5959
www.kings-group.net

- Situated Within the Sought after Enfield Island Village Location
- Semi Detached House with a Modern Open Plan, Lounge/ Dining Area
- Off Street Parking
- First Floor Bathroom & First Floor En-Suite
- Modern Bedroom with Walk-In Wardrobe
- Offered Chain Free
- Garden Cabin
- Underfloor heating
- EPC Rating C
- Security lights and Alarm System

KINGS GROUP are delighted to offer this IMMACULATE AND STUNNING Three Bedroom SEMI DETACHED House to the market. Offered with NO ONWARD CHAIN and is situated within the sought after Enfield Village and Lee Valley Nature Reserve. Within close proximity to Enfield Lock Station, M25/A10 this has great links into London Liverpool Street, Tottenham Hale and would make an Ideal Family Home. This property has been recently refurbished to an extremely high standard and benefits from a modern lounge/dining area with a fully integrated kitchen boasting from underfloor heating and a swan neck hot water tap system, integrated TV unit with built in electrical fire place, usb electrical sockets, utility room with built in plumbing, fully insulated garden cabin with electrical sockets and a mini bar, outdoors entry walkway lighting, generous size bedrooms with a walk-in-wardrobe and en-suite.

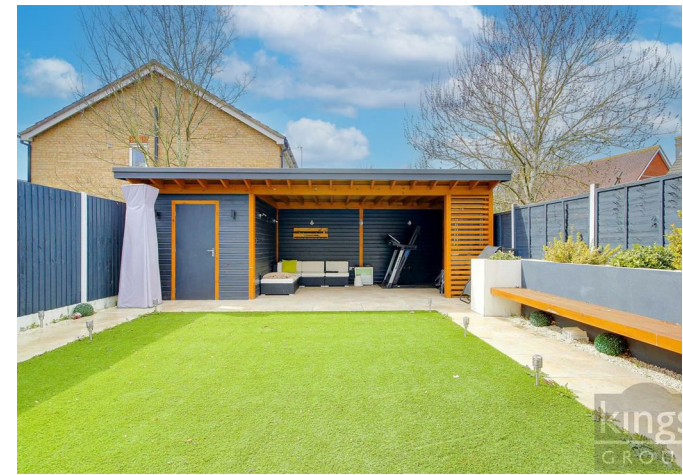
Private Estate Fee - £268 P/A
Council Band F
EPC Rating E



Ground Floor

George Lovell Drive EN3

Approximate Gross Internal Floor Area : 99.0 sq m / 1065.62 sq ft
 (Excluding Storage & Covered Patio)
 Storage & Covered Patio Area : 18.70 sq m / 201.28 sq ft
 Illustration for identification purposes only, measurements are approximate, not to scale.



THE PROPERTY MISDESCRIPTIONS ACT 1991. The agent has not tested any apparatus, equipment, fixtures or services and so cannot verify that they are in working order, or fit for the purpose. References to the Tenure of a property are based on information supplied by the vendor. The agent has not had sight of the Title documents. A buyer is advised to obtain verification from their Solicitor or Surveyor



186 Hertford Road, Enfield Highway,
Middlesex, EN3 5AZ

020 8805 5959

www.kings-group.net



Zoopla.co.uk



rightmove.co.uk
The UK's number one property website

