



Bury Street, N9 7JP
London





Bury Street, N9 7JP

- Kings Are Pleased To Present This
- Two Bedroom Terraced House
- Victorian Build
- Two Reception Rooms
- Downstairs WC
- Large First Floor Bathroom
- 51ft Rear Garden
- Close To Shops & Transport Links
- Chain Free
- Council Tax Band C

£389,995



KINGS are pleased to present this Two Bedroom Terraced House available with NO ONWARD CHAIN. This spacious Victorian built bay fronted property features TWO RECEPTION ROOMS, a good sized kitchen leading on to a DOWNSTAIRS WC, and a LARGE FIRST FLOOR BATHROOM. Further benefits include, gas central heating and a 51FT REAR GARDEN.

Bury Street is just off Hertford Road situated within easy reach of Edmonton Green and it's vast selection of shops, restaurants and leisure facilities, the property also provides easy access to bus routes directly outside and road links such as the A10. We feel this property would suit first time buyers, family movers or investors alike.

Council Tax Band C

Construction Type - Standard (Brick, Tile)

Flood Risk - Rivers & Seas: Low, Surface Water: Low

ENTRANCE HALL

RECEPETION ROOM ONE 13'1 x 105 (3.99m x 32.00m)

RECEPTION ROOM TWO 10'5 x 10'4 (3.18m x 3.15m)

KITCHEN 12'3 x 7'9 (3.73m x 2.36m)

WC 5'5 x 4'2 (1.65m x 1.27m)

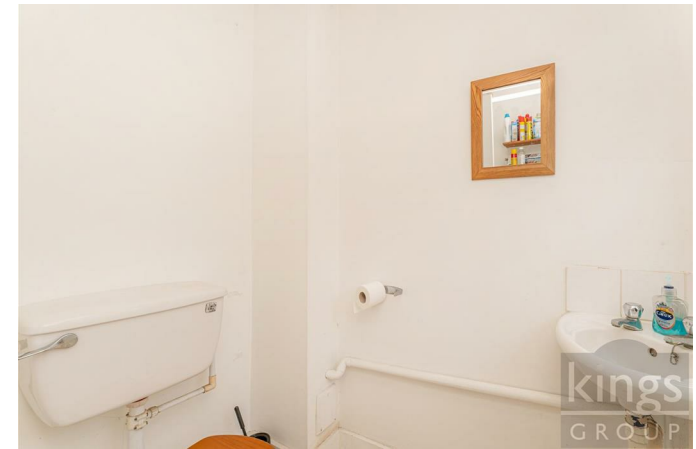
FIRST FLOOR LANDING

BEDROOM ONE 13'7 x 13'2 (4.14m x 4.01m)

BEDROOM TWO 10'6 x 8'4 (3.20m x 2.54m)

BATHROOM 12'3 x 7'9 (3.73m x 2.36m)

GARDEN 51'3 13'3 (15.62m 4.04m)





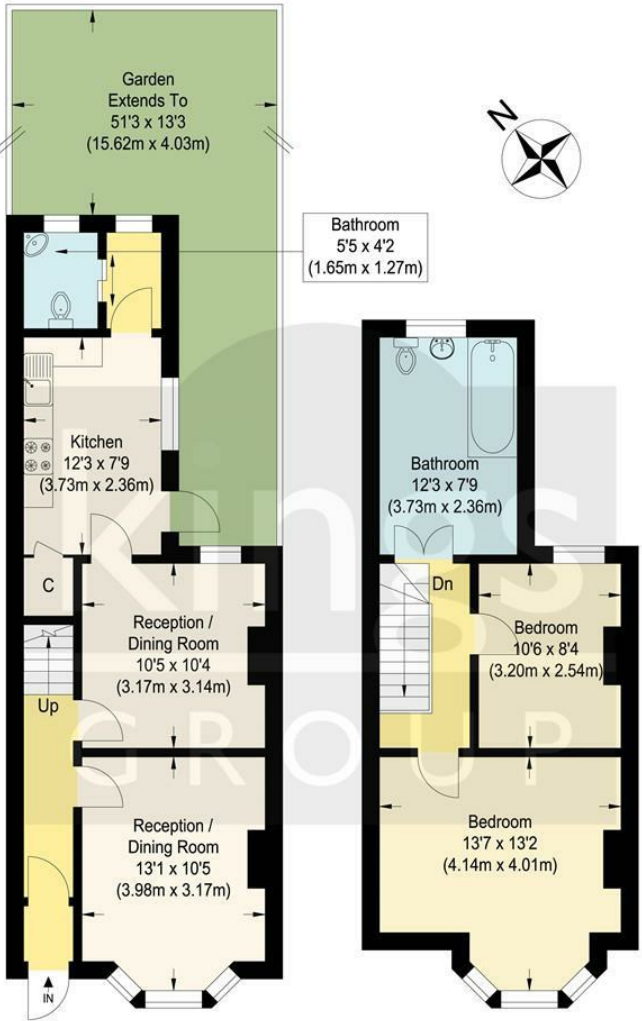
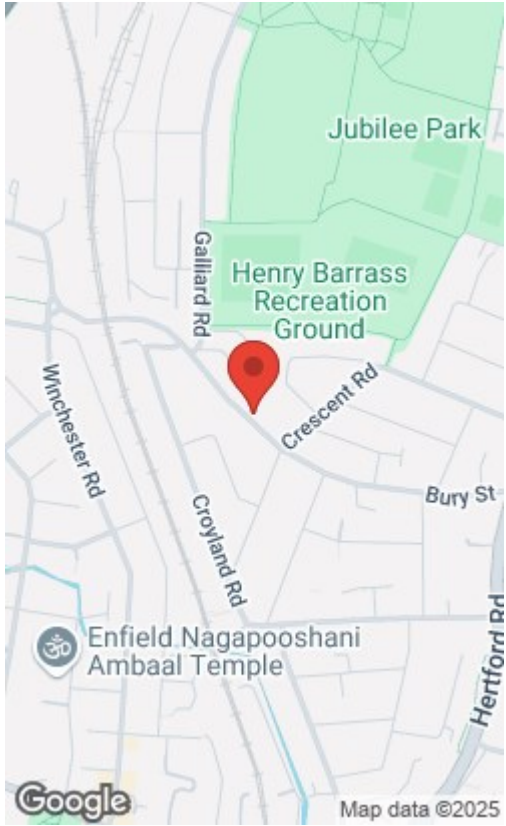
Kings
GROUP



kings
GROUP



Energy Efficiency Rating		
Very energy efficient - lower running costs	Current	Potential
(92 plus) A		87
(81-91) B		
(69-80) C		
(55-68) D	65	
(39-54) E		
(21-38) F		
(1-20) G		
Not energy efficient - higher running costs		
England & Wales		
EU Directive 2002/91/EC		



Ground Floor First Floor

Bury Street

Approximate Gross Internal Floor Area : 79.60 sq m / 856.80 sq ft
Illustration for identification purposes only, measurements are approximate, not to scale.

THE PROPERTY MISDESCRIPTIONS ACT 1991. The agent has not tested any apparatus, equipment, fixtures or services and so cannot verify that they are in working order, or fit for the purpose. References to the Tenure of a property are based on information supplied by the vendor. The agent has not had sight of the Title documents. A buyer is advised to obtain verification from their Solicitor or Surveyor. Note: These details are correct at time of going to press.

6 Church Street, Edmonton, London, N9 9DX

T: 02083500100

E:

www.kings-group.net

