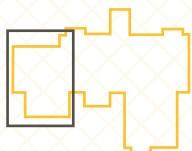


# EATON

## Apartment 9 2 Bedroom, Ground Floor



ENTERPRISE  
RETIREMENT  
LIVING

BOUGHTON  
HALL

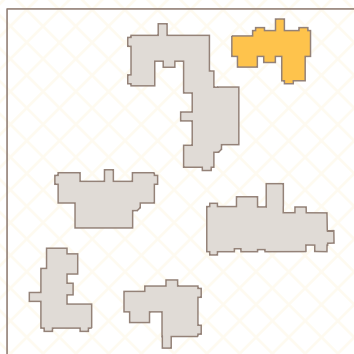


Kitchen	2.24m x 4.45m	7' 5" x 14' 6"
Lounge/Dining	4.75m x 4.63m	15' 7" x 15' 2"
Bedroom 1	3.91m x 4.34m	12' 10"x 14' 3"
Bedroom 2	4.75m x 2.87m	15' 7" x 9' x 5"
<b>Approx gross internal area</b>	<b>85.5 m<sup>2</sup></b>	<b>920 ft<sup>2</sup></b>

Plans are not shown to scale and room dimensions are approximate, given at their maximum and are indicative only. They are not intended to be used for carpet sizes, appliance sizes or items of furniture. Furniture not included.

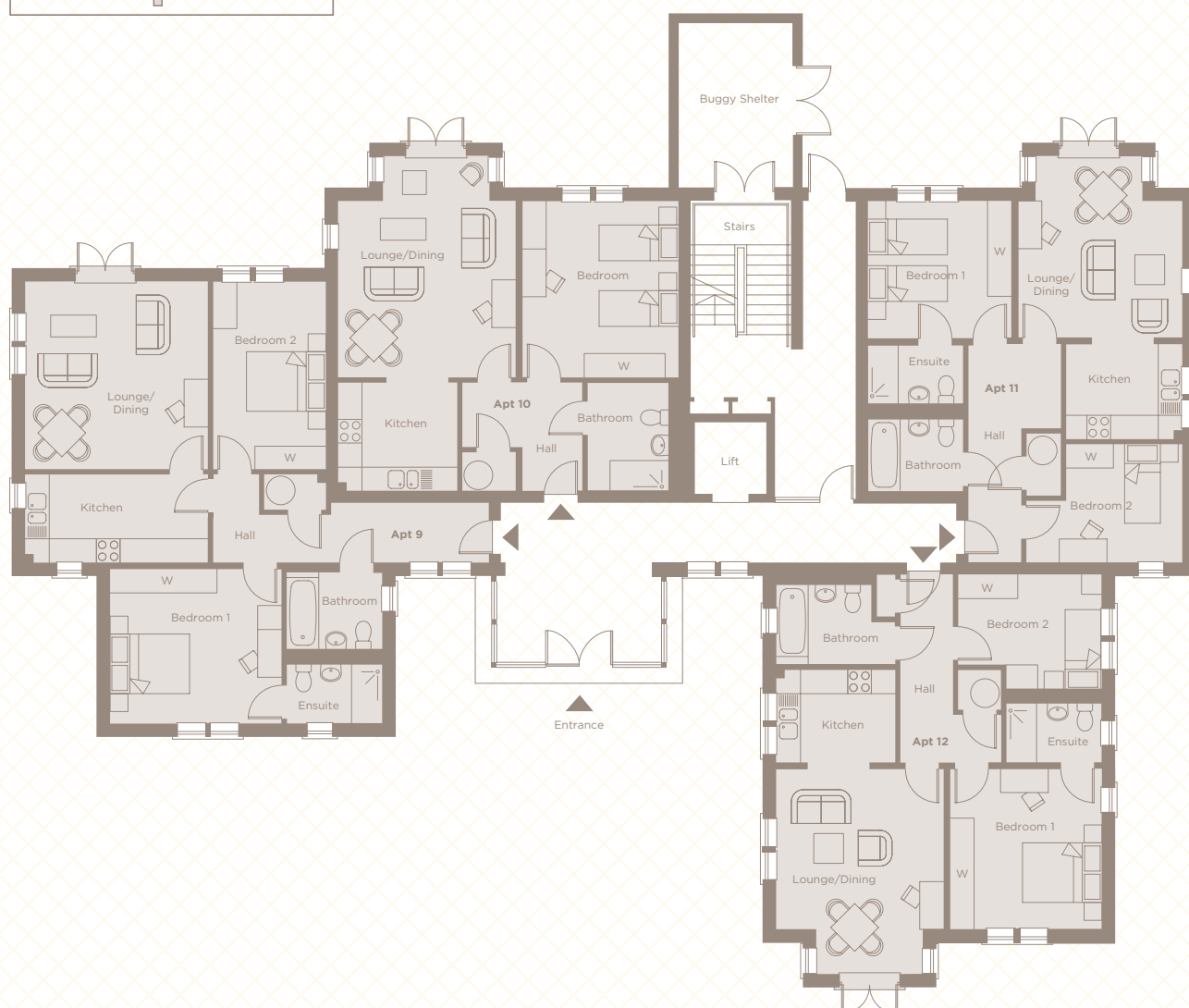
# EATON

## Ground floor



ENTERPRISE  
RETIREMENT  
LIVING

BOUGHTON  
HALL



Plans are not shown to scale and room dimensions are approximate, given at their maximum and are indicative only. They are not intended to be used for carpet sizes, appliance sizes or items of furniture. Furniture not included.

## SITE PLAN

ENTERPRISE  
RETIREMENT  
LIVING

BOUGHTON  
HALL



Whilst we try to be as accurate as possible, room dimensions are maximum and indicative. Layouts are not shown to scale and have been 'handed' in some cases for illustration purposes. Note: All ground floor apartments have patio doors. Plans include indicative furniture layouts and for the avoidance of doubt such furniture is not included within the specification.