

CHANGING HOME



Millbank | Greenfield Street | Rhyl | LL18 4PG

£150,000

Spacious home with vacant possession & no onward chain.

Located at the top of Green field Street, Rhyl, this spacious three bedroom semi detached house is the ideal home for someone looking to get on the housing ladder. Conveniently located within walking distance to the town centre, bus routes, schools and shops,

Property Description

LIVING ROOM

17' 9" x 10' 11" (5.43m x 3.34m) with Radiator and coved ceiling

KITCHEN/BREAKFAST ROOM

14' 6" x 8' 8" (4.43m x 2.65m) Generous kitchen/breakfast room with worksurface with 1 1/2 stainless steel single drainer sink unit, 4 ring gas hob and electric oven beneath, space and plumbing for washing machine and dishwasher, space for fridge freezer, cupboards and drawers, recessed downlighters and door to rear enclosed garden. Door to

CLOAKROOM

Low level WC and wash hand basin

ENTRANCE HALL

with door to living room and stairs up

LANDING

access to roof void and over stairs airing cupboard with gas combi boiler

BEDROOM 1

12' 11" x 8' 4" (3.96m x 2.56m) Radiator door to

EN SUITE

Low level WC wash hand basin and shower cubicle Part tiled walls

BEDROOM 2

10' 0" x 7' 7" (3.06m x 2.33m) radiator

BEDROOM 3

7' 9" x 5' 9" (2.38m x 1.77m) radiator

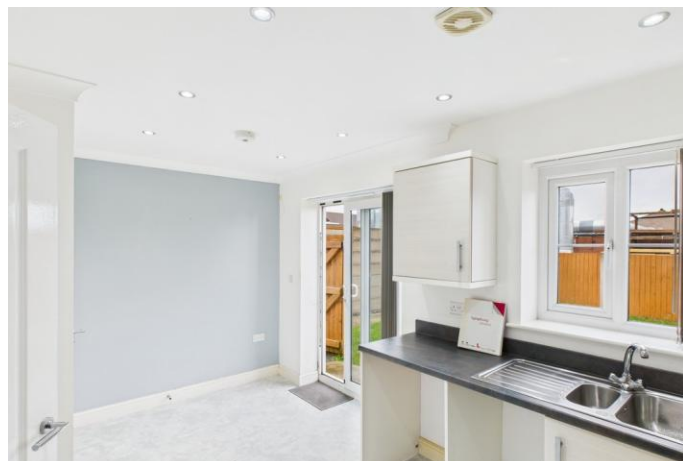
BATHROOM

panelled bath, low level WC, pedestal Basin, part tiled and extractor fan

GARDEN

to the front is a small area of grass and a tarmac driveway for parking. To the rear is an enclosed garden with patio, lawn and timber garden shed.







Tenure

Freehold

Council Tax Band

C

Viewing Arrangements

If you wish to make an appointment to view this or any other property that we have for offer please call us on 01244 345664

Contact Details

40 Lower Bridge Street
Chester
Cheshire
CH1 1RS

www.changing-home.co.uk
jeremy@changing-home.co.uk
01244 345664

| Score | Energy rating | Current | Potential |
|-------|---------------|---------|-----------|
| 92+ | A | | |
| 81-91 | B | 88 B | 88 B |
| 69-80 | C | | |
| 55-68 | D | | |
| 39-54 | E | | |
| 21-38 | F | | |
| 1-20 | G | | |

Agents Note: Whilst every care has been taken to prepare these sales particulars, they are for guidance purposes only. All measurements are approximate are for general guidance purposes only and whilst every care has been taken to ensure their accuracy, they should not be relied upon and potential buyers are advised to recheck the measurements