



Round Hill Meadow | Great Boughton | Chester | CH3 5TU

£390,000

A immaculately presented & fully renovated TWO bedroom bungalow home situated in a quiet cul-de-sac within ever popular Great Boughton. Porch, Hallway, Living room, stunning open plan Kutchenhaus fitted kitchen/diner with bi-folds leading to the large rear garden, two double bedrooms, bathroom & attached single garage. Outside is a superb large rear garden and to the front a lawn area and drive allowing ample parking.

Property Description

LOCATION

The property sits within a small cul-de-sac in the heart of very popular Great Boughton a short walk of Bishops High School (also in catchment for Christleton Schools) and Sainsburys superstore. Chester City Centre is a short drive away and is well served by public transport. Access to the main road network and motorway links M53, M56 & A55 is simple. There are local shops close by in Boughton.

PORCH

5' 3" x 2' 5" (1.62m x 0.75m)

HALL

3' 9" x 11' 3" (1.16m x 3.43m)

LIVING ROOM

14' 5" x 11' 4" (4.40m x 3.46m)

KITCHEN/DINING AREA

18' 0" x 9' 9" (5.50m x 2.98m)

BEDROOM ONE

12' 2" x 8' 3" (3.73m x 2.52m)

BEDROOM TWO

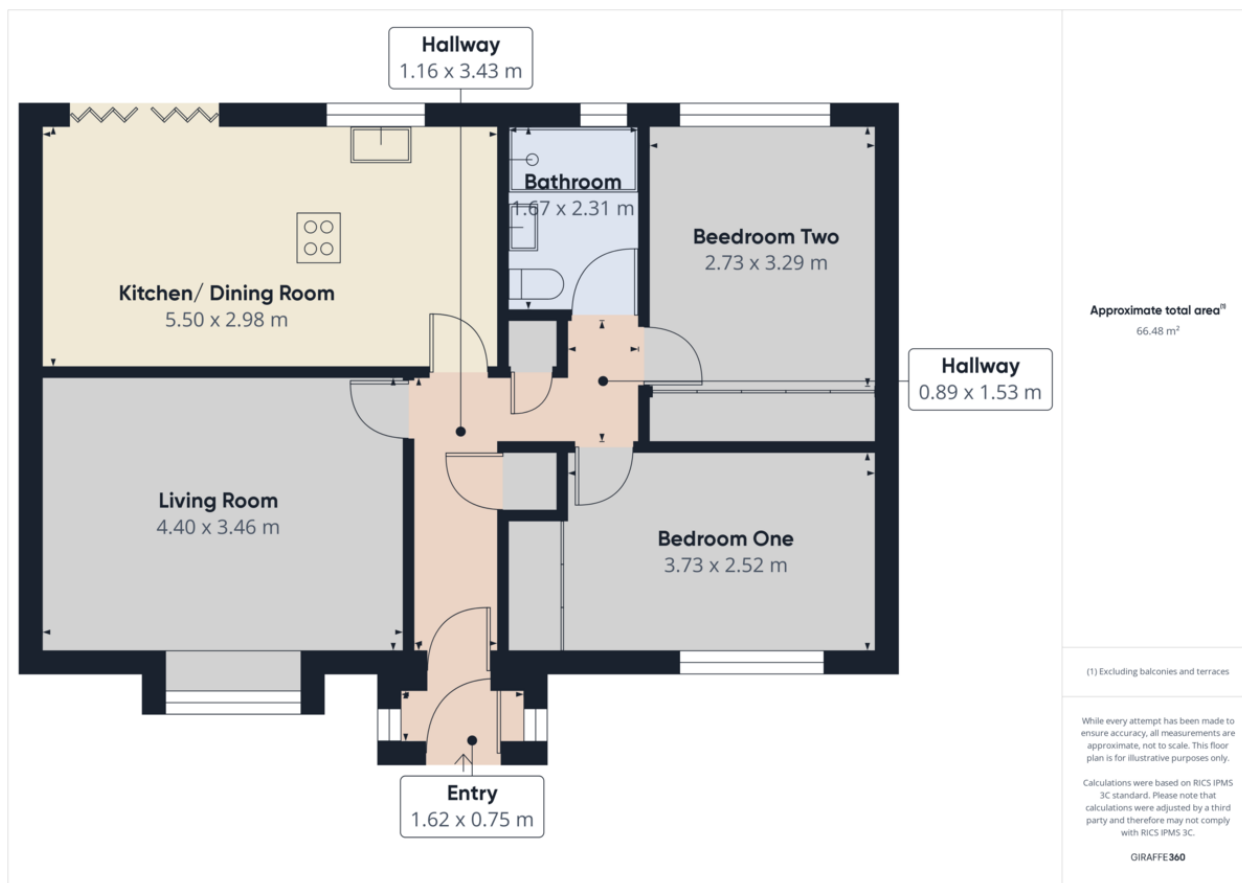
8' 11" x 10' 9" (2.73m x 3.29m)

BATHROOM

5' 5" x 7' 6" (1.67m x 2.31m)







Tenure

Freehold

Council Tax Band

Viewing Arrangements

If you wish to make an appointment to view this or any other property that we have for offer please call us on 01244 345664

Contact Details

40 Lower Bridge Street
Chester
Cheshire
CH1 1RS

www.changing-home.co.uk
jeremy@changing-home.co.uk
01244 345664

Agents Note: Whilst every care has been taken to prepare these sales particulars, they are for guidance purposes only. All measurements are approximate are for general guidance purposes only and whilst every care has been taken to ensure their accuracy, they should not be relied upon and potential buyers are advised to recheck the measurements