

CHANGING HOME



17 Cheyney Road | | Chester | CH1 4BR

£340,000

INVESTMENT OPPORTUNITY. A fully licensed 7 double bedroom terraced HMO set directly opposite the main campus building of Chester University. The property is well appointed and has potential to attract significant rental income. All furniture included. **NO ONWARD CHAIN.** Early viewing advised.

Property Description

LOCATION

The property is set directly opposite the main campus building for Chester University. The City Centre is within walking distance. There are local shops and pubs very close at hand.

PORCH

With a tiled floor.

HALL

With a tiled floor and radiator.

BEDROOM 1

12' 1" x 12' 2" (3.68m x 3.71m) plus bay. With radiator, wash hand basin and UPVC double glazed bay window.

BEDROOM 2

11' 5" x 9' 4" (3.48m x 2.84m) With radiator, wash hand basin and UPVC double glazed window.

LIVING ROOM

11' 5" x 11' 1" (3.48m x 3.38m) With a UPVC double glazed window, radiator and tiled floor.

KITCHEN

14' 0" x 9' 0" (4.27m x 2.74m) With an extensive range of fitted floor and wall units. 2 stainless steel sink units. 2 ovens. 2 four ring gas hobs with extractor fans over. Tiled floor and partly tiled walls. UPVC double glazed window.

REAR HALL

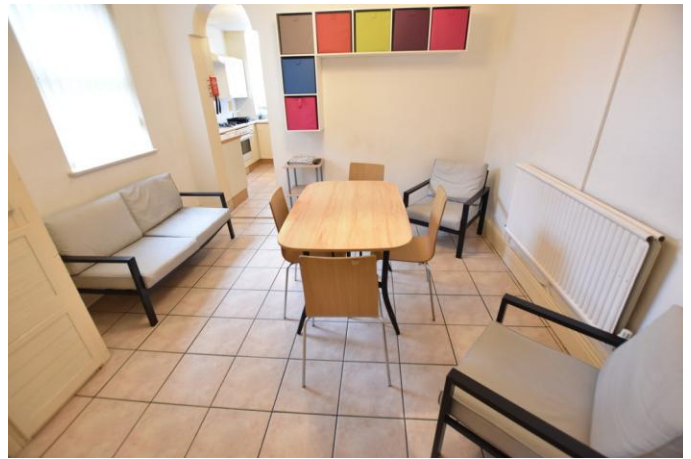
With tiled floor and UPVC door to the rear.

SHOWER ROOM

With WC, wash hand basin and tiled shower cubicle. Radiator and frosted UPVC double glazed window. Tiled floor.

BEDROOM 3

12' 0" x 11' 3" (3.66m x 3.43m) With wash hand basin, radiator and UPVC double glazed window.



BEDROOM 4

11' 7" x 10' 8" (3.53m x 3.25m) With wash hand basin, radiator and UPVC double glazed window.

BEDROOM 5

11' 1" x 8' 6" (3.38m x 2.59m) With radiator and UPVC double glazed window.

BATHROOM

10' 5" x 6' 1" (3.18m x 1.85m) With a white suite of a WC, wash hand basin, paneled bath and shower. Partly tiled walls and tiled floor. Frosted UPVC double glazed window and radiator.

BEDROOM 6

12' 3" x 13' 0" (3.73m x 3.96m) with restricted headroom. Accessed via a door and fixed staircase. With 2 radiators and Velux window.

BEDROOM 7

11' 4" x 10' 11" (3.45m x 3.33m) with some restricted headroom. Accessed via a door and fixed staircase. With Velux window, radiator and store area.

OUTSIDE

There is a paved garden to the rear with gate at the back.





for illustration only not to scale
Plan produced using PlanUp.

Tenure

Freehold

Council Tax Band

C

Viewing Arrangements

If you wish to make an appointment to view this or any other property that we have for offer please call us on 01244 345664

Contact Details

40 Lower Bridge Street
Chester
Cheshire
CH1 1RS

www.changing-home.co.uk
jeremy@changing-home.co.uk
01244 345664

%epcGraph_c_1_349%

Agents Note: Whilst every care has been taken to prepare these sales particulars, they are for guidance purposes only. All measurements are approximate are for general guidance purposes only and whilst every care has been taken to ensure their accuracy, they should not be relied upon and potential buyers are advised to recheck the measurements