



## A SEVEN BEDROOM FAMILY HOME IN A GATED DEVELOPMENT

Wildacres, Northwood, Middlesex HA6 3JD

**ROBSONS**

# A SEVEN BEDROOM FAMILY HOME IN A GATED DEVELOPMENT

Wildacres, Northwood, Middlesex HA6 3JD

**LOUNGE • DINING ROOM • STUDY • MODERN KITCHEN WITH ORANGERY • UTILITY ROOM • GROUND FLOOR BEDROOM WITH ENSUITE • PRINCIPAL BEDROOM WITH DRESSING ROOM AND ENSUITE • FIVE FURTHER BEDROOMS • FOUR FURTHER BATHROOMS • MATURE SECLUDED GARDEN • DETACHED DOUBLE GARAGE + INTEGRAL DOUBLE GARAGE • OFF STREET PARKING •**

## Description

A seven bedroom, six bathroom detached residence, ideally positioned within a prestigious gated development in Northwood. Offering 4402 sqft of accommodation over three well-appointed levels, this stunning family home has been continuously upgraded by the current owners creating a spacious and versatile floorplan suitable for multi-generational living.

The ground floor comprises an entrance hall with central staircase and guest cloakroom, study, lounge, dining room, bedroom with ensuite, utility room and a beautiful modern kitchen, which opens through to an orangery with a delightful feature of a sunken spiral wine cellar.





To the first floor, a spacious landing gives access to the principal bedroom with fitted dressing room and luxurious ensuite shower room with walk-in shower cubicle, his & hers basins, wc and a steam room. There are four further double bedrooms, two of which have ensuites, plus there is a separate family bathroom. Continuing up to the second floor there is a seventh double bedroom with separate steam/shower room and a laundry room.

The secluded side and rear gardens offer complete privacy whilst relaxing or entertaining. There is a paved patio seating area, with attractive lawn, mature flowerbeds and irrigation system, plus three storage sheds.

To the front of the house is a high quality detached double garage, an additional integral double garage, plus further parking for three vehicles.

### Location

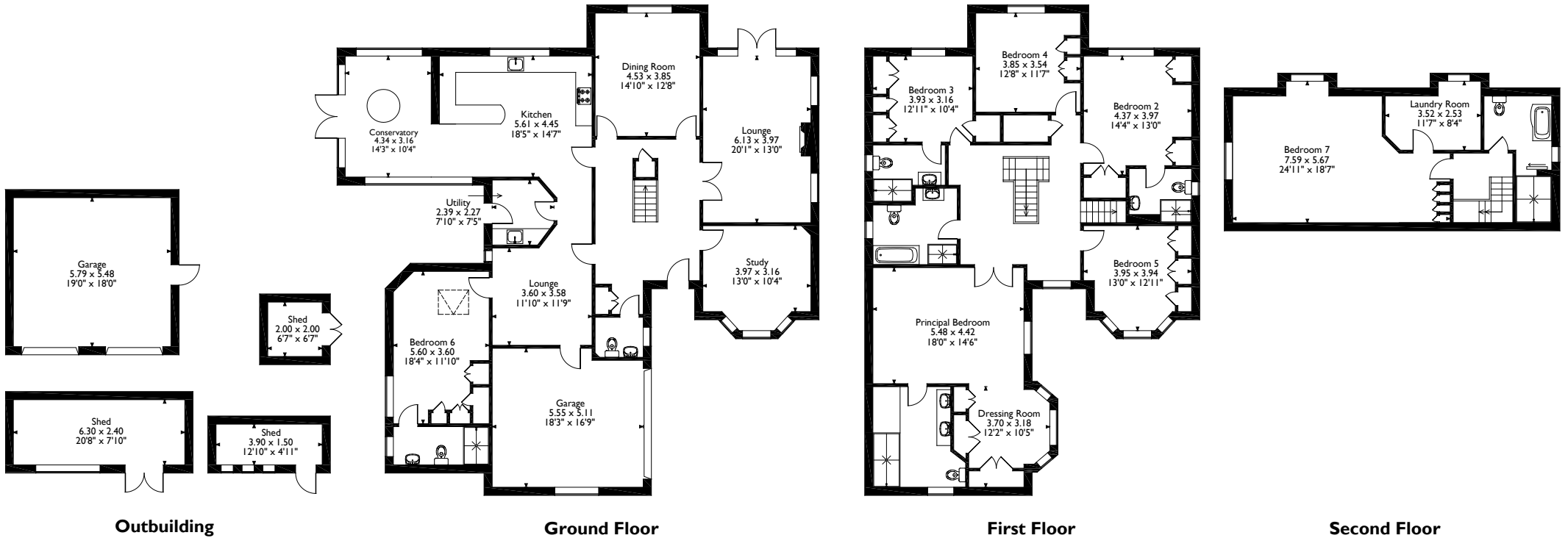
Wildacres comprises of six luxury houses on the favoured Hertfordshire side of Northwood. The property is within reach of Moor Park or Northwood stations where the Metropolitan Line provides access to Baker Street and The City beyond. Northwood Town Centre has Waitrose supermarket, coffee shops and numerous eateries. There are also well regarded private and state schools in the area. Major motorways links and airports are also accessible.

### Additional Information

Tenure: Freehold      Local Authority: Three Rivers District  
Council Tax: Band H      Energy Efficiency Rating: Band



Wildacres, Northwood  
 Approximate Gross Internal Area  
 Main House = 409 Sq M/4402 Sq Ft  
 Garage = 32 Sq M/344 Sq Ft  
 Outbuildings = 25 Sq M/269 Sq Ft  
 Total = 466 Sq M/5015 Sq Ft



Please note that the location of doors, windows and other items are approximate and this floorplan is to be used for illustrative purposes only. Unauthorized reproduction is prohibited.



The Estate Office, North Approach, Moor Park, Middlesex HA6 2QJ  
 Tel: 01923 835355 moorpark@robsonswb.com  
[www.robsonswb.com](http://www.robsonswb.com)

Important notice: Robsons, their clients and any joint agents give notice that 1: They are not authorised to make or give any representations or warranties in relation to the property either here or elsewhere, either on their own behalf or on behalf of their client or otherwise. They assume no responsibility for any statement that may be made in these particulars. These particulars do not form part of any offer or contract and must not be relied upon as statements or representations of fact. 2: Any areas, measurements or distances are approximate. Plot sizes and dimensions are taken from Promap and are approximate. The text, photographs and plans are for guidance only and are not necessarily comprehensive. It should not be assumed that the property has all necessary planning, building regulation or other consents and Robsons have not tested any services, equipment or facilities. Purchasers must satisfy themselves by inspection or otherwise.