



A 7 BEDROOM, 7 BATHROOM HOME IN A SOUGHT AFTER LOCATION

Main Avenue, Moor Park, Northwood, Middlesex HA6 2LH

ROBSONS

A 7 BEDROOM, 7 BATHROOM HOME IN A SOUGHT AFTER LOCATION

Main Avenue, Moor Park, Northwood, Middlesex
HA6 2LH

**THREE RECEPTION ROOMS • KITCHEN/
BREAKFAST ROOM • CLOAKROOM • FIRST
FLOOR 5 BEDROOMS WITH ENSUITE FACILITIES
- TWO WITH DRESSING ROOMS • SECOND
FLOOR - TWO BEDROOMS WITH ENSUITE
FACILITIES & LOUNGE AREA • SECLUDED
REAR GARDEN IN EXCESS OF 147' • INTEGRAL
GARAGE • DRIVEWAY WITH OFF STREET
PARKING FOR SEVERAL VEHICLES**

Description

An imposing 7 bedroom, 7 bathroom detached family home, occupying a half acre plot in the prestigious Moor Park Estate. Offering nearly 6400 sqft of accommodation over three well-appointed levels, the ground floor comprises a welcoming entrance hall with guest cloakroom, a spacious lounge, formal dining room and a TV room with internal door to garage. The spacious kitchen is fitted with a range of Oak Shaker style cabinets providing ample storage space with granite worktops over, integrated appliances and a central island feature with seating. To the first floor are five generously sized bedrooms, all with modern ensuite facilities,





Description

two are further complimented with dressing rooms. On the second floor are two further spacious bedrooms, both with modern ensuite facilities, plus with a lounge/TV area. The secluded, south facing rear garden extends to approximately 147 feet in length and is mainly laid to lawn with a variety of trees, mature shrubs and flowerbed borders, and a large patio area for outside entertaining. The attractive landscaped frontage has a large block paved driveway providing parking for several vehicles and access to the integral garage.

Location

Main Avenue forms part of the 294 acres of the Moor Park Private Gated Estate, bordering Middlesex and Hertfordshire, surrounded by rolling countryside and two championship golf courses. The property is conveniently located and being within walking distance for Moor Park shops, restaurants and the Metropolitan Line train station. Northwood and Rickmansworth town centres are also accessible and offer a further wide range of shops and restaurants. The local area is well served for state and private schools, which includes Merchant Taylors' Junior and Senior Schools, which are both on the estate. Major motorways and airports are also within reach. This property falls within the Moor Park Conservation Area.

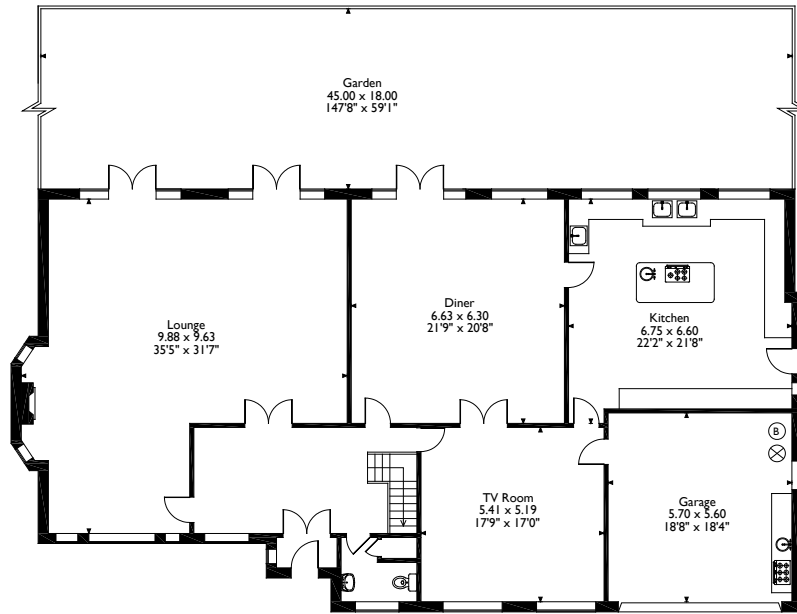
Additional Information

Local Authority: three Rivers District Council

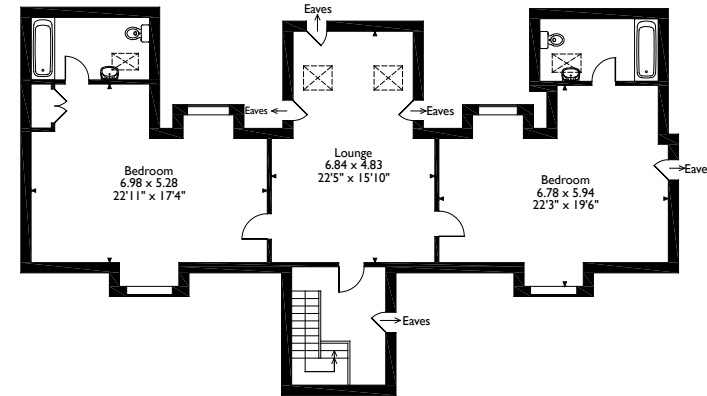
Energy Efficiency Rating: Band E



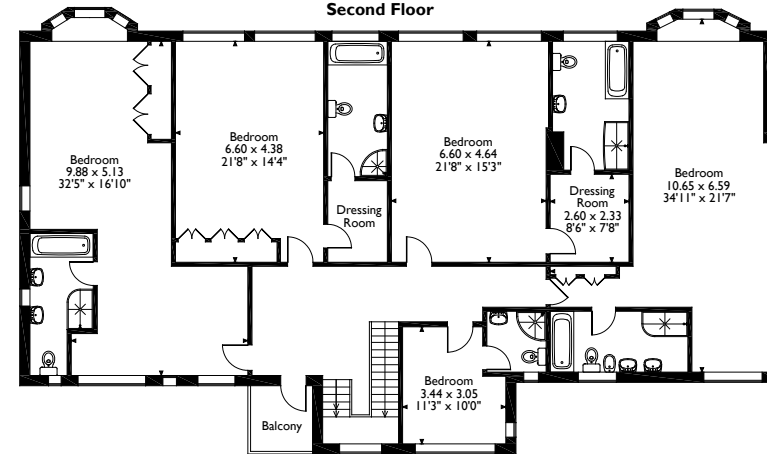
Main Avenue, Northwood
 Approximate Gross Internal Area
 594 Sq M/6394 Sq Ft



Ground Floor



Second Floor



First Floor

Please note that the location of doors, windows and other items are approximate and this floorplan is to be used for illustrative purposes only. Unauthorized reproduction is prohibited.



The Estate Office, North Approach, Moor Park HA6 2JQ
 Tel: 01923 820622 moorpark@robsonswb.com
www.robsonswb.com



Important notice: Robsons, their clients and any joint agents give notice that 1: They are not authorised to make or give any representations or warranties in relation to the property either here or elsewhere, either on their own behalf or on behalf of their client or otherwise. They assume no responsibility for any statement that may be made in these particulars. These particulars do not form part of any offer or contract and must not be relied upon as statements or representations of fact. 2: Any areas, measurements or distances are approximate. Plot sizes and dimensions are taken from Promap and are approximate. The text, photographs and plans are for guidance only and are not necessarily comprehensive. It should not be assumed that the property has all necessary planning, building regulation or other consents and Robsons have not tested any services, equipment or facilities. Purchasers must satisfy themselves by inspection or otherwise.